

Texas Prior Authorization Program Clinical Edit Criteria

Drug/Drug Class

Carisoprodol

Clinical Edit Information Included in this Document

Carisoprodol (Compounds)

- **Drugs requiring prior authorization:** the list of drugs requiring prior authorization for this clinical edit
- **Prior authorization criteria logic:** a description of how the prior authorization request will be evaluated against the clinical edit criteria rules
- **Logic diagram:** a visual depiction of the clinical edit criteria logic
- **Supporting tables:** a collection of information associated with the steps within the criteria (diagnosis codes, procedure codes, and therapy codes); provided when applicable
- **References:** clinical publications and sources relevant to this clinical edit

Carisoprodol (Excluding Compounds)

- **Drugs requiring prior authorization:** the list of drugs requiring prior authorization for this clinical edit
- **Prior authorization criteria logic:** a description of how the prior authorization request will be evaluated against the clinical edit criteria rules
- **Logic diagram:** a visual depiction of the clinical edit criteria logic
- **Supporting tables:** a collection of information associated with the steps within the criteria (diagnosis codes, procedure codes, and therapy codes); provided when applicable
- **References:** clinical publications and sources relevant to this clinical edit

Note: Click the hyperlink to navigate directly to that section.

Revision Notes

- Divided clinical edit criteria guide into Carisoprodol (Compounds) and Carisoprodol (Excluding Compounds)
- Added a new section to specify the drugs requiring prior authorization for each form of carisoprodol
- In each "Clinical Edit Supporting Tables" section, revised table to specify the drug names and GCNs pertinent to step 2 of the logic diagram



Carisoprodol Compounds

Drugs Requiring Prior Authorization

Drugs Requiring Prior Authorization	
Label Name	GCN
CARISOPRODOL-ASPIRIN 200-325 MG	94380
CARISOPRODOL COMPOUND TAB	94380
CARISOPRODOL CPD-CODEINE TAB	13995



**Carisoprodol
Compounds**
Clinical Edit Criteria Logic

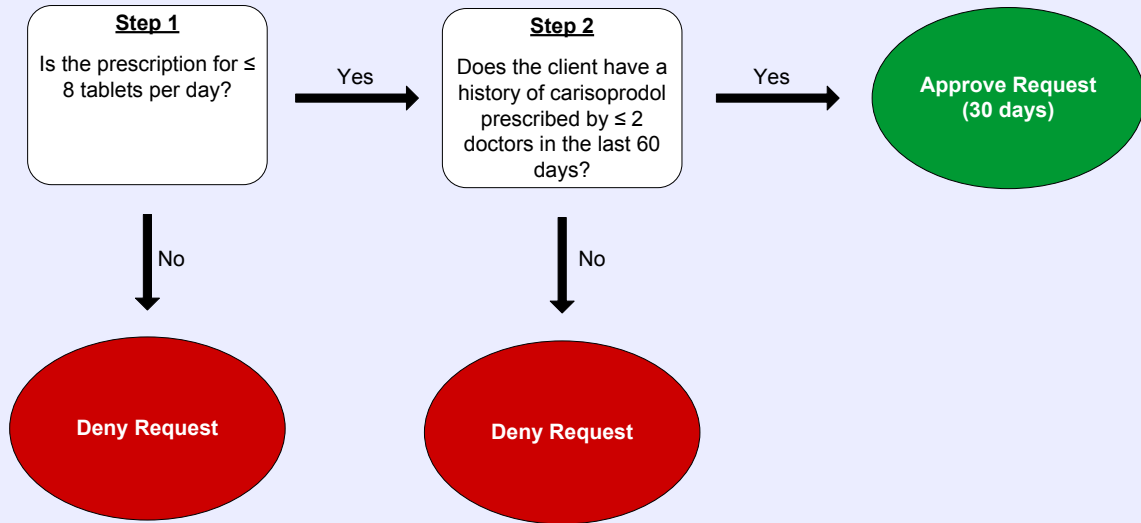
1. Is the prescription for less than or equal to (\leq) 8 tablets per day?
 Yes (Go to #2)
 No (Deny)

2. Does the client have a history of carisoprodol prescribed by less than or equal to (\leq) 2 doctors in the last 60 days?
 Yes (Approve – 30 days)
 No (Deny)



Carisoprodol Compounds

Clinical Edit Criteria Logic Diagram





Carisoprodol Compounds

Clinical Edit Criteria Supporting Tables

Step 2 (history of carisoprodol prescribed by \leq 2 doctors)	
Required quantity: 1	
Look back timeframe: 60 days	
Label Name	GCN
CARISOPRODOL-ASPIRIN 200-325 MG	94380
CARISOPRODOL 250 MG TABLET	98857
CARISOPRODOL 350 MG TABLET	17912
CARISOPRODOL COMPOUND TAB	94380
CARISOPRODOL CPD-CODEINE TAB	13995
SOMA 250 MG TABLET	98857
SOMA 350 MG TABLET	17912



**Carisoprodol
Excluding Compounds
Drugs Requiring Prior Authorization**

Drugs Requiring Prior Authorization	
Label Name	GCN
CARISOPRODOL 250 MG TABLET	98857
CARISOPRODOL 350 MG TABLET	17912
SOMA 250 MG TABLET	98857
SOMA 350 MG TABLET	17912



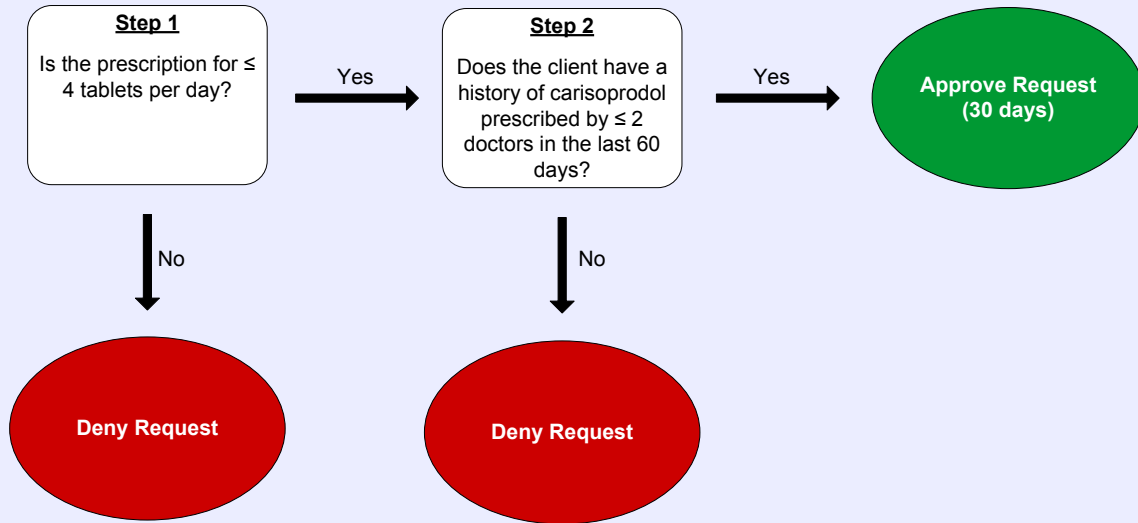
**Carisoprodol
Excluding Compounds
Clinical Edit Criteria Logic**

1. Is the prescription for less than or equal to (\leq) 4 tablets per day?
 Yes (Go to #2)
 No (Deny)

2. Does the client have a history of carisoprodol prescribed by less than or equal to (\leq) 2 doctors in the last 60 days?
 Yes (Approve – 30 days)
 No (Deny)



Carisoprodol Excluding Compounds Clinical Edit Criteria Logic Diagram





Carisoprodol
Excluding Compounds
 Clinical Edit Criteria Supporting Tables

Step 2 (history of carisoprodol prescribed by \leq 2 doctors)	
Required quantity: 1	
Look back timeframe: 60 days	
Label Name	GCN
CARISOPRODOL-ASPIRIN 200-325 MG	94380
CARISOPRODOL 250 MG TABLET	98857
CARISOPRODOL 350 MG TABLET	17912
CARISOPRODOL COMPOUND TAB	94380
CARISOPRODOL CPD-CODEINE TAB	13995
SOMA 250 MG TABLET	98857
SOMA 350 MG TABLET	17912



Carisoprodol

Clinical Edit Criteria References

1. Clinical pharmacology: Carisoprodol monograph. Mar. 30, 2005.
2. Bailey DN, Briggs JR. Carisoprodol: An unrecognized drug of abuse. *Am J Clin Pathol* 2002; 117(3):396-400.
3. Reeves RR, Liberto V. Abuse of combinations of carisoprodol and tramadol. *S Med J* 2001; 94(5):512-4.

Publication History

The Publication History records the publication iterations and revisions to this document. Notes for the *most current revision* are also provided in the **Revision Notes** on the first page of this document.

Publication Date	Notes
01/31/2011	Initial publication and posting to website
03/05/2012	<ul style="list-style-type: none">• Divided clinical edit criteria guide into Carisoprodol (Compounds) and Carisprodol (Excluding Compounds)• Added a new section to specify the drugs requiring prior authorization for each form of carisoprodol• In each "Clinical Edit Supporting Tables" section, revised table to specify the drug names and GCNs pertinent to step 2 of the logic diagram