

**Texas Prior Authorization Program
Clinical Edit Criteria**

Drug/Drug Class**Drug Regimen Optimization****Clinical Edit Information Included in this Document****Excluding Valsartan / Ramipril**

- **Prior authorization criteria logic:** a description of how the prior authorization request will be evaluated against the clinical edit criteria rules
- **Logic diagram:** a visual depiction of the clinical edit criteria logic
- **Supporting tables:** a collection of information associated with the steps within the criteria (diagnosis codes, procedure codes, and therapy codes); provided when applicable
- **References:** clinical publications and sources relevant to this clinical edit

Valsartan / Ramipril

- **Prior authorization criteria logic:** a description of how the prior authorization request will be evaluated against the clinical edit criteria rules
- **Logic diagram:** a visual depiction of the clinical edit criteria logic
- **Supporting tables:** a collection of information associated with the steps within the criteria (diagnosis codes, procedure codes, and therapy codes); provided when applicable
- **References:** clinical publications and sources relevant to this clinical edit

Note: Click the hyperlink to navigate directly to that section.

Revision Notes

Removed sitagliptin from DRO edit, per client request



**Drug Regimen Optimization
Excluding Valsartan / Ramipril
Clinical Edit Criteria Logic**

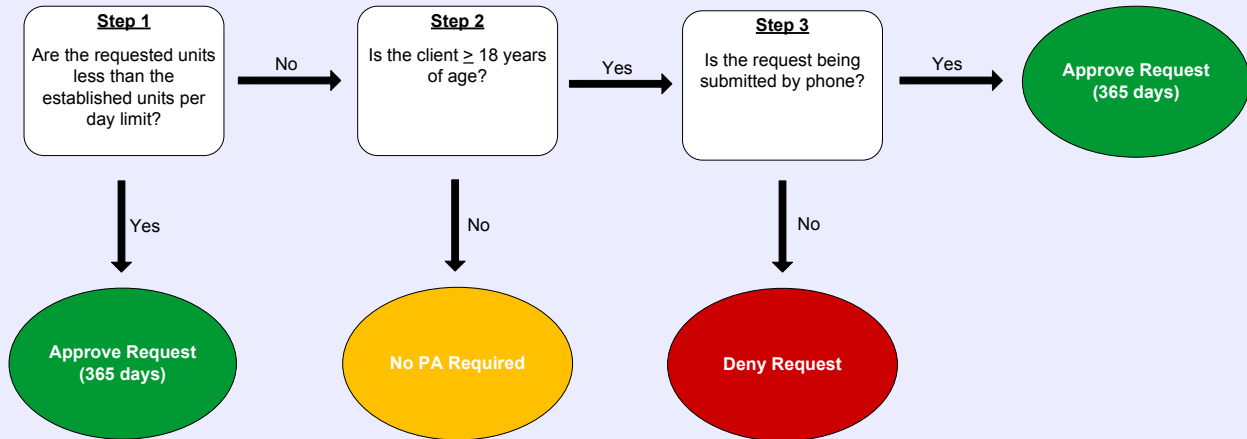
1. Are the requested units less than the established units per day limit?
 Yes (Approve – 365 days)
 No (Go to #2)

2. Is the client greater than or equal to (\geq) 18 years of age?
 Yes (Go to #3)
 No (No PA Required)

3. Is the request being submitted by phone?
 Yes (Approve – 365 days)
 No (Deny)



Drug Regimen Optimization Excluding Valsartan/Ramipril Clinical Edit Criteria Logic Diagram





Drug Regimen Optimization Excluding Valsartan/Ramipril Clinical Edit Criteria Supporting Tables

Drug	Strength	Units per Day
Alpha Blockers		
Doxazosin	1mg, 2mg, 4mg	2
Terazosin	1mg, 5mg	2
Angiotensin Converting Enzyme Inhibitors		
Fosinopril	10mg, 20mg	2
Perindopril	2mg, 4mg	2
Ramipril	1.25mg, 2.5mg, 5mg	2
Trandolapril	1mg, 2mg	2
Angiotensin II Receptor Blockers		
Candesartan	4mg, 8mg, 16mg	2
Irbesartan	75mg, 150mg	2
Losartan	25mg, 50mg	2
Losartan/HCTZ	50/12.5mg	2
Olmesartan	20mg	2
Telmisartan	20mg, 40mg	2
Valsartan	80mg, 160mg	2
Antipsychotics		
Aripiprazole	5mg, 10mg, 15mg	2
Olanzapine	2.5mg, 5mg, 7.5mg, 10mg	2
Olanzapine ODT	5mg, 10mg	2
Risperidone	0.25mg, 0.5mg, 1mg, 2mg	2
Risperidone microsphere injection	25mg	0.072
Risperidone ODT	0.5mg, 1mg, 2mg	2
GU Anticholinergics		
Darifenacin	7.5mg	2
Oxybutynin (includes generic and Ditropan XL®)	5mg	2
Solifenacin	5mg	2
Tolterodine LA	2mg	2
Miscellaneous Agents		
Carvedilol CR	10mg, 20mg, 40mg	2
Cetirizine	5mg	2
Divalproex (Depakote ER®)	250mg	2
Donepezil	5mg	2
Donepezil ODT	5mg	2

Drug	Strength	Units per Day
Galantamine	8mg	2
Glipizide XL (includes generic, Glucotrol XL [®])	2.5mg, 5mg	2
Meloxicam (includes generic and Mobic [®])	7.5mg	2
Niacin SA	500mg	2
Miscellaneous Antidepressants		
Bupropion XL	150mg	2
Mirtazapine (includes generic and Remeron [®])	7.5mg, 15mg	2
Mirtazapine ODT (includes generic and Remeron [®] soltabs)	15mg	2
Venlafaxine XR	37.5mg, 75mg	2
HMG CoA Reductase Inhibitors		
Atorvastatin	10mg, 20mg, 40mg	2
Fluvastatin	20mg, 40mg	2
Lovastatin IR/SR (includes generic, Mevacor [®] , and Altoprev [®])	10mg, 20mg	2
Pravastatin	10mg, 20mg, 40mg	2
Rosuvastatin	5mg, 10mg, 20mg	2
Simvastatin	5mg, 10mg, 20mg, 40mg	2
Calcium Channel Blockers		
Amlodipine	2.5mg, 5mg	2
Felodipine	2.5mg, 5mg	2
Nifedipine SR (includes Procardia XL [®] and Adalat CC [®])	30mg	2
Nisoldipine	10mg, 20mg	2
Verapamil 24hr SR	100mg	2
Proton Pump Inhibitors		
Esomeprazole	20mg	2
Lansoprazole	15mg	2
Omeprazole	10mg, 20mg	2
Pantoprazole	20mg	2
SSRI Agents		
Citalopram	10mg, 20mg	2
Escitalopram	5mg, 10mg	2
Paroxetine	10mg, 12.5mg, 20mg	2
Sertraline	25mg, 50mg	2
Stimulants		
Amphetamine/ Dextroamphetamine XL	5mg, 10mg, 15mg	2
Dexmethylphenidate XR	5mg, 10mg	2
Dextroamphetamine SR	5mg	2
Methylphenidate ER capsules	10mg, 20mg	2

Drug	Strength	Units per Day
Methylphenidate ER tablets	10mg, 18mg, 27mg	2
Methylphenidate patch	10mg, 15mg	2



Drug Regimen Optimization
Valsartan / Ramipril
Clinical Edit Criteria Logic

1. Are the requested units less than the established units per day limit?
 Yes (Approve - 365 days)
 No (Go to #2)

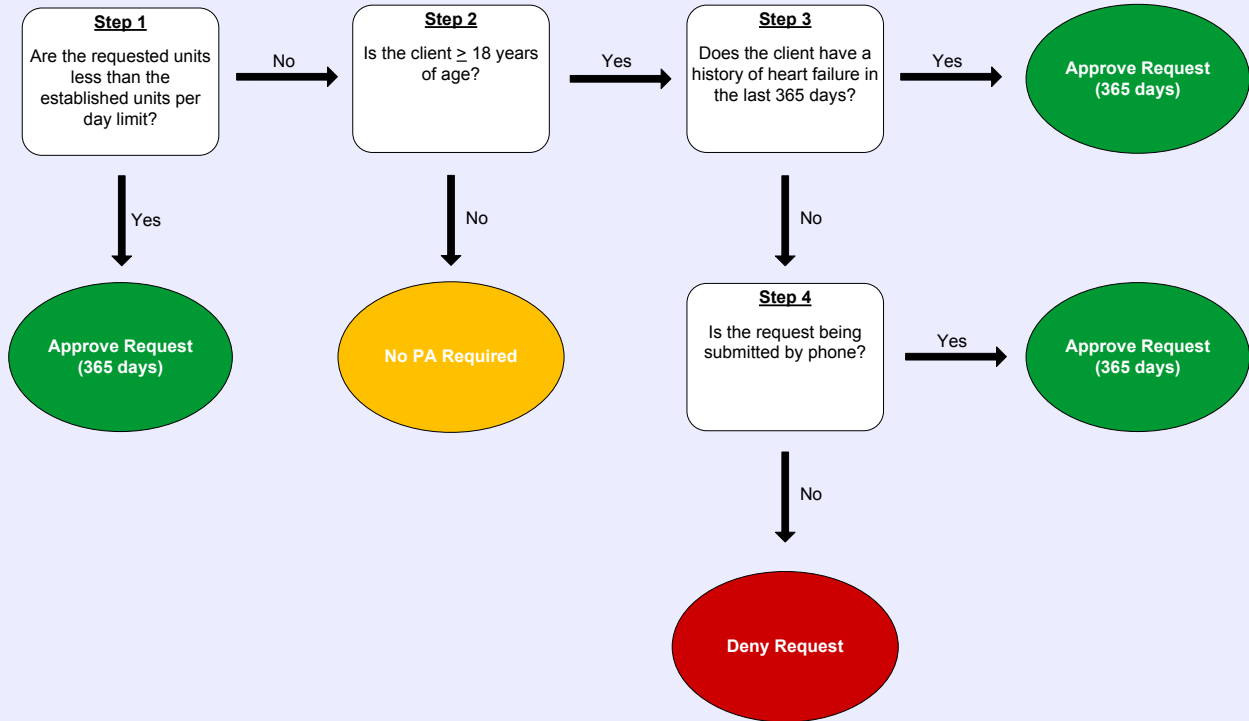
2. Is the client greater than or equal to (\geq) 18 years of age?
 Yes (Go to #3)
 No (No PA Required)

3. Does the client have a history of heart failure in the last 365 days?
 Yes (Approve - 365 days)
 No (Go to #4)

4. Is the request being submitted by phone?
 Yes (Approve - 365 days)
 No (Deny)



Drug Regimen Optimization Valsartan/Ramipril Clinical Edit Criteria Logic Diagram





Drug Regimen Optimization Valsartan/Ramipril

Clinical Edit Criteria Supporting Tables

Drug	Strength	Units per Day
Alpha Blockers		
Doxazosin	1mg, 2mg, 4mg	2
Terazosin	1mg, 5mg	2
Angiotensin Converting Enzyme Inhibitors		
Fosinopril	10mg, 20mg	2
Perindopril	2mg, 4mg	2
Ramipril	1.25mg, 2.5mg, 5mg	2
Trandolapril	1mg, 2mg	2
Angiotensin II Receptor Blockers		
Candesartan	4mg, 8mg, 16mg	2
Irbesartan	75mg, 150mg	2
Losartan	25mg, 50mg	2
Losartan/HCTZ	50/12.5mg	2
Olmesartan	20mg	2
Telmisartan	20mg, 40mg	2
Valsartan	80mg, 160mg	2
Antipsychotics		
Aripiprazole	5mg, 10mg, 15mg	2
Olanzapine	2.5mg, 5mg, 7.5mg, 10mg	2
Olanzapine ODT	5mg, 10mg	2
Risperidone	0.25mg, 0.5mg, 1mg, 2mg	2
Risperidone microsphere injection	25mg	0.072
Risperidone ODT	0.5mg, 1mg, 2mg	2
GU Anticholinergics		
Darifenacin	7.5mg	2
Oxybutynin (includes generic and Ditropan XL®)	5mg	2
Solifenacin	5mg	2
Tolterodine LA	2mg	2
Miscellaneous Agents		
Carvedilol CR	10mg, 20mg, 40mg	2
Cetirizine	5mg	2
Divalproex (Depakote ER®)	250mg	2
Donepezil	5mg	2
Donepezil ODT	5mg	2

Drug	Strength	Units per Day
Galantamine	8mg	2
Glipizide XL (includes generic, Glucotrol XL [®])	2.5mg, 5mg	2
Meloxicam (includes generic and Mobic [®])	7.5mg	2
Niacin SA	500mg	2
Miscellaneous Antidepressants		
Bupropion XL	150mg	2
Mirtazapine (includes generic and Remeron [®])	7.5mg, 15mg	2
Mirtazapine ODT (includes generic and Remeron [®] soltabs)	15mg	2
Venlafaxine XR	37.5mg, 75mg	2
HMG CoA Reductase Inhibitors		
Atorvastatin	10mg, 20mg, 40mg	2
Fluvastatin	20mg, 40mg	2
Lovastatin IR/SR (includes generic, Mevacor [®] , and Altoprev [®])	10mg, 20mg	2
Pravastatin	10mg, 20mg, 40mg	2
Rosuvastatin	5mg, 10mg, 20mg	2
Simvastatin	5mg, 10mg, 20mg, 40mg	2
Calcium Channel Blockers		
Amlodipine	2.5mg, 5mg	2
Felodipine	2.5mg, 5mg	2
Nifedipine SR (includes Procardia XL [®] and Adalat CC [®])	30mg	2
Nisoldipine	10mg, 20mg	2
Verapamil 24hr SR	100mg	2
Proton Pump Inhibitors		
Esomeprazole	20mg	2
Lansoprazole	15mg	2
Omeprazole	10mg, 20mg	2
Pantoprazole	20mg	2
SSRI Agents		
Citalopram	10mg, 20mg	2
Escitalopram	5mg, 10mg	2
Paroxetine	10mg, 12.5mg, 20mg	2
Sertraline	25mg, 50mg	2
Stimulants		
Amphetamine/ Dextroamphetamine XL	5mg, 10mg, 15mg	2
Dexmethylphenidate XR	5mg, 10mg	2
Dextroamphetamine SR	5mg	2
Methylphenidate ER capsules	10mg, 20mg	2

Drug	Strength	Units per Day
Methylphenidate ER tablets	10mg, 18mg, 27mg	2
Methylphenidate patch	10mg, 15mg	2

Step 3 (diagnosis of heart failure) Required diagnosis: 1 Look back timeframe: 365 days	
Diagnosis Code	Description
4280	CONGESTIVE HEART FAILURE, UNSPECIFIED
4281	LEFT HEART FAILURE
4289	HEART FAILURE NOS
42820	UNSPECIFIED SYSTOLIC HEART FAILURE
42821	ACUTE SYSTOLIC HEART FAILURE
42822	CHRONIC SYSTOLIC HEART FAILURE
42823	ACUTE ON CHRONIC SYSTOLIC HEART FAILURE
42830	UNSPECIFIED DIASTOLIC HEART FAILURE
42831	ACUTE DIASTOLIC HEART FAILURE
42832	CHRONIC DIASTOLIC HEART FAILURE
42833	ACUTE ON CHRONIC DIASTOLIC HEART FAILURE
42840	UNSPECIFIED COMBINED SYSTOLIC AND DIASTOLIC HEART FAILURE
42841	ACUTE COMBINED SYSTOLIC AND DIASTOLIC HEART FAILURE
42842	CHRONIC COMBINED SYSTOLIC AND DIASTOLIC HEART FAILURE
42843	ACUTE ON CHRONIC COMBINED SYSTOLIC AND DIASTOLIC HEART FAILURE



Drug Regimen Optimization

Clinical Edit Criteria References

1. Institute of Medicine. Crossing the quality chasm: a new health system for the 21st century. Washington, DC: National Academy Press, 2001.
2. Chernew M, Smith DG, Kirking DM, Fendrick AM. Decomposing pharmaceutical cost growth in different types of health plans. *Am J Manag Care*. 2001; 7:667-673.
3. Berg JS, et al. Medication compliance: a health care problem. *Ann Pharmacother*. 1993; 27(9 suppl):S5-S19.
4. Bayliss, E, et al. How can I improve patient adherence to prescribed medications? *J Fam Pract*. 2001; 50(4): 303-304.
5. Eisen SA, Miller DK, Woodward RS, Spitznagel E, Przybeck TR. The effect of prescribed daily dose frequency on patient medication compliance. *Arch Intern Med*. 1990; 150:1881-1884.
6. Leenen FH, et al. Patterns of compliance with once versus twice daily antihypertensive drug therapy in primary care: a randomized clinical trial using electronic monitoring. *Can J Cardiology*. 1997; 13(10): 914-920.
7. Brown, BG, et al. Moderate dose, three-drug therapy with niacin, lovastatin, and colestipol to reduce low-density lipoprotein cholesterol < 100mg/dl in patients with hyperlipidemia and coronary artery disease. *Am J Cardiol*. 1997; 80: 111-115.
8. Ernst, M, et al. Prescription medication costs. *Arch Fam Med*. 2000; 9: 1002-1007.
9. Reichert, S, et al. Physicians' attitudes about prescribing and knowledge of the costs of common medications. *Arch Intern Med*. 2000; 160: 2799-2803.
10. Dubois RW, Shawla AJ, Neslusan CA, Smith MW, Wade S. Explaining drug spending trends: does perception match reality? *Health Aff* 2000; 19(2):231-239.

Publication History

The Publication History records the publication iterations and revisions to this document. Notes for the *most current revision* are also provided in the **Revision Notes** on the first page of this document.

Publication Date	Notes
01/31/2011	Initial publication and posting to website
07/18/2012	Removed sitagliptin from DRO edit, per client request