

**Texas Prior Authorization Program
Clinical Edit Criteria**

Drug/Drug Class**OxyContin (Oxycodone)****Clinical Edit Information Included in this Document****OxyContin (Oxycodone) Low Dose**

- **Drugs requiring prior authorization:** the list of drugs requiring prior authorization for this clinical edit
- **Prior authorization criteria logic:** a description of how the prior authorization request will be evaluated against the clinical edit criteria rules
- **Logic diagram:** a visual depiction of the clinical edit criteria logic
- **Supporting tables:** a collection of information associated with the steps within the criteria (diagnosis codes, procedure codes, and therapy codes); provided when applicable
- **References:** clinical publications and sources relevant to this clinical edit

OxyContin (Oxycodone) High Dose

- **Drugs requiring prior authorization:** the list of drugs requiring prior authorization for this clinical edit
- **Prior authorization criteria logic:** a description of how the prior authorization request will be evaluated against the clinical edit criteria rules
- **Logic diagram:** a visual depiction of the clinical edit criteria logic
- **Supporting tables:** a collection of information associated with the steps within the criteria (diagnosis codes, procedure codes, and therapy codes); provided when applicable
- **References:** clinical publications and sources relevant to this clinical edit

Note: Click the hyperlink to navigate directly to that section.

Revision Notes

- Clarified sections specifying the dosage form/strengths of OxyContin[®] (oxycodone) requiring prior authorization
- In the “Clinical Edit Criteria Logic” section for high dose OxyContin, clarified wording associated with step 1
- In each “Clinical Edit Supporting Tables” section, revised tables to specify the diagnosis codes pertinent to steps 1 and 3 of the logic diagram
- In the “Clinical Edit Supporting Tables” section for low dose OxyContin, revised tables to specify the drug names and GCNs pertinent to step 2 of the logic diagram
- In the “Clinical Edit Supporting Tables” section for high dose OxyContin, revised tables to specify the drug names and GCNs pertinent to steps 2 and 4 of the logic diagram



**OxyContin (Oxycodone)
Low Dose
Drugs Requiring Prior Authorization**

Drugs Requiring Prior Authorization	
Label Name	GCN
OXYCONTIN 10 MG TABLET	16282
OXYCONTIN 15 MG TABLET	99238
OXYCONTIN 20 MG TABLET	16283
OXYCONTIN 30 MG TABLET	99239
OXYCONTIN 40 MG TABLET	16284



OxyContin (Oxycodone)
Low Dose
Clinical Edit Criteria Logic

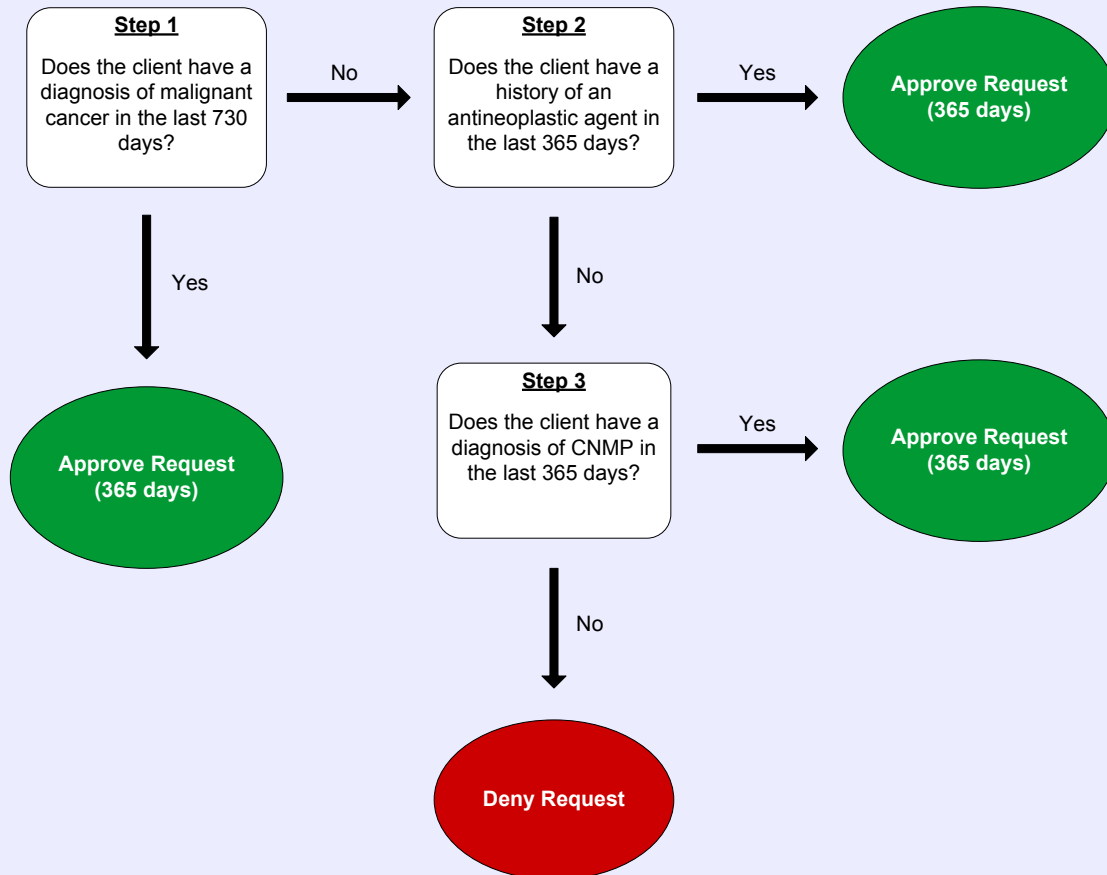
1. Does the client have a diagnosis of malignant cancer in the last 730 days?
[] Yes (Approve – 365 days)
[] No (Go to #2)

2. Does the client have a history of an antineoplastic agent in the last 365 days?
[] Yes (Approve – 365 days)
[] No (Go to #3)

3. Does the client have a diagnosis of CNMP in the last 365 days?
[] Yes (Approve – 365 days)
[] No (Deny)



OxyContin (Oxycodone) Low Dose Clinical Edit Criteria Logic Diagram





OxyContin (Oxycodone) Low Dose Clinical Edit Criteria Supporting Tables

Step 1 (diagnosis of malignant cancer)	
Required diagnosis: 1	
Look back timeframe: 730 days	
Malignant Cancer Diagnosis Codes	
ICD-9 Code	Description
1400	MAL NEO UPPER VERMILION
1401	MAL NEO LOWER VERMILION
1403	MAL NEO UPPER LIP, INNER
1404	MAL NEO LOWER LIP, INNER
1405	MAL NEO LIP, INNER NOS
1406	MAL NEO LIP, COMMISSURE
1408	MAL NEO LIP NEC
1409	MAL NEO LIP/VERMIL NOS
141	MALIGNANT NEOPLASM OF TONGUE
1410	MAL NEO TONGUE BASE
1411	MAL NEO DORSAL TONGUE
1412	MAL NEO TIP/LAT TONGUE
1413	MAL NEO VENTRAL TONGUE
1414	MAL NEO ANT 2/3 TONGUE
1415	MAL NEO TONGUE JUNCTION
1416	MAL NEO LINGUAL TONSIL
1418	MALIG NEO TONGUE NEC
1419	MALIG NEO TONGUE NOS
142	MALIGNANT NEOPLASM OF MAJOR SALIVARY GLANDS
1420	MALIG NEO PAROTID
1421	MALIG NEO SUBMANDIBULAR
1422	MALIG NEO SUBLINGUAL
1428	MAL NEO MAJ SALIVARY NEC
1429	MAL NEO SALIVARY NOS
143	MALIGNANT NEOPLASM OF GUM
1430	MALIG NEO UPPER GUM
1431	MALIG NEO LOWER GUM
1438	MALIG NEO GUM NEC
1439	MALIG NEO GUM NOS

Step 1 (diagnosis of malignant cancer)	
Required diagnosis: 1	
Look back timeframe: 730 days	
Malignant Cancer Diagnosis Codes	
ICD-9 Code	Description
144	MALIGNANT NEOPLASM OF FLOOR OF MOUTH
1440	MAL NEO ANT FLOOR MOUTH
1441	MAL NEO LAT FLOOR MOUTH
1448	MAL NEO MOUTH FLOOR NEC
1449	MAL NEO MOUTH FLOOR NOS
145	MALIGNANT NEOPLASM OF OTHER AND UNSPECIFIED PARTS OF MOUTH
1450	MAL NEO CHEEK MUCOSA
1451	MAL NEO MOUTH VESTIBULE
1452	MALIG NEO HARD PALATE
1453	MALIG NEO SOFT PALATE
1454	MALIGNANT NEOPLASM UVULA
1455	MALIGNANT NEO PALATE NOS
1456	MALIG NEO RETROMOLAR
1458	MALIG NEOPLASM MOUTH NEC
1459	MALIG NEOPLASM MOUTH NOS
146	MALIGNANT NEOPLASM OF OROPHARYNX
1460	MALIGNANT NEOPL TONSIL
1461	MAL NEO TONSILLAR FOSSA
1462	MAL NEO TONSIL PILLARS
1463	MALIGN NEOPL VALLECULA
1464	MAL NEO ANT EPIGLOTTIS
1465	MAL NEO EPIGLOTTIS JUNCT
1466	MAL NEO LAT OROPHARYNX
1467	MAL NEO POST OROPHARYNX
1468	MAL NEO OROPHARYNX NEC
1469	MALIG NEO OROPHARYNX NOS
147	MALIGNANT NEOPLASM OF NASOPHARYNX
1470	MAL NEO SUPER NASOPHARYN
1471	MAL NEO POST NASOPHARYNX
1472	MAL NEO LAT NASOPHARYNX
1473	MAL NEO ANT NASOPHARYNX
1478	MAL NEO NASOPHARYNX NEC
1479	MAL NEO NASOPHARYNX NOS
148	MALIGNANT NEOPLASM OF HYPOPHARYNX

Step 1 (diagnosis of malignant cancer)	
Required diagnosis: 1	
Look back timeframe: 730 days	
Malignant Cancer Diagnosis Codes	
ICD-9 Code	Description
1480	MAL NEO POSTCRICOID
1481	MAL NEO PYRIFORM SINUS
1482	MAL NEO ARYEPIGLOTT FOLD
1483	MAL NEO POST HYPOPHARYNX
1488	MAL NEO HYPOPHARYNX NEC
1489	MAL NEO HYPOPHARYNX NOS
149	MALIGNANT NEOPLASM OF OTHER AND ILL-DEFINED SITES WITHIN THE LIP ORAL CAVITY AND PHARYNX
1490	MAL NEO PHARYNX NOS
1491	MAL NEO WALDEYER'S RING
1498	MAL NEO ORAL/PHARYNX NEC
1499	MAL NEO OROPHRYN ILL-DEF
150	MALIGNANT NEOPLASM OF ESOPHAGUS
1500	MAL NEO CERVICAL ESOPHAG
1501	MAL NEO THORACIC ESOPHAG
1502	MAL NEO ABDOMIN ESOPHAG
1503	MAL NEO UPPER 3RD ESOPH
1504	MAL NEO MIDDLE 3RD ESOPH
1505	MAL NEO LOWER 3RD ESOPH
1508	MAL NEO ESOPHAGUS NEC
1509	MAL NEO ESOPHAGUS NOS
151	MALIGNANT NEOPLASM OF STOMACH
1510	MAL NEO STOMACH CARDIA
1511	MALIGNANT NEO PYLORUS
1512	MAL NEO PYLORIC ANTRUM
1513	MAL NEO STOMACH FUNDUS
1514	MAL NEO STOMACH BODY
1515	MAL NEO STOM LESSER CURV
1516	MAL NEO STOM GREAT CURV
1518	MALIG NEOPL STOMACH NEC
1519	MALIG NEOPL STOMACH NOS
152	MALIGNANT NEOPLASM OF SMALL INTESTINE INCLUDING DUODENUM
1520	MALIGNANT NEOPL DUODENUM
1521	MALIGNANT NEOPL JEJUNUM
1522	MALIGNANT NEOPLASM ILEUM

Step 1 (diagnosis of malignant cancer)	
Required diagnosis: 1	
Look back timeframe: 730 days	
Malignant Cancer Diagnosis Codes	
ICD-9 Code	Description
1523	MAL NEO MECKEL'S DIVERT
1528	MAL NEO SMALL BOWEL NEC
1529	MAL NEO SMALL BOWEL NOS
153	MALIGNANT NEOPLASM OF COLON
1530	MAL NEO HEPATIC FLEXURE
1531	MAL NEO TRANSVERSE COLON
1532	MAL NEO DESCEND COLON
1533	MAL NEO SIGMOID COLON
1534	MALIGNANT NEOPLASM CECUM
1535	MALIGNANT NEO APPENDIX
1536	MALIG NEO ASCEND COLON
1537	MAL NEO SPLENIC FLEXURE
1538	MALIGNANT NEO COLON NEC
1539	MALIGNANT NEO COLON NOS
154	MALIGNANT NEOPLASM OF RECTUM RECTOSIGMOID JUNCTION AND ANUS
1540	MAL NEO RECTOSIGMOID JCT
1541	MALIGNANT NEOPL RECTUM
1542	MALIG NEOPL ANAL CANAL
1543	MALIGNANT NEO ANUS NOS
1548	MAL NEO RECTUM/ANUS NEC
155	MALIGNANT NEOPLASM OF LIVER AND INTRAHEPATIC BILE DUCTS
1550	MAL NEO LIVER, PRIMARY
1551	MAL NEO INTRAHEPAT DUCTS
1552	MALIGNANT NEO LIVER NOS
156	MALIGNANT NEOPLASM OF GALLBLADDER AND EXTRAHEPATIC BILE DUCTS
1560	MALIG NEO GALLBLADDER
1561	MAL NEO EXTRAHEPAT DUCTS
1562	MAL NEO AMPULLA OF VATER
1568	MALIG NEO BILIARY NEC
1569	MALIG NEO BILIARY NOS
157	MALIGNANT NEOPLASM OF PANCREAS
1570	MAL NEO PANCREAS HEAD
1571	MAL NEO PANCREAS BODY
1572	MAL NEO PANCREAS TAIL

Step 1 (diagnosis of malignant cancer)	
Required diagnosis: 1	
Look back timeframe: 730 days	
Malignant Cancer Diagnosis Codes	
ICD-9 Code	Description
1573	MAL NEO PANCREATIC DUCT
1574	MAL NEO ISLET LANGERHANS
1578	MALIG NEO PANCREAS NEC
1579	MALIG NEO PANCREAS NOS
158	MALIGNANT NEOPLASM OF RETROPERITONEUM AND PERITONEUM
1580	MAL NEO RETROPERITONEUM
1588	MAL NEO PERITONEUM NEC
1589	MAL NEO PERITONEUM NOS
159	MALIGNANT NEOPLASM OF OTHER AND ILL-DEFINED SITES WITHIN THE DIGESTIVE ORGANS AND PERITONEUM
1590	MALIG NEO INTESTINE NOS
1591	MALIGNANT NEO SPLEEN NEC
1598	MAL NEO GI/INTRA-ABD NEC
1599	MAL NEO GI TRACT ILL-DEF
160	MALIGNANT NEOPLASM OF NASAL CAVITIES MIDDLE EAR AND ACCESSORY SINUSES
1600	MAL NEO NASAL CAVITIES
1601	MALIG NEO MIDDLE EAR
1602	MAL NEO MAXILLARY SINUS
1603	MAL NEO ETHMOIDAL SINUS
1604	MALIG NEO FRONTAL SINUS
1605	MAL NEO SPHENOID SINUS
1608	MAL NEO ACCESS SINUS NEC
1609	MAL NEO ACCESS SINUS NOS
161	MALIGNANT NEOPLASM OF LARYNX
1610	MALIGNANT NEO GLOTTIS
1611	MALIG NEO SUPRAGLOTTIS
1612	MALIG NEO SUBGLOTTIS
1613	MAL NEO CARTILAGE LARYNX
1618	MALIGNANT NEO LARYNX NEC
1619	MALIGNANT NEO LARYNX NOS
162	MALIGNANT NEOPLASM OF TRACHEA BRONCHUS AND LUNG
1620	MALIGNANT NEO TRACHEA
1622	MALIG NEO MAIN BRONCHUS
1623	MAL NEO UPPER LOBE LUNG

Step 1 (diagnosis of malignant cancer)	
Required diagnosis: 1	
Look back timeframe: 730 days	
Malignant Cancer Diagnosis Codes	
ICD-9 Code	Description
1624	MAL NEO MIDDLE LOBE LUNG
1625	MAL NEO LOWER LOBE LUNG
1628	MAL NEO BRONCH/LUNG NEC
1629	MAL NEO BRONCH/LUNG NOS
163	MALIGNANT NEOPLASM OF PLEURA
1630	MAL NEO PARIETAL PLEURA
1631	MAL NEO VISCERAL PLEURA
1638	MALIG NEOPL PLEURA NEC
1639	MALIG NEOPL PLEURA NOS
164	MALIGNANT NEOPLASM OF THYMUS HEART AND MEDIASTINUM
1640	MALIGNANT NEOPL THYMUS
1641	MALIGNANT NEOPL HEART
1642	MAL NEO ANT MEDIASTINUM
1643	MAL NEO POST MEDIASTINUM
1648	MAL NEO MEDIASTINUM NEC
1649	MAL NEO MEDIASTINUM NOS
165	MALIGNANT NEOPLASM OF OTHER AND ILL-DEFINED SITES WITHIN THE RESPIRATORY SYSTEM AND INTRATHORACIC ORGANS
1650	MAL NEO UPPER RESP NOS
1658	MAL NEO THORAX/RESP NEC
1659	MAL NEO RESP SYSTEM NOS
170	MALIGNANT NEOPLASM OF BONE AND ARTICULAR CARTILAGE
1700	MAL NEO SKULL/FACE BONE
1701	MALIGNANT NEO MANDIBLE
1702	MALIG NEO VERTEBRAE
1703	MAL NEO RIBS/STERN/CLAV
1704	MAL NEO LONG BONES ARM
1705	MAL NEO BONES WRIST/HAND
1706	MAL NEO PELVIC GIRDLE
1707	MAL NEO LONG BONES LEG
1708	MAL NEO BONES ANKLE/FOOT
1709	MALIG NEOPL BONE NOS
171	MALIGNANT NEOPLASM OF CONNECTIVE AND OTHER SOFT TISSUE
1710	MAL NEO SOFT TISSUE HEAD
1712	MAL NEO SOFT TISSUE ARM

Step 1 (diagnosis of malignant cancer)	
Required diagnosis: 1	
Look back timeframe: 730 days	
Malignant Cancer Diagnosis Codes	
ICD-9 Code	Description
1713	MAL NEO SOFT TISSUE LEG
1714	MAL NEO SOFT TIS THORAX
1715	MAL NEO SOFT TIS ABDOMEN
1716	MAL NEO SOFT TIS PELVIS
1717	MAL NEOPL TRUNK NOS
1718	MAL NEO SOFT TISSUE NEC
1719	MAL NEO SOFT TISSUE NOS
172	MALIGNANT MELANOMA OF SKIN
1720	MALIG MELANOMA LIP
1721	MALIG MELANOMA EYELID
1722	MALIG MELANOMA EAR
1723	MAL MELANOM FACE NEC/NOS
1724	MAL MELANOMA SCALP/NECK
1725	MALIG MELANOMA TRUNK
1726	MALIG MELANOMA ARM
1727	MALIG MELANOMA LEG
1728	MALIG MELANOMA SKIN NEC
1729	MALIG MELANOMA SKIN NOS
173	OTHER MALIGNANT NEOPLASM OF SKIN
1730	MALIG NEO SKIN LIP
1731	MALIG NEO SKIN EYELID
1732	MALIG NEO SKIN EAR
1733	MAL NEO SKIN FACE NEC
1734	MAL NEO SCALP/SKIN NECK
1735	MALIG NEO SKIN TRUNK
1736	MALIG NEO SKIN ARM
1737	MALIG NEO SKIN LEG
1738	MALIG NEO SKIN NEC
1739	MALIG NEO SKIN NOS
174	MALIGNANT NEOPLASM OF FEMALE BREAST
1740	MALIG NEO NIPPLE
1741	MAL NEO BREAST-CENTRAL
1742	MAL NEO BREAST UP-INNER
1743	MAL NEO BREAST LOW-INNER

Step 1 (diagnosis of malignant cancer)	
Required diagnosis: 1	
Look back timeframe: 730 days	
Malignant Cancer Diagnosis Codes	
ICD-9 Code	Description
1744	MAL NEO BREAST UP-OUTER
1745	MAL NEO BREAST LOW-OUTER
1746	MAL NEO BREAST-AXILLARY
1748	MALIGN NEOPL BREAST NEC
1749	MALIGN NEOPL BREAST NOS
175	MALIGNANT NEOPLASM OF MALE BREAST
1750	MAL NEO MALE NIPPLE
1759	MAL NEO MALE BREAST NEC
176	KAPOSI'S SARCOMA
1760	SKIN - KAPOSI'S SARCOMA
1761	SFT TISSUE - KPSI'S SRCMA
1762	PALATE - KPSI's SARCOMA
1763	GI SITES - KPSI'S SRCOMA
1764	LUNG - KAPOSI'S SARCOMA
1765	LYM NDS - KPSI'S SARCOMA
1768	SPF STS - KPSI'S SARCOMA
1769	KAPOSI'S SARCOMA NOS
179	MALIG NEOPL UTERUS NOS
180	MALIGNANT NEOPLASM OF CERVIX UTERI
1800	MALIG NEO ENDOCERVIX
1801	MALIG NEO EXOCERVIX
1808	MALIG NEO CERVIX NEC
1809	MAL NEO CERVIX UTERI NOS
181	MALIGNANT NEOPL PLACENTA
182	MALIGNANT NEOPLASM OF BODY OF UTERUS
1820	MALIG NEO CORPUS UTERI
1821	MAL NEO UTERINE ISTHMUS
1828	MAL NEO BODY UTERUS NEC
183	MALIGNANT NEOPLASM OF OVARY AND OTHER UTERINE ADNEXA
1830	MALIGN NEOPL OVARY
1832	MAL NEO FALLOPIAN TUBE
1833	MAL NEO BROAD LIGAMENT
1834	MALIG NEO PARAMETRIUM
1835	MAL NEO ROUND LIGAMENT

Step 1 (diagnosis of malignant cancer)	
Required diagnosis: 1	
Look back timeframe: 730 days	
Malignant Cancer Diagnosis Codes	
ICD-9 Code	Description
1838	MAL NEO ADNEXA NEC
1839	MAL NEO ADNEXA NOS
184	MALIGNANT NEOPLASM OF OTHER AND UNSPECIFIED FEMALE GENITAL ORGANS
1840	MALIGN NEOPL VAGINA
1841	MAL NEO LABIA MAJORA
1842	MAL NEO LABIA MINORA
1843	MALIGN NEOPL CLITORIS
1844	MALIGN NEOPL VULVA NOS
1848	MAL NEO FEMALE GENIT NEC
1849	MAL NEO FEMALE GENIT NOS
185	MALIGN NEOPL PROSTATE
186	MALIGNANT NEOPLASM OF TESTIS
1860	MAL NEO UNDESCEND TESTIS
1869	MALIG NEO TESTIS NEC
187	MALIGNANT NEOPLASM OF PENIS AND OTHER MALE GENITAL ORGANS
1871	MALIGN NEOPL PREPUCE
1872	MALIG NEO GLANS PENIS
1873	MALIG NEO PENIS BODY
1874	MALIG NEO PENIS NOS
1875	MALIG NEO EPIDIDYMIS
1876	MAL NEO SPERMATIC CORD
1877	MALIGN NEOPL SCROTUM
1878	MAL NEO MALE GENITAL NEC
1879	MAL NEO MALE GENITAL NOS
188	MALIGNANT NEOPLASM OF BLADDER
1880	MAL NEO BLADDER-TRIGONE
1881	MAL NEO BLADDER-DOME
1882	MAL NEO BLADDER-LATERAL
1883	MAL NEO BLADDER-ANTERIOR
1884	MAL NEO BLADDER-POST
1885	MAL NEO BLADDER NECK
1886	MAL NEO URETERIC ORIFICE
1887	MALIG NEO URACHUS
1888	MALIG NEO BLADDER NEC

Step 1 (diagnosis of malignant cancer)	
Required diagnosis: 1	
Look back timeframe: 730 days	
Malignant Cancer Diagnosis Codes	
ICD-9 Code	Description
1889	MALIG NEO BLADDER NOS
189	MALIGNANT NEOPLASM OF KIDNEY AND OTHER AND UNSPECIFIED URINARY ORGANS
1890	MALIG NEOPL KIDNEY
1891	MALIG NEO RENAL PELVIS
1892	MALIGN NEOPL URETER
1893	MALIGN NEOPL URETHRA
1894	MAL NEO PARAURETHRAL
1898	MAL NEO URINARY NEC
1899	MAL NEO URINARY NOS
190	MALIGNANT NEOPLASM OF EYE
1900	MALIGN NEOPL EYEBALL
1901	MALIGN NEOPL ORBIT
1902	MAL NEO LACRIMAL GLAND
1903	MAL NEO CONJUNCTIVA
1904	MALIGN NEOPL CORNEA
1905	MALIGN NEOPL RETINA
1906	MALIGN NEOPL CHOROID
1907	MAL NEO LACRIMAL DUCT
1908	MALIGN NEOPL EYE NEC
1909	MALIGN NEOPL EYE NOS
191	MALIGNANT NEOPLASM OF BRAIN
1910	MALIGN NEOPL CEREBRUM
1911	MALIG NEO FRONTAL LOBE
1912	MAL NEO TEMPORAL LOBE
1913	MAL NEO PARIETAL LOBE
1914	MAL NEO OCCIPITAL LOBE
1915	MAL NEO CEREB VENTRICLE
1916	MAL NEO CEREBELLUM NOS
1917	MAL NEO BRAIN STEM
1918	MALIG NEO BRAIN NEC
1919	MALIG NEO BRAIN NOS
192	MALIGNANT NEOPLASM OF OTHER AND UNSPECIFIED PARTS OF NERVOUS SYSTEM
1920	MAL NEO CRANIAL NERVES

Step 1 (diagnosis of malignant cancer)	
Required diagnosis: 1	
Look back timeframe: 730 days	
Malignant Cancer Diagnosis Codes	
ICD-9 Code	Description
1921	MAL NEO CEREBRAL MENING
1922	MAL NEO SPINAL CORD
1923	MAL NEO SPINAL MENINGES
1928	MAL NEO NERVOUS SYST NEC
1929	MAL NEO NERVOUS SYST NOS
193	MALIGN NEOPL THYROID
194	MALIGNANT NEOPLASM OF OTHER ENDOCRINE GLANDS AND RELATED STRUCTURES
1940	MALIGN NEOPL ADRENAL
1941	MALIG NEO PARATHYROID
1943	MALIG NEO PITUITARY
1944	MALIGN NEO PINEAL GLAND
1945	MAL NEO CAROTID BODY
1946	MAL NEO PARAGANGLIA NEC
1948	MAL NEO ENDOCRINE NEC
1949	MAL NEO ENDOCRINE NOS
195	MALIGNANT NEOPLASM OF OTHER AND ILL-DEFINED SITES
1950	MAL NEO HEAD/FACE/NECK
1951	MALIGN NEOPL THORAX
1952	MALIG NEO ABDOMEN
1953	MALIGN NEOPL PELVIS
1954	MALIGN NEOPL ARM
1955	MALIGN NEOPL LEG
1958	MALIG NEO SITE NEC
196	SECONDARY AND UNSPECIFIED MALIGNANT NEOPLASM OF LYMPH NODES
1960	MAL NEO LYMPH-HEAD/NECK
1961	MAL NEO LYMPH-INTRATHOR
1962	MAL NEO LYMPH INTRA-ABD
1963	MAL NEO LYMPH-AXILLA/ARM
1965	MAL NEO LYMPH-INGUIN/LEG
1966	MAL NEO LYMPH-INTRAPELV
1968	MAL NEO LYMPH NODE-MULT
1969	MAL NEO LYMPH NODE NOS
197	SECONDARY MALIGNANT NEOPLASM OF RESPIRATORY AND DIGESTIVE SYSTEMS

Step 1 (diagnosis of malignant cancer)	
Required diagnosis: 1	
Look back timeframe: 730 days	
Malignant Cancer Diagnosis Codes	
ICD-9 Code	Description
1970	SECONDARY MALIG NEO LUNG
1971	SEC MAL NEO MEDIASTINUM
1972	SECOND MALIG NEO PLEURA
1973	SEC MALIG NEO RESP NEC
1974	SEC MALIG NEO SM BOWEL
1975	SEC MALIG NEO LG BOWEL
1976	SEC MAL NEO PERITONEUM
1977	SECOND MALIG NEO LIVER
1978	SEC MAL NEO GI NEC
198	SECONDARY MALIGNANT NEOPLASM OF OTHER SPECIFIED SITES
1980	SECOND MALIG NEO KIDNEY
1981	SEC MALIG NEO URIN NEC
1982	SECONDARY MALIG NEO SKIN
1983	SEC MAL NEO BRAIN/SPINE
1984	SEC MALIG NEO NERVE NEC
1985	SECONDARY MALIG NEO BONE
1986	SECOND MALIG NEO OVARY
1987	SECOND MALIG NEO ADRENAL
1988	SECONDARY MALIGNANT NEOPLASM OF OTHER SPECIFIED SITES
19881	SECOND MALIG NEO BREAST
19882	SECOND MALIG NEO GENITAL
19889	SECONDARY MALIG NEO NEC
199	MALIGNANT NEOPLASM WITHOUT SPECIFICATION OF SITE
1990	MALIG NEO DISSEMINATED
1991	MALIGNANT NEOPLASM NOS
1992	MALIGNANT NEOPLASM ASSOCIATED WITH TRANSPLANT ORGAN
200	LYMPHOSARCOMA AND RETICULOSARCOMA AND OTHER SPECIFIED MALIGNANT TUMORS OF LYMPHATIC TISSUE
2000	RETICULOSARCOMA
20000	RETCLSRC UNSP XTRNDL ORG
20001	RETICULOSARCOMA HEAD
20002	RETICULOSARCOMA THORAX
20003	RETICULOSARCOMA ABDOM
20004	RETICULOSARCOMA AXILLA
20005	RETICULOSARCOMA INGUIN

Step 1 (diagnosis of malignant cancer)	
Required diagnosis: 1	
Look back timeframe: 730 days	
Malignant Cancer Diagnosis Codes	
ICD-9 Code	Description
20006	RETICULOSARCOMA PELVIC
20007	RETICULOSARCOMA SPLEEN
20008	RETICULOSARCOMA MULT
2001	LYMPHOSARCOMA
20010	LYMPHSRC UNSP XTRNDL ORG
20011	LYMPHOSARCOMA HEAD
20012	LYMPHOSARCOMA THORAX
20013	LYMPHOSARCOMA ABDOM
20014	LYMPHOSARCOMA AXILLA
20015	LYMPHOSARCOMA INGUIN
20016	LYMPHOSARCOMA PELVIC
20017	LYMPHOSARCOMA SPLEEN
20018	LYMPHOSARCOMA MULT
2002	BURKITT'S TUMOR OR LYMPHOMA
20020	BRKT TMR UNSP XTRNDL ORG
20021	BURKITT'S TUMOR HEAD
20022	BURKITT'S TUMOR THORAX
20023	BURKITT'S TUMOR ABDOM
20024	BURKITT'S TUMOR AXILLA
20025	BURKITT'S TUMOR INGUIN
20026	BURKITT'S TUMOR PELVIC
20027	BURKITT'S TUMOR SPLEEN
20028	BURKITT'S TUMOR MULT
2003	MARGINAL ZONE LYMPHOMA
20030	MARGINAL ZONE LYMPHOMA, UNSPECIFIED SITE, EXTRANODAL AND SOLID ORGAN SITES
20031	MARGINAL ZONE LYMPHOMA, LYMPH NODES OF HEAD, FACE, AND NECK
20032	MARGINAL ZONE LYMPHOMA, INTRATHORACIC LYMPH NODES
20033	MARGINAL ZONE LYMPHOMA, INTRAABDOMINAL LYMPH NODES
20034	MARGINAL ZONE LYMPHOMA, LYMPH NODES OF AXILLA AND UPPER LIMB
20035	MARGINAL ZONE LYMPHOMA, LYMPH NODES OF INGUINAL REGION AND LOWER LIMB
20036	MARGINAL ZONE LYMPHOMA, INTRAPELVIC LYMPH NODES
20037	MARGINAL ZONE LYMPHOMA, SPLEEN
20038	MARGINAL ZONE LYMPHOMA, LYMPH NODES OF MULTIPLE SITES

Step 1 (diagnosis of malignant cancer)	
Required diagnosis: 1	
Look back timeframe: 730 days	
Malignant Cancer Diagnosis Codes	
ICD-9 Code	Description
2004	MANTLE CELL LYMPHOMA
20040	MANTLE CELL LYMPHOMA, UNSPECIFIED SITE, EXTRANODAL AND SOLID ORGAN SITES
20041	MANTLE CELL LYMPHOMA, LYMPH NODES OF HEAD, FACE, AND NECK
20042	MANTLE CELL LYMPHOMA, INTRATHORACIC LYMPH NODES
20043	MANTLE CELL LYMPHOMA, INTRA-ABDOMINAL LYMPH NODES
20044	MANTLE CELL LYMPHOMA, LYMPH NODES OF AXILLA AND UPPER LIMB
20045	MANTLE CELL LYMPHOMA, LYMPH NODES OF INGUINAL REGION AND LOWER LIMB
20046	MANTLE CELL LYMPHOMA, INTRAPELVIC LYMPH NODES
20047	MANTLE CELL LYMPHOMA, SPLEEN
20048	MANTLE CELL LYMPHOMA, LYMPH NODES OF MULTIPLE SITES
2005	PRIMARY CENTRAL NERVOUS SYSTEM LYMPHOMA
20050	PRIMARY CENTRAL NERVOUS SYSTEM LYMPHOMA, UNSPECIFIED SITE, EXTRANODAL AND SOLID ORGAN SITES
20051	PRIMARY CENTRAL NERVOUS SYSTEM LYMPHOMA, LYMPH NODES OF HEAD, FACE, AND NECK
20052	PRIMARY CENTRAL NERVOUS SYSTEM LYMPHOMA, INTRATHORACIC LYMPH NODES
20053	PRIMARY CENTRAL NERVOUS SYSTEM LYMPHOMA, INTRA-ABDOMINAL LYMPH NODES
20054	PRIMARY CENTRAL NERVOUS SYSTEM LYMPHOMA, LYMPH NODES OF AXILLA AND UPPER LIMB
20055	PRIMARY CENTRAL NERVOUS SYSTEM LYMPHOMA, LYMPH NODES OF INGUINAL REGION AND LOWER LIMB
20056	PRIMARY CENTRAL NERVOUS SYSTEM LYMPHOMA, INTRAPELVIC LYMPH NODES
20057	PRIMARY CENTRAL NERVOUS SYSTEM LYMPHOMA, SPLEEN
20058	PRIMARY CENTRAL NERVOUS SYSTEM LYMPHOMA, LYMPH NODES OF MULTIPLE SITES
2006	ANAPLASTIC LARGE CELL LYMPHOMA
20060	ANAPLASTIC LARGE CELL LYMPHOMA, UNSPECIFIED SITE, EXTRANODAL AND SOLID ORGAN SITES
20061	ANAPLASTIC LARGE CELL LYMPHOMA, LYMPH NODES OF HEAD, FACE, AND NECK
20062	ANAPLASTIC LARGE CELL LYMPHOMA, INTRATHORACIC LYMPH NODES
20063	ANAPLASTIC LARGE CELL LYMPHOMA, INTRA-ABDOMINAL LYMPH NODES
20064	ANAPLASTIC LARGE CELL LYMPHOMA, LYMPH NODES OF AXILLA AND UPPER LIMB

Step 1 (diagnosis of malignant cancer)	
Required diagnosis: 1	
Look back timeframe: 730 days	
Malignant Cancer Diagnosis Codes	
ICD-9 Code	Description
20065	ANAPLASTIC LARGE CELL LYMPHOMA, LYMPH NODES OF INGUINAL REGION AND LOWER LIMB
20066	ANAPLASTIC LARGE CELL LYMPHOMA, INTRAPELVIC LYMPH NODES
20067	ANAPLASTIC LARGE CELL LYMPHOMA, SPLEEN
20068	ANAPLASTIC LARGE CELL LYMPHOMA, LYMPH NODES OF MULTIPLE SITES
2007	LARGE CELL LYMPHOMA
20070	LARGE CELL LYMPHOMA, UNSPECIFIED SITE, EXTRANODAL AND SOLID ORGAN SITES
20071	LARGE CELL LYMPHOMA, LYMPH NODES OF HEAD, FACE, AND NECK
20072	LARGE CELL LYMPHOMA, INTRATHORACIC LYMPH NODES
20073	LARGE CELL LYMPHOMA, INTRA-ABDOMINAL LYMPH NODES
20074	LARGE CELL LYMPHOMA, LYMPH NODES OF AXILLA AND UPPER LIMB
20075	LARGE CELL LYMPHOMA, LYMPH NODES OF INGUINAL REGION AND LOWER LIMB
20076	LARGE CELL LYMPHOMA, INTRAPELVIC LYMPH NODES
20077	LARGE CELL LYMPHOMA, SPLEEN
20078	LARGE CELL LYMPHOMA, LYMPH NODES OF MULTIPLE SITES
2008	OTHER NAMED VARIANTS OF LYMPHOSARCOMA AND RETICULOSARCOMA
20080	OTH VARN UNSP XTRNDL ORG
20081	MIXED LYMPHOSARC HEAD
20082	MIXED LYMPHOSARC THORAX
20083	MIXED LYMPHOSARC ABDOM
20084	MIXED LYMPHOSARC AXILLA
20085	MIXED LYMPHOSARC INGUIN
20086	MIXED LYMPHOSARC PELVIC
20087	MIXED LYMPHOSARC SPLEEN
20088	MIXED LYMPHOSARC MULT
201	HODGKIN'S DISEASE
2010	HODGKIN'S PARAGRANULOMA
20100	HDGK PRG UNSP XTRNDL ORG
20101	HODGKINS PARAGRAN HEAD
20102	HODGKINS PARAGRAN THORAX
20103	HODGKINS PARAGRAN ABDOM
20104	HODGKINS PARAGRAN AXILLA
20105	HODGKINS PARAGRAN INGUIN
20106	HODGKINS PARAGRAN PELVIC

Step 1 (diagnosis of malignant cancer)	
Required diagnosis: 1	
Look back timeframe: 730 days	
Malignant Cancer Diagnosis Codes	
ICD-9 Code	Description
20107	HODGKINS PARAGRAN SPLEEN
20108	HODGKINS PARAGRAN MULT
2011	HODGKIN'S GRANULOMA
20110	HODGK GRN UNSP XTRNDL ORG
20111	HODGKINS GRANULOM HEAD
20112	HODGKINS GRANULOM THORAX
20113	HODGKINS GRANULOM ABDOM
20114	HODGKINS GRANULOM AXILLA
20115	HODGKINS GRANULOM INGUIN
20116	HODGKINS GRANULOM PELVIC
20117	HODGKINS GRANULOM SPLEEN
20118	HODGKINS GRANULOM MULT
2012	HODGKIN'S SARCOMA
20120	HODGK SRC UNSP XTRNDL ORG
20121	HODGKINS SARCOMA HEAD
20122	HODGKINS SARCOMA THORAX
20123	HODGKINS SARCOMA ABDOM
20124	HODGKINS SARCOMA AXILLA
20125	HODGKINS SARCOMA INGUIN
20126	HODGKINS SARCOMA PELVIC
20127	HODGKINS SARCOMA SPLEEN
20128	HODGKINS SARCOMA MULT
2014	HODGKIN'S DISEASE LYMPHOCYTIC-HISTIOCYTIC PREDOMINANCE
20140	LYM-HST UNSP XTRNDL ORGN
20141	HODG LYMPH-HISTIO HEAD
20142	HODG LYMPH-HISTIO THORAX
20143	HODG LYMPH-HISTIO ABDOM
20144	HODG LYMPH-HISTIO AXILLA
20145	HODG LYMPH-HISTIO INGUIN
20146	HODG LYMPH-HISTIO PELVIC
20147	HODG LYMPH-HISTIO SPLEEN
20148	HODG LYMPH-HISTIO MULT
2015	HODGKIN'S DISEASE NODULAR SCLEROSIS
20150	NDR SCLR UNSP XTRNDL ORG

Step 1 (diagnosis of malignant cancer)	
Required diagnosis: 1	
Look back timeframe: 730 days	
Malignant Cancer Diagnosis Codes	
ICD-9 Code	Description
20151	HODG NODUL SCLERO HEAD
20152	HODG NODUL SCLERO THORAX
20153	HODG NODUL SCLERO ABDOM
20154	HODG NODUL SCLERO AXILLA
20155	HODG NODUL SCLERO INGUIN
20156	HODG NODUL SCLERO PELVIC
20157	HODG NODUL SCLERO SPLEEN
20158	HODG NODUL SCLERO MULT
2016	HODGKIN'S DISEASE MIXED CELLULARITY
20160	MXD CELR UNSP XTRNDL ORG
20161	HODGKINS MIX CELL HEAD
20162	HODGKINS MIX CELL THORAX
20163	HODGKINS MIX CELL ABDOM
20164	HODGKINS MIX CELL AXILLA
20165	HODGKINS MIX CELL INGUIN
20166	HODGKINS MIX CELL PELVIC
20167	HODGKINS MIX CELL SPLEEN
20168	HODGKINS MIX CELL MULT
2017	HODGKIN'S DISEASE LYMPHOCYTIC DEPLETION
20170	LYM DPLT UNSP XTRNDL ORG
20171	HODG LYMPH DEPLET HEAD
20172	HODG LYMPH DEPLET THORAX
20173	HODG LYMPH DEPLET ABDOM
20174	HODG LYMPH DEPLET AXILLA
20175	HODG LYMPH DEPLET INGUIN
20176	HODG LYMPH DEPLET PELVIC
20177	HODG LYMPH DEPLET SPLEEN
20178	HODG LYMPH DEPLET MULT
2019	HODGKIN'S DISEASE UNSPECIFIED TYPE
20190	HDGK DIS UNSP XTRNDL ORG
20191	HODGKINS DIS NOS HEAD
20192	HODGKINS DIS NOS THORAX
20193	HODGKINS DIS NOS ABDOM
20194	HODGKINS DIS NOS AXILLA

Step 1 (diagnosis of malignant cancer)	
Required diagnosis: 1	
Look back timeframe: 730 days	
Malignant Cancer Diagnosis Codes	
ICD-9 Code	Description
20195	HODGKINS DIS NOS INGUIN
20196	HODGKINS DIS NOS PELVIC
20197	HODGKINS DIS NOS SPLEEN
20198	HODGKINS DIS NOS MULT
202	OTHER MALIGNANT NEOPLASMS OF LYMPHOID AND HISTIOCYTIC TISSUE
2020	NODULAR LYMPHOMA
20200	NDLR LYM UNSP XTRNDL ORG
20201	NODULAR LYMPHOMA HEAD
20202	NODULAR LYMPHOMA THORAX
20203	NODULAR LYMPHOMA ABDOM
20204	NODULAR LYMPHOMA AXILLA
20205	NODULAR LYMPHOMA INGUIN
20206	NODULAR LYMPHOMA PELVIC
20207	NODULAR LYMPHOMA SPLEEN
20208	NODULAR LYMPHOMA MULT
2021	MYCOSIS FUNGOIDES
20210	MYCS FNG UNSP XTRNDL ORG
20211	MYCOSIS FUNGOIDES HEAD
20212	MYCOSIS FUNGOIDES THORAX
20213	MYCOSIS FUNGOIDES ABDOM
20214	MYCOSIS FUNGOIDES AXILLA
20215	MYCOSIS FUNGOIDES INGUIN
20216	MYCOSIS FUNGOIDES PELVIC
20217	MYCOSIS FUNGOIDES SPLEEN
20218	MYCOSIS FUNGOIDES MULT
2022	SEZARY'S DISEASE
20220	SZRY DIS UNSP XTRNDL ORG
20221	SEZARY'S DISEASE HEAD
20222	SEZARY'S DISEASE THORAX
20223	SEZARY'S DISEASE ABDOM
20224	SEZARY'S DISEASE AXILLA
20225	SEZARY'S DISEASE INGUIN
20226	SEZARY'S DISEASE PELVIC
20227	SEZARY'S DISEASE SPLEEN

Step 1 (diagnosis of malignant cancer)	
Required diagnosis: 1	
Look back timeframe: 730 days	
Malignant Cancer Diagnosis Codes	
ICD-9 Code	Description
20228	SEZARY'S DISEASE MULT
2023	MALIGNANT HISTIOCYTOSIS
20230	MLG HIST UNSP XTRNDL ORG
20231	MAL HISTIOCYTOSIS HEAD
20232	MAL HISTIOCYTOSIS THORAX
20233	MAL HISTIOCYTOSIS ABDOM
20234	MAL HISTIOCYTOSIS AXILLA
20235	MAL HISTIOCYTOSIS INGUIN
20236	MAL HISTIOCYTOSIS PELVIC
20237	MAL HISTIOCYTOSIS SPLEEN
20238	MAL HISTIOCYTOSIS MULT
2024	LEUKEMIC RETICULOENDOTHELIOSIS
20240	LK RTCTL UNSP XTRNDL ORG
20241	HAIRY-CELL LEUKEM HEAD
20242	HAIRY-CELL LEUKEM THORAX
20243	HAIRY-CELL LEUKEM ABDOM
20244	HAIRY-CELL LEUKEM AXILLA
20245	HAIRY-CELL LEUKEM INGUIN
20246	HAIRY-CELL LEUKEM PELVIC
20247	HAIRY-CELL LEUKEM SPLEEN
20248	HAIRY-CELL LEUKEM MULT
2025	LETTERER-SIWE DISEASE
20250	LTR-SIWE UNSP XTRNDL ORG
20251	LETTERER-SIWE DIS HEAD
20252	LETTERER-SIWE DIS THORAX
20253	LETTERER-SIWE DIS ABDOM
20254	LETTERER-SIWE DIS AXILLA
20255	LETTERER-SIWE DIS INGUIN
20256	LETTERER-SIWE DIS PELVIC
20257	LETTERER-SIWE DIS SPLEEN
20258	LETTERER-SIWE DIS MULT
2026	MALIGNANT MAST CELL TUMORS
20260	MLG MAST UNSP XTRNDL ORG
20261	MAL MASTOCYTOSIS HEAD

Step 1 (diagnosis of malignant cancer)	
Required diagnosis: 1	
Look back timeframe: 730 days	
Malignant Cancer Diagnosis Codes	
ICD-9 Code	Description
20262	MAL MASTOCYTOSIS THORAX
20263	MAL MASTOCYTOSIS ABDOM
20264	MAL MASTOCYTOSIS AXILLA
20265	MAL MASTOCYTOSIS INGUIN
20266	MAL MASTOCYTOSIS PELVIC
20267	MAL MASTOCYTOSIS SPLEEN
20268	MAL MASTOCYTOSIS MULT
2027	PERIPHERAL T-CELL LYMPHOMA
20270	PERIPHERAL T CELL LYMPHOMA, UNSPECIFIED SITE, EXTRANODAL AND SOLID ORGAN SITES
20271	PERIPHERAL T CELL LYMPHOMA, LYMPH NODES OF HEAD, FACE, AND NECK
20272	PERIPHERAL T CELL LYMPHOMA, INTRATHORACIC LYMPH NODES
20273	PERIPHERAL T CELL LYMPHOMA, INTRA-ABDOMINAL LYMPH NODES
20274	PERIPHERAL T CELL LYMPHOMA, LYMPH NODES OF AXILLA AND UPPER LIMB
20275	PERIPHERAL T CELL LYMPHOMA, LYMPH NODES OF INGUINAL REGION AND LOWER LIMB
20276	PERIPHERAL T CELL LYMPHOMA, INTRAPELVIC LYMPH NODES
20277	PERIPHERAL T CELL LYMPHOMA, SPLEEN
20278	PERIPHERAL T CELL LYMPHOMA, LYMPH NODES OF MULTIPLE SITES
2028	OTHER MALIGNANT LYMPHOMAS
20280	OTH LYMP UNSP XTRNDL ORG
20281	LYMPHOMAS NEC HEAD
20282	LYMPHOMAS NEC THORAX
20283	LYMPHOMAS NEC ABDOM
20284	LYMPHOMAS NEC AXILLA
20285	LYMPHOMAS NEC INGUIN
20286	LYMPHOMAS NEC PELVIC
20287	LYMPHOMAS NEC SPLEEN
20288	LYMPHOMAS NEC MULT
2029	OTHER AND UNSPECIFIED MALIGNANT NEOPLASMS OF LYMPHOID AND HISTIOCYTIC TISSUE
20290	UNSP LYM UNSP XTRNDL ORG
20291	LYMPHOID MAL NEC HEAD
20292	LYMPHOID MAL NEC THORAX

Step 1 (diagnosis of malignant cancer)	
Required diagnosis: 1	
Look back timeframe: 730 days	
Malignant Cancer Diagnosis Codes	
ICD-9 Code	Description
20293	LYMPHOID MAL NEC ABDOM
20294	LYMPHOID MAL NEC AXILLA
20295	LYMPHOID MAL NEC INGUIN
20296	LYMPHOID MAL NEC PELVIC
20297	LYMPHOID MAL NEC SPLEEN
20298	LYMPHOID MAL NEC MULT
203	MULTIPLE MYELOMA AND IMMUNOPROLIFERATIVE NEOPLASMS
2030	MULTIPLE MYELOMA
20300	MULTIPLE MYELOMA, WITHOUT MENTION OF HAVING ACHIEVED REMISSION
20301	MULT MYELM W REMISSION
20302	MULTIPLE MYELOMA, IN RELAPSE
2031	PLASMA CELL LEUKEMIA
20310	PLASMA CELL LEUKEMIA, WITHOUT MENTION OF HAVING ACHIEVED REMISSION
20311	PLSM CELL LEUK W RMSON
20312	PLASMA CELL LEUKEMIA, IN RELAPSE
2038	OTHER IMMUNOPROLIFERATIVE NEOPLASMS
20380	OTHER IMMUNOPROLIFERATIVE NEOPLASMS, WITHOUT MENTION OF HAVING ACHIEVED REMISSION
20381	OTH IMNPRFL NPL W RMSN
20382	OTHER IMMUNOPROLIFERATIVE NEOPLASMS, IN RELAPSE
204	LYMPHOID LEUKEMIA
2040	ACUTE LYMPHOID LEUKEMIA
20400	ACUTE LYMPHOID LEUKEMIA, WITHOUT MENTION OF HAVING ACHIEVED REMISSION
20401	ACT LYM LEUK W RMSION
20402	ACUTE LYMPHOID LEUKEMIA, IN RELAPSE
2041	CHRONIC LYMPHOID LEUKEMIA
20410	CHRONIC LYMPHOID LEUKEMIA, WITHOUT MENTION OF HAVING ACHIEVED REMISSION
20411	CHR LYM LEUK W RMSION
20412	CHRONIC LYMPHOID LEUKEMIA, IN RELAPSE
2042	SUBACUTE LYMPHOID LEUKEMIA
20420	SUBACUTE LYMPHOID LEUKEMIA, WITHOUT MENTION OF HAVING ACHIEVED REMISSION
20421	SBAC LYM LEUK W RMSION

Step 1 (diagnosis of malignant cancer)	
Required diagnosis: 1	
Look back timeframe: 730 days	
Malignant Cancer Diagnosis Codes	
ICD-9 Code	Description
20422	SUBACUTE LYMPHOID LEUKEMIA, IN RELAPSE
2048	OTHER LYMPHOID LEUKEMIA
20480	OTHER LYMPHOID LEUKEMIA, WITHOUT MENTION OF HAVING ACHIEVED REMISSION
20481	OTH LYM LEUK W RMSION
20482	OTHER LYMPHOID LEUKEMIA, IN RELAPSE
2049	UNSPECIFIED LYMPHOID LEUKEMIA
20490	UNSPECIFIED LYMPHOID LEUKEMIA, WITHOUT MENTION OF HAVING ACHIEVED REMISSION
20491	UNS LYM LEUK W RMSION
20492	UNSPECIFIED LYMPHOID LEUKEMIA, IN RELAPSE
205	MYELOID LEUKEMIA
2050	ACUTE MYELOID LEUKEMIA
20500	ACUTE MYELOID LEUKEMIA, WITHOUT MENTION OF HAVING ACHIEVED REMISSION
20501	ACT MYL LEUK W RMSION
20502	ACUTE MYELOID LEUKEMIA, IN RELAPSE
2051	CHRONIC MYELOID LEUKEMIA
20510	CHRONIC MYELOID LEUKEMIA, WITHOUT MENTION OF HAVING ACHIEVED REMISSION
20511	CHR MYL LEUK W RMSION
20512	CHRONIC MYELOID LEUKEMIA, IN RELAPSE
2052	SUBACUTE MYELOID LEUKEMIA
20520	SUBACUTE MYELOID LEUKEMIA, WITHOUT MENTION OF HAVING ACHIEVED REMISSION
20521	SBAC MYL LEUK W RMSION
20522	SUBACUTE MYELOID LEUKEMIA, IN RELAPSE
2053	MYELOID SARCOMA
20530	MYELOID SARCOMA, WITHOUT MENTION OF HAVING ACHIEVED REMISSION
20531	MYL SRCOMA W RMSION
20532	MYELOID SARCOMA, IN RELAPSE
2058	OTHER MYELOID LEUKEMIA
20580	OTHER MYELOID LEUKEMIA, WITHOUT MENTION OF HAVING ACHIEVED REMISSION
20581	OTH MYL LEUK W RMSION
20582	OTHER MYELOID LEUKEMIA, IN RELAPSE

Step 1 (diagnosis of malignant cancer)	
Required diagnosis: 1	
Look back timeframe: 730 days	
Malignant Cancer Diagnosis Codes	
ICD-9 Code	Description
2059	UNSPECIFIED MYELOID LEUKEMIA
20590	UNSPECIFIED MYELOID LEUKEMIA, WITHOUT MENTION OF HAVING ACHIEVED REMISSION
20591	UNS MYL LEUK W RMSION
20592	UNSPECIFIED MYELOID LEUKEMIA, IN RELAPSE
206	MONOCYTIC LEUKEMIA
2060	ACUTE MONOCYTIC LEUKEMIA
20600	ACUTE MONOCYTIC LEUKEMIA, WITHOUT MENTION OF HAVING ACHIEVED REMISSION
20601	ACT MONO LEUK W RMSION
20602	ACUTE MONOCYTIC LEUKEMIA, IN RELAPSE
2061	CHRONIC MONOCYTIC LEUKEMIA
20610	CHRONIC MONOCYTIC LEUKEMIA, WITHOUT MENTION OF HAVING ACHIEVED REMISSION
20611	CHR MONO LEUK W RMSION
20612	CHRONIC MONOCYTIC LEUKEMIA, IN RELAPSE
2062	SUBACUTE MONOCYTIC LEUKEMIA
20620	SUBACUTE MONOCYTIC LEUKEMIA, WITHOUT MENTION OF HAVING ACHIEVED REMISSION
20621	SBAC MONO LEUK W RMSION
20622	SUBACUTE MONOCYTIC LEUKEMIA, IN RELAPSE
2068	OTHER MONOCYTIC LEUKEMIA
20680	OTHER MONOCYTIC LEUKEMIA, WITHOUT MENTION OF HAVING ACHIEVED REMISSION
20681	OTH MONO LEUK W RMSION
20682	OTHER MONOCYTIC LEUKEMIA, IN RELAPSE
2069	UNSPECIFIED MONOCYTIC LEUKEMIA
20690	UNSPECIFIED MONOCYTIC LEUKEMIA, WITHOUT MENTION OF HAVING ACHIEVED REMISSION
20691	UNS MONO LEUK W RMSION
20692	UNSPECIFIED MONOCYTIC LEUKEMIA, IN RELAPSE
207	OTHER SPECIFIED LEUKEMIA
2070	ACUTE ERYTHREMIA AND ERYTHROLEUKEMIA
20700	ACUTE ERYTHREMIA AND ERYTHROLEUKEMIA, WITHOUT MENTION OF HAVING ACHIEVED REMISSION
20701	ACT ERTH/ERYLK W RMSON
20702	ACUTE ERYTHREMIA AND ERYTHROLEUKEMIA, IN RELAPSE

Step 1 (diagnosis of malignant cancer)	
Required diagnosis: 1	
Look back timeframe: 730 days	
Malignant Cancer Diagnosis Codes	
ICD-9 Code	Description
2071	CHRONIC ERYTHREMIA
20710	CHRONIC ERYTHREMIA, WITHOUT MENTION OF HAVING ACHIEVED REMISSION
20711	CHR ERYTHRM W REMISION
20712	CHRONIC ERYTHREMIA, IN RELAPSE
2072	MEGAKARYOCYTIC LEUKEMIA
20720	MEGAKARYOCYTIC LEUKEMIA, WITHOUT MENTION OF HAVING ACHIEVED REMISSION
20721	MGKRYCYT LEUK W RMSION
20722	MEGAKARYOCYTIC LEUKEMIA, IN RELAPSE
2078	OTHER SPECIFIED LEUKEMIA
20780	OTHER SPECIFIED LEUKEMIA, WITHOUT MENTION OF HAVING ACHIEVED REMISSION
20781	OTH SPF LEUK W REMSION
20782	OTHER SPECIFIED LEUKEMIA, IN RELAPSE
208	LEUKEMIA OF UNSPECIFIED CELL TYPE
2080	ACUTE LEUKEMIA OF UNSPECIFIED CELL TYPE
20800	ACUTE LEUKEMIA OF UNSPECIFIED CELL TYPE, WITHOUT MENTION OF HAVING ACHIEVED REMISSION
20801	ACT LEUK UNS CL W RMSON
20802	ACUTE LEUKEMIA OF UNSPECIFIED CELL TYPE, IN RELAPSE
2081	CHRONIC LEUKEMIA OF UNSPECIFIED CELL TYPE
20810	CHRONIC LEUKEMIA OF UNSPECIFIED CELL TYPE, WITHOUT MENTION OF HAVING ACHIEVED REMISSION
20811	CHR LEUK UNS CL W RMSON
20812	CHRONIC LEUKEMIA OF UNSPECIFIED CELL TYPE, IN RELAPSE
2082	SUBACUTE LEUKEMIA OF UNSPECIFIED CELL TYPE
20820	SUBACUTE LEUKEMIA OF UNSPECIFIED CELL TYPE, WITHOUT MENTION OF HAVING ACHIEVED REMISSION
20821	SBAC LEUK UNS CL W RMSON
20822	SUBACUTE LEUKEMIA OF UNSPECIFIED CELL TYPE, IN RELAPSE
2088	OTHER LEUKEMIA OF UNSPECIFIED CELL TYPE
20880	OTHER LEUKEMIA OF UNSPECIFIED CELL TYPE, WITHOUT MENTION OF HAVING ACHIEVED REMISSION
20881	OTH LEUK UNS CL W RMSON
20882	OTHER LEUKEMIA OF UNSPECIFIED CELL TYPE, IN RELAPSE
2089	UNSPECIFIED LEUKEMIA

Step 1 (diagnosis of malignant cancer)	
Required diagnosis: 1	
Look back timeframe: 730 days	
Malignant Cancer Diagnosis Codes	
ICD-9 Code	Description
20890	UNSPECIFIED LEUKEMIA, WITHOUT MENTION OF HAVING ACHIEVED REMISSION
20891	LEUKEMIA NOS W REMISSION

Step 2 (history of an antineoplastic agent)	
Required quantity: 1	
Look back timeframe: 365 days	
Antineoplastic Agents	
Label Name	GCN
ALKERAN 2 MG TABLET	38380
ANASTROZOLE 1 MG TABLET	24410
ARIMIDEX 1 MG TABLET	24410
AROMASIN 25 MG TABLET	92896
AVODART 0.5 MG SOFTGEL	18428
AZELEX 20% CREAM	62874
BICALUTAMIDE 50 MG TABLET	00450
CARAC CREAM	12514
CASODEX 50 MG TABLET	00450
CEENU 10 MG CAPSULE	38431
CEENU 40 MG CAPSULE	38433
CEENU 100 MG CAPSULE	38432
COSMEGEN 0.5 MG VIAL	96679
CYCLOPHOSPHAMIDE 25 MG TAB	38360
CYCLOPHOSPHAMIDE 50 MG TABLET	38361
CYTARABINE 20 MG/ML VIAL	27365
CYTARABINE 20 MG/ML VIAL	34230
CYTARABINE 20 MG/ML VIAL	97825
CYTARABINE 100 MG VIAL	21485
CYTARABINE 100 MG/ML VIAL	34231
CYTARABINE 500 MG VIAL	21503
CYTARABINE 1 GM VIAL	21473
CYTARABINE 2 GM VIAL	21501
DROXIA 200 MG CAPSULE	38402
DROXIA 300 MG CAPSULE	38403

Step 2 (history of an antineoplastic agent)	
Required quantity: 1	
Look back timeframe: 365 days	
Antineoplastic Agents	
Label Name	GCN
DROXIA 400 MG CAPSULE	38404
EFUDEX 5% CREAM	30781
EFUDEX 2% SOLUTION	30791
EFUDEX 5% SOLUTION	30792
EMCYT 140 MG CAPSULE	38700
ETOPOSIDE 50 MG CAPSULE	07560
ETOPOSIDE 100 MG/5 ML VIAL	07481
ETOPOSIDE 500 MG/25 ML VIAL	07481
ETOPOSIDE 1,000 MG/50 ML VIAL	07481
EVISTA 60 MG TABLET	59011
FARESTON 60 MG TABLET	42721
FEMARA 2.5 MG TABLET	49541
FINACEA 15% GEL	19198
FINASTERIDE 5 MG TABLET	30521
FLUOROPLEX 1% CREAM	30780
FLUOROURACIL 5% CREAM	30781
FLUOROURACIL 2% TOPICAL SOLN	30791
FLUOROURACIL 5% TOP SOLUTION	30792
FLUTAMIDE 125 MG CAPSULE	25740
GEMZAR 200 MG VIAL	38530
GEMZAR 1 GRAM VIAL	38532
GLEEVEC 100 MG TABLET	19908
GLEEVEC 400 MG TABLET	19907
HEXALEN 50 MG CAPSULE	34221
HYCAMTIN 0.25 MG CAPSULE	14254
HYCAMTIN 1 MG CAPSULE	14256
HYDROXYUREA 500 MG CAPSULE	38400
IRESSA 250 MG TABLET	19586
JALYN 0.5-0.4 MG CAPSULE	28596
LETROZOLE 2.5 MG TABLET	49541
LEUKERAN 2 MG TABLET	38370
LYSODREN 500 MG TABLET	38710
MATULANE 50 MG CAPSULE	38740
MEGACE 40 MG/ML ORAL SUSP	40381

Step 2 (history of an antineoplastic agent)	
Required quantity: 1	
Look back timeframe: 365 days	
Antineoplastic Agents	
Label Name	GCN
MEGACE ES 625 MG/5 ML SUSP	24948
MEGESTROL 20 MG TABLET	38680
MEGESTROL 40 MG TABLET	38681
MEGESTROL ACET 40 MG/ML SUSP	40381
MERCAPTOPYRINE 50 MG TABLET	38520
METHOTREXATE 2.5 MG TABLET	38489
METHOTREXATE 25 MG/ML VIAL	18936
METHOTREXATE 25 MG/ML VIAL	38466
MITOMYCIN 5 MG VIAL	38601
MITOMYCIN 20 MG VIAL	38600
MITOMYCIN 40 MG VIAL	38602
MITOXANTRONE 20 MG/10 ML VIAL	07544
MITOXANTRONE 25 MG/12.5 ML VL	07544
MITOXANTRONE 30 MG/15 ML VIAL	07544
MYLERAN 2 MG TABLET	38420
NEXAVAR 200 MG TABLET	26263
NILANDRON 150 MG TABLET	22645
NOVANTRONE 2 MG/ML VIAL	07544
OFORTA 10 MG TABLET	12473
ONCASPAR 750 UNIT/ML VIAL	24231
PROSCAR 5 MG TABLET	30521
PURINETHOL 50 MG TABLET	38520
RHEUMATREX 2.5 MG TABLET	17718
SPRYCEL 20 MG TABLET	27257
SPRYCEL 50 MG TABLET	27258
SPRYCEL 70 MG TABLET	27259
SUTENT 12.5 MG CAPSULE	26452
SUTENT 25 MG CAPSULE	26453
SUTENT 50 MG CAPSULE	26454
TABLOID 40 MG TABLET	10290
TAMOXIFEN 10 MG TABLET	38720
TAMOXIFEN 20 MG TABLET	38721
TARCEVA 25 MG TABLET	23795
TARCEVA 100 MG TABLET	23794

Step 2 (history of an antineoplastic agent)	
Required quantity: 1	
Look back timeframe: 365 days	
Antineoplastic Agents	
Label Name	GCN
TARCEVA 150 MG TABLET	23793
TARGRETIN 1% GEL	89921
TARGRETIN 75 MG SOFTGEL	92373
TASIGNA 150 MG CAPSULE	28737
TASIGNA 200 MG CAPSULE	99070
TEMODAR 5 MG CAPSULE	92893
TEMODAR 20 MG CAPSULE	92903
TEMODAR 100 MG CAPSULE	92913
TEMODAR 140 MG CAPSULE	98310
TEMODAR 180 MG CAPSULE	98311
TEMODAR 250 MG CAPSULE	92933
TREXALL 5 MG TABLET	13134
TREXALL 7.5 MG TABLET	38485
TREXALL 10 MG TABLET	06484
TREXALL 15 MG TABLET	13135
TYKERB 250 MG TABLET	98140
VINBLASTINE 1 MG/ML VIAL	38970
VINBLASTINE SULF 10 MG VIAL	38560
VINCRISTINE 1 MG/ML VIAL	38572
VINCRISTINE 2 MG/2 ML VIAL	97630
VOTRIENT 200 MG TABLET	27829
XELODA 150 MG TABLET	31611
XELODA 500 MG TABLET	31612
ZOLINZA 100 MG CAPSULE	97345

Step 3 (diagnosis of CNMP)	
Required diagnosis: 1	
Look back timeframe: 365 days	
CNMP Diagnosis Codes	
ICD-9 Code	Description
2506	DIABETES WITH NEUROLOGICAL MANIFESTATIONS
25060	DIABETES WITH NEUROLOGICAL MANIFESTATIONS, TYPE II OR UNSPECIFIED TYPE, NOT STATED AS UNCONTROLLED

Step 3 (diagnosis of CNMP)	
Required diagnosis: 1	
Look back timeframe: 365 days	
CNMP Diagnosis Codes	
ICD-9 Code	Description
25061	DIABETES WITH NEUROLOGICAL MANIFESTATIONS, TYPE I (JUVENILE TYPE), NOT STATED AS UNCONTROLLED
25062	DIABETES WITH NEUROLOGICAL MANIFESTATIONS, TYPE II OR UNSPECIFIED TYPE, UNCONTROLLED
25063	DIABETES WITH NEUROLOGICAL MANIFESTATIONS, TYPE I (JUVENILE TYPE), UNCONTROLLED
2507	DIABETES WITH PERIPHERAL CIRCULATORY DISORDERS
282	HEREDITARY HEMOLYTIC ANEMIAS
2820	HEREDITARY SPHEROCYTOSIS
2821	HEREDIT ELLIPTOCYTOSIS
2822	GLUTATHIONE DIS ANEMIA
2823	ENZYME DEFIC ANEMIA NEC
2824	THALASSEMIAS
28241	SICKLE-CELL THALASSEMIA WITHOUT CRISIS
28242	SICKLE-CELL THALASSEMIA WITH CRISIS
28249	OTHER THALASSEMIA
2825	SICKLE-CELL TRAIT
2826	SICKLE-CELL DISEASE, UNSPECIFIED
28260	SICKLE-CELL DISEASE, UNSPECIFIED
28261	HB-SS DISEASE WITHOUT CRISIS
28262	HB-SS DISEASE WITH CRISIS
28263	SICKLE-CELL/HB-C DISEASE WITHOUT CRISIS
28264	SICKLE-CELL/HB-C DISEASE WITH CRISIS
28268	OTHER SICKLE-CELL DISEASE WITHOUT CRISIS
28269	OTHER SICKLE-CELL DISEASE WITH CRISIS
2827	HEMOGLOBINOPATHIES NEC
2828	HERED HEMOLYTIC ANEM NEC
2829	HERED HEMOLYTIC ANEM NOS
283	ACQUIRED HEMOLYTIC ANEMIAS
2830	AUTOIMMUN HEMOLYTIC ANEM
2831	NON-AUTOIMMUNE HEMOLYTIC ANEMIAS
28310	NONAUTO HEM ANEMIA NOS
28311	HEMOLYTIC UREMIC SYND
28319	OTH NONAUTO HEM ANEMIA
2832	HEMOLYTIC HEMOGLOBINURIA
2839	ACQ HEMOLYTIC ANEMIA NOS

Step 3 (diagnosis of CNMP)	
Required diagnosis: 1	
Look back timeframe: 365 days	
CNMP Diagnosis Codes	
ICD-9 Code	Description
284	APLASTIC ANEMIA AND OTHER BONE MARROW FAILURE SYNDROMES
2840	CONGEN APLASTIC ANEMIA
28401	CONSTITUTIONAL RED BLOOD CELL APLASIA
28409	OTHER CONSTITUTIONAL APLASTIC ANEMIA
2841	PANCYTOPENIA
2842	MYELOPHTHISIS
2848	OTHER SPECIFIED APLASTIC ANEMIAS
28481	RED CELL APLASIA (ACQUIRED)(ADULT)(WITH THYMOMA)
28489	OTHER SPECIFIED APLASTIC ANEMIAS
2849	APLASTIC ANEMIA NOS
285	OTHER AND UNSPECIFIED ANEMIAS
2850	SIDEROBLASTIC ANEMIA
2851	AC POSTHEMORRHAG ANEMIA
2852	ANEMIA OF CHRONIC DISEASE
28521	ANEMIA IN CHRONIC KIDNEY DISEASE
28522	ANEMIA IN NEOPLASTIC DIS
28529	ANEMIA OF OTHER CHRONIC DISEASE
2858	ANEMIA NEC
2859	ANEMIA NOS
286	COAGULATION DEFECTS
2860	CONG FACTOR VIII DISORDER
2861	CONG FACTOR IX DISORDER
2862	CONG FACTOR XI DISORDER
2863	CONG DEF CLOT FACTOR NEC
2864	VON WILLEBRAND'S DISEASE
2865	HEMORRHAGIC DISORDER DUE TO INTRINSIC CIRCULATING ANTICOAGULANTS
2866	DEFIBRINATION SYNDROME
2867	ACQ COAGUL FACTOR DEFIC
2869	COAGULAT DEFECT NEC/NOS
287	PURPURA AND OTHER HEMORRHAGIC CONDITIONS
2870	ALLERGIC PURPURA
2871	THROMBOCYTOPATHY
2872	PURPURA NOS
2873	PRIMARY THROMBOCYTOPENIA

Step 3 (diagnosis of CNMP)	
Required diagnosis: 1	
Look back timeframe: 365 days	
CNMP Diagnosis Codes	
ICD-9 Code	Description
28730	PRIMARY THROMBOCYTOPENIA, UNSPECIFIED.
28731	IMMUNE THROMBOCYTOPENIC PURPURA
28732	EVANS' SYNDROME
28733	CONGENITAL AND HEREDITARY THROMBOCYTOPENIC PURPURA.
28739	OTHER PRIMARY THROMBOCYTOPENIA.
2874	SECOND THROMBOCYTOPENIA
2875	THROMBOCYTOPENIA NOS
2878	HEMORRHAGIC COND NEC
2879	HEMORRHAGIC COND NOS
288	DISEASES OF WHITE BLOOD CELLS
2880	AGRANULOCYTOSIS
28800	NEUTROPENIA, UNSPECIFIED
28801	CONGENITAL NEUTROPENIA
28802	CYCLIC NEUTROPENIA
28803	DRUG INDUCED NEUTROPENIA
28804	NEUTROPENIA DUE TO INFECTION
28809	OTHER NEUTROPENIA
2881	FUNCTION DIS NEUTROPHILS
2882	GENETIC ANOMALY LEUKOCYT
2883	EOSINOPHILIA
2884	HEMOPHAGOCYTIC SYNDROMES
2885	DECREASED WHITE BLOOD CELL COUNT
28850	LEUKOCYTOPENIA, UNSPECIFIED
28851	LYMPHOCYTOPENIA
28859	OTHER DECREASED WHITE BLOOD CELL COUNT
2886	ELEVATED WHITE BLOOD CELL COUNT
28860	LEUKOCYTOSIS, UNSPECIFIED
28861	LYMPHOCYTOSIS (SYMPTOMATIC)
28862	LEUKEMOID REACTION
28863	MONOCYTOSIS (SYMPTOMATIC)
28864	PLASMACYTOSIS
28865	BASOPHILIA
28866	BANDEMIA
28869	OTHER ELEVATED WHITE BLOOD CELL COUNT

Step 3 (diagnosis of CNMP)	
Required diagnosis: 1	
Look back timeframe: 365 days	
CNMP Diagnosis Codes	
ICD-9 Code	Description
2888	WBC DISEASE NEC
2889	WBC DISEASE NOS
289	OTHER DISEASES OF BLOOD AND BLOOD-FORMING ORGANS
2890	SECONDARY POLYCYTHEMIA
2891	CHRONIC LYMPHADENITIS
2892	MESENTERIC LYMPHADENITIS
2893	LYMPHADENITIS NOS
2894	HYPERSPLENISM
2895	OTHER DISEASES OF SPLEEN
28950	SPLEEN DISEASE NOS
28951	CHR CONGEST SPLENOMEGALY
28952	SPLENIC SEQUESTRATION
28953	NEUTROPENIC SPLENOMEGALY
28959	SPLEEN DISEASE NEC
2896	FAMILIAL POLYCYTHEMIA
2897	METHEMOGLOBINEMIA
2898	BLOOD DISEASES NEC
28981	PRIMARY HYPERCOAGULABLE STATE
28982	SECONDARY HYPERCOAGULABLE STATE
28983	MYELOFIBROSIS
28984	HEPARIN-INDUCED THROMBOCYTOPENIA (HIT)
28989	OTHER SPECIFIED DISEASES OF BLOOD AND BLOOD-FORMING ORGANS
2899	BLOOD DISEASE NOS
290	DEMENTIAS
2900	SENILE DEMENTIA UNCOMP
2901	PRESENILE DEMENTIA
29010	PRESENILE DEMENTIA
29011	PRESENILE DELIRIUM
29012	PRESENILE DELUSION
29013	PRESENILE DEPRESSION
2902	SENILE DEMENTIA WITH DELUSIONAL OR DEPRESSIVE FEATURES
29020	SENILE DELUSION
29021	SENILE DEPRESSIVE
2903	SENILE DELIRIUM

Step 3 (diagnosis of CNMP)	
Required diagnosis: 1	
Look back timeframe: 365 days	
CNMP Diagnosis Codes	
ICD-9 Code	Description
2904	VASCULAR DEMENTIA
29040	VASCULAR DEMENTIA, UNCOMPLICATED
29041	VASCULAR DEMENTIA, WITH DELIRIUM
29042	VASCULAR DEMENTIA, WITH DELUSIONS
29043	VASCULAR DEMENTIA, WITH DEPRESSED MOOD
2908	SENILE PSYCHOSIS NEC
2909	SENILE PSYCHOT COND NOS
291	ALCOHOL-INDUCED MENTAL DISORDERS
2910	DELIRIUM TREMENS
2911	ALCOHOL-INDUCED PERSISTING AMNESTIC DISORDER
2912	ALCOHOL-INDUCED PERSISTING DEMENTIA
2913	ALCOHOL-INDUCED PSYCHOTIC DISORDER WITH HALLUCINATIONS
2914	PATHOLOGIC ALCOHOL INTOX
2915	ALCOHOL-INDUCED PSYCHOTIC DISORDER WITH DELUSIONS
2918	OTHER SPECIFIED ALCOHOL-INDUCED MENTAL DISORDERS
29181	ALCOHOL WITHDRAWAL
29182	ALCOHOL INDUCED SLEEP DISORDERS.
29189	OTHER SPECIFIED ALCOHOL-INDUCED MENTAL DISORDERS
2919	UNSPECIFIED ALCOHOL-INDUCED MENTAL DISORDERS
292	DRUG-INDUCED MENTAL DISORDERS
2920	DRUG WITHDRAWAL
2921	DRUG-INDUCED PSYCHOTIC DISORDERS
29211	DRUG-INDUCED PSYCHOTIC DISORDER WITH DELUSIONS
29212	DRUG -INDUCED PSYCHOTIC DISORDER WITH HALLUCINATIONS
2922	PATHOLOGIC DRUG INTOX
2928	OTHER SPECIFIED DRUG-INDUCED MENTAL DISORDERS
29281	DRUG-INDUCED DELIRIUM
29282	DRUG -INDUCED PERSISTING DEMENTIA
29283	DRUG -INDUCED PERSISTING AMNESTIC DISORDER
29284	DRUG-INDUCED MOOD DISORDER
29285	DRUG INDUCED SLEEP DISORDERS.
29289	DRUG MENTAL DISORDER NEC
2929	DRUG MENTAL DISORDER NOS
293	TRANSIENT MENTAL DISORDERS DUE TO CONDITIONS CLASSIFIED ELSEWHERE

Step 3 (diagnosis of CNMP)	
Required diagnosis: 1	
Look back timeframe: 365 days	
CNMP Diagnosis Codes	
ICD-9 Code	Description
2930	DELIRIUM DUE TO CONDITIONS CLASSIFIED ELSEWHERE
2931	SUBACUTE DELIRIUM
2938	OTHER SPECIFIED TRANSIENT MENTAL DISORDERS DUE TO CONDITIONS CLASSIFIED ELSEWHERE
29381	PSYCHOTIC DISORDER WITH DELUSIONS IN CONDITIONS CLASSIFIED ELSEWHERE
29382	PSYCHOTIC DISORDER WITH HALLUCINATIONS IN CONDITIONS CLASSIFIED ELSEWHERE
29383	MOOD DISORDER IN CONDITIONS CLASSIFIED ELSEWHERE
29384	ANXIETY DISORDER IN CONDITIONS CLASSIFIED ELSEWHERE
29389	OTHER SPECIFIED TRANSIENT MENTAL DISORDERS DUE TO CONDITIONS CLASSIFIED ELSEWHERE, OTHER
2939	UNSPECIFIED TRANSIENT MENTAL DISORDER IN CONDITIONS CLASSIFIED ELSEWHERE
294	PERSISTENT MENTAL DISORDERS DUE TO CONDITIONS CLASSIFIED ELSEWHERE
2940	AMNESTIC DISORDER IN CONDITIONS CLASSIFIED ELSEWHERE
2941	DEMENTIA IN CONDITIONS CLASSIFIED ELSEWHERE
29410	DEMENTIA W/O BEHAV DIST
29411	DEMENTIA W BEHAVIOR DIST
2948	OTHER PERSISTENT MENTAL DISORDERS DUE TO CONDITIONS CLASSIFIED ELSEWHERE
2949	UNSPECIFIED PERSISTENT MENTAL DISORDERS DUE TO CONDITIONS CLASSIFIED ELSEWHERE
295	SCHIZOPHRENIC DISORDERS
2950	SIMPLE TYPE SCHIZOPHRENIA
29500	SIMPL SCHIZOPHREN-UNSPEC
29501	SIMPL SCHIZOPHREN-SUBCHR
29502	SIMPLE SCHIZOPHREN-CHR
29503	SIMP SCHIZ-SUBCHR/EXACER
29504	SIMPL SCHIZO-CHR/EXACERB
29505	SIMPL SCHIZOPHREN-REMISS
2951	DISORGANIZED TYPE SCHIZOPHRENIA
29510	HEBEPHRENIA-UNSPEC
29511	HEBEPHRENIA-SUBCHRONIC
29512	HEBEPHRENIA-CHRONIC
29513	HEBEPHREN-SUBCHR/EXACERB

Step 3 (diagnosis of CNMP)	
Required diagnosis: 1	
Look back timeframe: 365 days	
CNMP Diagnosis Codes	
ICD-9 Code	Description
29514	HEBEPHRENIA-CHR/EXACERB
29515	HEBEPHRENIA-REMISSION
2952	CATATONIC TYPE SCHIZOPHRENIA
29520	CATATONIA-UNSPEC
29521	CATATONIA-SUBCHRONIC
29522	CATATONIA-CHRONIC
29523	CATATONIA-SUBCHR/EXACERB
29524	CATATONIA-CHR/EXACERB
29525	CATATONIA-REMISSION
2953	PARANOID TYPE SCHIZOPHRENIA
29530	PARANOID SCHIZO-UNSPEC
29531	PARANOID SCHIZO-SUBCHR
29532	PARANOID SCHIZO-CHRONIC
29533	PARAN SCHIZO-SUBCHR/EXAC
29534	PARAN SCHIZO-CHR/EXACERB
29535	PARANOID SCHIZO-REMISS
2954	SCHIZOPHRENIFORM DISORDER
29540	SCHIZOPHRENIFORM DISORDER, UNSPECIFIED
29541	SCHIZOPHRENIFORM DISORDER, SUBCHRONIC
29542	SCHIZOPHRENIFORM DISORDER, CHRONIC
29543	SCHIZOPHRENIFORM DISORDER, SUBCHRONIC WITH ACUTE EXACERBATION
29544	SCHIZOPHRENIFORM DISORDER, CHRONIC WITH ACUTE EXACERBATION
29545	SCHIZOPHRENIFORM DISORDER, IN REMISSION
2955	LATENT SCHIZOPHRENIA
29550	LATENT SCHIZOPHREN-UNSP
29551	LAT SCHIZOPHREN-SUBCHR
29552	LATENT SCHIZOPHREN-CHR
29553	LAT SCHIZO-SUBCHR/EXACER
29554	LATENT SCHIZO-CHR/EXACER
29555	LAT SCHIZOPHREN-REMISS
2956	SCHIZOPHRENIC DISORDERS RESIDUAL TYPE
29560	SCHIZOPHRENIC DISORDERS, RESIDUAL TYPE, UNSPECIFIED
29561	SCHIZOPHRENIC DISORDERS, RESIDUAL TYPE, SUBCHRONIC
29562	SCHIZOPHRENIC DISORDERS, RESIDUAL TYPE, CHRONIC

Step 3 (diagnosis of CNMP)	
Required diagnosis: 1	
Look back timeframe: 365 days	
CNMP Diagnosis Codes	
ICD-9 Code	Description
29563	SCHIZOPHRENIC DISORDERS, RESIDUAL TYPE, SUBCHRONIC WITH ACUTE EXACERBATION
29564	SCHIZOPHRENIC DISORDERS, RESIDUAL TYPE, CHRONIC WITH ACUTE EXACERBATION
29565	SCHIZOPHRENIC DISORDERS, RESIDUAL TYPE, IN REMISSION
2957	SCHIZOAFFECTIVE DISORDER
29570	SCHIZOAFFECTIVE DISORDER, UNSPECIFIED
29571	SCHIZOAFFECTIVE DISORDER, SUBCHRONIC
29572	SCHIZOAFFECTIVE DISORDER, CHRONIC
29573	SCHIZOAFFECTIVE DISORDER, SUBCHRONIC WITH ACUTE EXACERBATION
29574	SCHIZOAFFECTIVE DISORDER, CHRONIC WITH ACUTE EXACERBATION
29575	SCHIZOAFFECTIVE DISORDER, IN REMISSION
2958	OTHER SPECIFIED TYPES OF SCHIZOPHRENIA
29580	SCHIZOPHRENIA NEC-UNSPEC
29581	SCHIZOPHRENIA NEC-SUBCHR
29582	SCHIZOPHRENIA NEC-CHR
29583	SCHIZO NEC-SUBCHR/EXACER
29584	SCHIZO NEC-CHR/EXACERB
29585	SCHIZOPHRENIA NEC-REMISS
2959	UNSPECIFIED SCHIZOPHRENIA
29590	SCHIZOPHRENIA NOS-UNSPEC
29591	SCHIZOPHRENIA NOS-SUBCHR
29592	SCHIZOPHRENIA NOS-CHR
29593	SCHIZO NOS-SUBCHR/EXACER
29594	SCHIZO NOS-CHR/EXACERB
29595	SCHIZOPHRENIA NOS-REMISS
296	EPISODIC MOOD DISORDERS
2960	BIPOLAR I DISORDER SINGLE MANIC EPISODE
29600	BIPOLAR I DISORDER SINGLE MANIC EPISODE, UNSPECIFIED
29601	BIPOLAR I DISORDER SINGLE MANIC EPISODE, MILD
29602	BIPOLAR I DISORDER SINGLE MANIC EPISODE, MODERATE
29603	BIPOLAR 1 DISORDER, SINGLE MANIC EPISODE, SEVERE, WITHOUT MENTION OF PSYCHOTIC BEHAVIOR
29604	BIPOLAR I DISORDER, SINGLE MANIC EPISODE, SEVERE, SPECIFIED AS WITH PSYCHOTIC BEHAVIOR

Step 3 (diagnosis of CNMP)	
Required diagnosis: 1	
Look back timeframe: 365 days	
CNMP Diagnosis Codes	
ICD-9 Code	Description
29605	BIPOLAR I DISORDER, SINGLE MANIC EPISODE, IN PARTIAL OR UNSPECIFIED REMISSION
29606	BIPOLAR I DISORDER, SINGLE MANIC EPISODE, IN FULL REMISSION
2961	MANIC DISORDER RECURRENT EPISODE
29610	RECUR MANIC DIS-UNSPEC
29611	RECUR MANIC DIS-MILD
29612	RECUR MANIC DIS-MOD
29613	RECUR MANIC DIS-SEVERE
29614	RECUR MANIC-SEV W PSYCHO
29615	RECUR MANIC-PART REMISS
29616	RECUR MANIC-FULL REMISS
2962	MAJOR DEPRESSIVE DISORDER SINGLE EPISODE
29620	DEPRESS PSYCHOSIS-UNSPEC
29621	DEPRESS PSYCHOSIS-MILD
29622	DEPRESSIVE PSYCHOSIS-MOD
29623	DEPRESS PSYCHOSIS-SEVERE
29624	DEPR PSYCHOS-SEV W PSYCH
29625	DEPR PSYCHOS-PART REMISS
29626	DEPR PSYCHOS-FULL REMISS
2963	MAJOR DEPRESSIVE DISORDER RECURRENT EPISODE
29630	RECURR DEPR PSYCHOS-UNSP
29631	RECURR DEPR PSYCHOS-MILD
29632	RECURR DEPR PSYCHOS-MOD
29633	RECUR DEPR PSYCH-SEVERE
29634	REC DEPR PSYCH-PSYCHOTIC
29635	RECUR DEPR PSYC-PART REM
29636	RECUR DEPR PSYC-FULL REM
2964	BIPOLAR I DISORDER MOST RECENT EPISODE (OR CURRENT) MANIC
29640	BIPOLAR I DISORDER, MOST RECENT EPISODE (OR CURRENT) MANIC, UNSPECIFIED
29641	BIPOLAR I DISORDER, MOST RECENT EPISODE (OR CURRENT) MANIC, MILD
29642	BIPOLAR I DISORDER, MOST RECENT EPISODE (OR CURRENT) MANIC, MODERATE
29643	BIPOLAR I DISORDER, MOST RECENT EPISODE (OR CURRENT) MANIC, SEVERE, WITHOUT MENTION OF PSYCHOTIC BEHAVIOR

Step 3 (diagnosis of CNMP)	
Required diagnosis: 1	
Look back timeframe: 365 days	
CNMP Diagnosis Codes	
ICD-9 Code	Description
29644	BIPOLAR I DISORDER, MOST RECENT EPISODE (OR CURRENT) MANIC, SEVERE, SPECIFIED AS WITH PSYCHOTIC BEHAVIOR
29645	BIPOLAR I DISORDER, MOST RECENT EPISODE (OR CURRENT) MANIC, IN PARTIAL OR UNSPECIFIED REMISSION
29646	BIPOLAR I DISORDER, MOST RECENT EPISODE (OR CURRENT) MANIC, IN FULL REMISSION
2965	BIPOLAR I DISORDER MOST RECENT EPISODE (OR CURRENT) DEPRESSED
29650	BIPOLAR I DISORDER, MOST RECENT EPISODE (OR CURRENT) DEPRESSED, UNSPECIFIED
29651	BIPOLAR I DISORDER MOST RECENT EPISODE (OR CURRENT) DEPRESSED , MILD
29652	BIPOLAR I DISORDER MOST RECENT EPISODE (OR CURRENT) DEPRESSED, MODERATE
29653	BIPOLAR I DISORDER, MOST RECENT EPISODE (OR CURRENT) DEPRESSED, SEVERE, WITHOUT MENTION OF PSYCHOTIC BEHAVIOR
29654	BIPOLAR I DISORDER, MOST RECENT EPISODE (OR CURRENT) DEPRESSED, SEVERE, SPECIFIED AS WITH PSYCHOTIC BEHAVIOR
29655	BIPOLAR I DISORDER, MOST RECENT EPISODE (OR CURRENT) DEPRESSED, IN PARTIAL OR UNSPECIFIED REMISSION
29656	BIPOLAR I DISORDER, MOST RECENT EPISODE (OR CURRENT) DEPRESSED, IN FULL REMISSION
2966	BIPOLAR I DISORDER MOST RECENT EPISODE (OR CURRENT) MIXED
29660	BIPOLAR I DISORDER, MOST RECENT EPISODE (OR CURRENT) MIXED, UNSPECIFIED
29661	BIPOLAR I DISORDER, MOST RECENT EPISODE (OR CURRENT) MIXED, MILD
29662	BIPOLAR I DISORDER. MOST RECENT EPISODE (OR CURRENT) MIXED, MODERATE
29663	BIPOLAR I DISORDER, MOST RECENT EPISODE (OR CURRENT) MIXED, SEVERE, WITHOUT MENTION OF PSYCHOTIC BEHAVIOR
29664	BIPOLAR I DISORDER, MOST RECENT EPISODE (OR CURRENT) MIXED, SEVERE, SPECIFIED AS WITH PSYCHOTIC BEHAVIOR
29665	BIPOLAR I DISORDER, MOST RECENT EPISODE (OR CURRENT) MIXED, IN PARTIAL OR UNSPECIFIED REMISSION
29666	BIPOLAR I DISORDER, MOST RECENT EPISODE (OR CURRENT) MIXED, IN FULL REMISSION
2967	BIPOAR I DISORDER, MOST RECENT EPISODE (OR CURRENT) UNSPECIFIED
2968	OTHER AND UNSPECIFIED BIPOLAR DISORDERS
29680	BIPOLAR DISORDER, UNSPECIFIED
29681	ATYPICAL MANIC DISORDER

Step 3 (diagnosis of CNMP)	
Required diagnosis: 1	
Look back timeframe: 365 days	
CNMP Diagnosis Codes	
ICD-9 Code	Description
29682	ATYPICAL DEPRESSIVE DIS
29689	OTHER AND UNSPECIFIED BIPOLAR DISORDERS, OTHER
2969	OTHER AND UNSPECIFIED EPISODIC MOOD DISORDER
29690	UNSPECIFIED EPISODIC MOOD DISORDER
29699	OTHER SPECIFIED EPISODIC MOOD DISORDER
297	DELUSIONAL DISORDERS
2970	PARANOID STATE, SIMPLE
2971	DELUSIONAL DISORDER
2972	PARAPHRENIA
2973	SHARED PSYCHOTIC DISORDER
2978	PARANOID STATES NEC
2979	PARANOID STATE NOS
298	OTHER NONORGANIC PSYCHOSES
2980	REACT DEPRESS PSYCHOSIS
2981	EXCITATIV TYPE PSYCHOSIS
2982	REACTIVE CONFUSION
2983	ACUTE PARANOID REACTION
2984	PSYCHOGEN PARANOID PSYCH
2988	REACT PSYCHOSIS NEC/NOS
2989	PSYCHOSIS NOS
299	PERVASIVE DEVELOPMENTAL DISORDERS
2990	AUTISTIC DISORDER
29900	AUTISTIC DISORDER, CURRENT OR ACTIVE STATE
29901	AUTISTIC DISORDER, RESIDUAL STATE
2991	CHILDHOOD DISINTEGRATIVE DISORDER
29910	CHILDHOOD DISINTEGRATIVE DISORDER, CURRENT OR ACTIVE STATE
29911	CHILDHOOD DISINTEGRATIVE DISORDER , RESIDUAL STATE
2998	OTHER SPECIFIED PERVASIVE DEVELOPMENTAL DISORDERS
29980	OTHER SPECIFIED PERVASIVE DEVELOPMENTAL DISORDERS, CURRENT OR ACTIVE STATE
29981	OTHER SPECIFIED PERVASIVE DEVELOPMENTAL DISORDERS, RESIDUAL STATE
2999	UNSPECIFIED PERVASIVE DEVELOPMENTAL DISORDERS
29990	UNSPECIFIED PERVASIVE DEVELOPMENTAL DISORDER, CURRENT OR ACTIVE STATE
29991	UNSPECIFIED PERVASIVE DEVELOPMENTAL DISORDER, RESIDUAL STATE

Step 3 (diagnosis of CNMP)	
Required diagnosis: 1	
Look back timeframe: 365 days	
CNMP Diagnosis Codes	
ICD-9 Code	Description
300	ANXIETY, DISSOCIATIVE AND SOMATOFORM DISORDERS
3000	ANXIETY STATES
30000	ANXIETY STATE NOS
30001	PANIC DISORDER WITHOUT AGORAPHOBIA
30002	GENERALIZED ANXIETY DIS
30009	ANXIETY STATE NEC
3001	DISSOCIATIVE, CONVERSION AND FACTITIOUS DISORDERS
30010	HYSTERIA NOS
30011	CONVERSION DISORDER
30012	DISSOCIATIVE AMNESIA
30013	DISSOCIATIVE FUGUE
30014	DISSOCIATIVE IDENTITY DISORDER
30015	DISSOCIATIVE REACT NOS
30016	FACTITIOUS DISORDER WITH PREDOMINANTLY PSYCHOLOGICAL SIGNS AND SYMPTOMS
30019	FACTITIOUS ILL NEC/NOS
3002	PHOBIC DISORDERS
30020	PHOBIA NOS
30021	AGORAPHOBIA WITH PANIC DISORDER
30022	AGORAPHOBIA W/O PANIC
30023	SOCIAL PHOBIA
30029	OTHER ISOLATED OR SPECIFIC PHOBIAS
3003	OBSESSIVE-COMPULSIVE DIS
3004	DYSTHYMIC DISORDER
3005	NEURASTHENIA
3006	DEPERSONALIZATION DISORDER
3007	HYPOCHONDRIASIS
3008	SOMATOFORM DISORDERS
30081	SOMATIZATION DISORDER
30082	UNDIFF SOMATOFORM DISRDR
30089	OTHER SOMATOFORM DISORDERS
3009	UNSPECIFIED NONPSYCHOTIC MENTAL DISORDER
301	PERSONALITY DISORDERS
3010	PARANOID PERSONALITY
3011	AFFECTIVE PERSONALITY DISORDER

Step 3 (diagnosis of CNMP)	
Required diagnosis: 1	
Look back timeframe: 365 days	
CNMP Diagnosis Codes	
ICD-9 Code	Description
30110	AFFECTIV PERSONALITY NOS
30111	CHRONIC HYPOMANIC PERSON
30112	CHR DEPRESSIVE PERSON
30113	CYCLOTHYMIC DISORDER
3012	SCHIZOID PERSONALITY DISORDER
30120	SCHIZOID PERSONALITY NOS
30121	INTROVERTED PERSONALITY
30122	SCHIZOTYPAL PERSONALITY DISORDER
3013	EXPLOSIVE PERSONALITY
3014	OBSESSIVE-COMPULSIVE PERSONALITY DISORDER
3015	HISTRIONIC PERSONALITY DISORDER
30150	HISTRIONIC PERSON NOS
30151	CHR FACTITIOUS ILLNESS
30159	HISTRIONIC PERSON NEC
3016	DEPENDENT PERSONALITY
3017	ANTISOCIAL PERSONALITY
3018	OTHER PERSONALITY DISORDERS
30181	NARCISSISTIC PERSONALITY DISORDER
30182	AVOIDANT PERSONALITY DISORDER
30183	BORDERLINE PERSONALITY DISORDER
30184	PASSIVE-AGGRESSIV PERSON
30189	PERSONALITY DISORDER NEC
3019	PERSONALITY DISORDER NOS
302	SEXUAL AND GENDER IDENTITY DISORDERS
3020	EGO-DYSTONIC SEXUAL ORIENTATION
3021	ZOOPHILIA
3022	PEDOPHILIA
3023	TRANSVESTIC FETISHISM
3024	EXHIBITIONISM
3025	TRANS-SEXUALISM
30250	TRANS-SEXUALISM NOS
30251	TRANS-SEXUALISM, ASEXUAL
30252	TRANS-SEXUAL, HOMOSEXUAL
30253	TRANS-SEX, HETEROSEXUAL

Step 3 (diagnosis of CNMP)	
Required diagnosis: 1	
Look back timeframe: 365 days	
CNMP Diagnosis Codes	
ICD-9 Code	Description
3026	GENDER IDENTITY DISORDER IN CHILDREN
3027	PSYCHOSEXUAL DYSFUNCTION
30270	PSYCHOSEXUAL DYSFUNC NOS
30271	HYPOACTIVE SEXUAL DESIRE DISORDER
30272	INHIBITED SEX EXCITEMENT
30273	FEMALE ORGASMIC DISORDER
30274	MALE ORGASMIC DISORDER
30275	PREMATURE EJACULATION
30276	DYSPAREUNIA, PSYCHOGENIC
30279	PSYCHOSEXUAL DYSFUNC NEC
3028	OTHER SPECIFIED PSYCHOSEXUAL DISORDERS
30281	FETISHISM
30282	VOYEURISM
30283	SEXUAL MASOCHISM
30284	SEXUAL SADISM
30285	GENDER IDENTITY DISORDER IN ADOLESCENTS OR ADULTS
30289	PSYCHOSEXUAL DIS NEC
3029	PSYCHOSEXUAL DIS NOS
303	ALCOHOL DEPENDENCE SYNDROME
3030	ACUTE ALCOHOLIC INTOXICATION
30300	AC ALCOHOL INTOX-UNSPEC
30301	AC ALCOHOL INTOX-CONTIN
30302	AC ALCOHOL INTOX-EPISOD
30303	AC ALCOHOL INTOX-REMISS
3039	OTHER AND UNSPECIFIED ALCOHOL DEPENDENCE
30390	ALCOH DEP NEC/NOS-UNSPEC
30391	ALCOH DEP NEC/NOS-CONTIN
30392	ALCOH DEP NEC/NOS-EPISOD
30393	ALCOH DEP NEC/NOS-REMISS
304	DRUG DEPENDENCE
3040	OPIOID TYPE DEPENDENCE
30400	OPIOID DEPENDENCE-UNSPEC
30401	OPIOID DEPENDENCE-CONTIN
30402	OPIOID DEPENDENCE-EPISOD

Step 3 (diagnosis of CNMP)	
Required diagnosis: 1	
Look back timeframe: 365 days	
CNMP Diagnosis Codes	
ICD-9 Code	Description
30403	OPIOID DEPENDENCE-REMISS
3041	SEDATIVE, HYPNOTIC OR ANXIOLYTIC DEPENDENCE
30410	SEDATIVE, HYPNOTIC OR ANXIOLYTIC DEPENDENCE UNSPECIFIED
30411	SEDATIVE, HYPNOTIC OR ANXIOLYTIC DEPENDENCE, CONTINUOUS
30412	SEDATIVE, HYPNOTIC OR ANXIOLYTIC DEPENDENCE, EPISODIC
30413	SEDATIVE, HYPNOTIC OR ANXIOLYTIC DEPENDENCE, IN REMISSION
3042	COCAINE DEPENDENCE
30420	COCAINE DEPEND-UNSPEC
30421	COCAINE DEPEND-CONTIN
30422	COCAINE DEPEND-EPISODIC
30423	COCAINE DEPEND-REMISS
3043	CANNABIS DEPENDENCE
30430	CANNABIS DEPEND-UNSPEC
30431	CANNABIS DEPEND-CONTIN
30432	CANNABIS DEPEND-EPISODIC
30433	CANNABIS DEPEND-REMISS
3044	AMPHETAMINE AND OTHER PSYCHOSTIMULANT DEPENDENCE
30440	AMPHETAMIN DEPEND-UNSPEC
30441	AMPHETAMIN DEPEND-CONTIN
30442	AMPHETAMIN DEPEND-EPISOD
30443	AMPHETAMIN DEPEND-REMISS
3045	HALLUCINOGEN DEPENDENCE
30450	HALLUCINOGEN DEP-UNSPEC
30451	HALLUCINOGEN DEP-CONTIN
30452	HALLUCINOGEN DEP-EPISOD
30453	HALLUCINOGEN DEP-REMISS
3046	OTHER SPECIFIED DRUG DEPENDENCE
30460	DRUG DEPEND NEC-UNSPEC
30461	DRUG DEPEND NEC-CONTIN
30462	DRUG DEPEND NEC-EPISODIC
30463	DRUG DEPEND NEC-IN REM
3047	COMBINATIONS OF OPIOID TYPE DRUG WITH ANY OTHER DRUG DEPENDENCE
30470	OPIOID/OTHER DEP-UNSPEC
30471	OPIOID/OTHER DEP-CONTIN

Step 3 (diagnosis of CNMP)	
Required diagnosis: 1	
Look back timeframe: 365 days	
CNMP Diagnosis Codes	
ICD-9 Code	Description
30472	OPIOID/OTHER DEP-EPISOD
30473	OPIOID/OTHER DEP-REMISS
3048	COMBINATIONS OF DRUG DEPENDENCE EXCLUDING OPIOID TYPE DRUG
30480	COMB DRUG DEP NEC-UNSPEC
30481	COMB DRUG DEP NEC-CONTIN
30482	COMB DRUG DEP NEC-EPISOD
30483	COMB DRUG DEP NEC-REMISS
3049	UNSPECIFIED DRUG DEPENDENCE
30490	DRUG DEPEND NOS-UNSPEC
30491	DRUG DEPEND NOS-CONTIN
30492	DRUG DEPEND NOS-EPISODIC
30493	DRUG DEPEND NOS-REMISS
305	NONDEPENDENT ABUSE OF DRUGS
3050	NONDEPENDENT ALCOHOL ABUSE
30500	ALCOHOL ABUSE-UNSPEC
30501	ALCOHOL ABUSE-CONTINUOUS
30502	ALCOHOL ABUSE-EPISODIC
30503	ALCOHOL ABUSE-IN REMISS
3051	TOBACCO USE DISORDER
3052	NONDEPENDENT CANNABIS ABUSE
30520	CANNABIS ABUSE-UNSPEC
30521	CANNABIS ABUSE-CONTIN
30522	CANNABIS ABUSE-EPISODIC
30523	CANNABIS ABUSE-IN REMISS
3053	NONDEPENDENT HALLUCINOGEN ABUSE
30530	HALLUCINOGEN ABUSE-UNSPEC
30531	HALLUCINOGEN ABUSE-CONTIN
30532	HALLUCINOGEN ABUSE-EPISOD
30533	HALLUCINOGEN ABUSE-REMISS
3054	NONDEPENDENT SEDATIVE, HYPNOTIC OR ANXIOLYTIC ABUSE
30540	SEDATIVE, HYPNOTIC OR ANXIOLYTIC ABUSE, UNSPECIFIED
30541	SEDATIVE, HYPNOTIC OR ANXIOLYTIC, ABUSE, CONTINUOUS
30542	SEDATIVE, HYPNOTIC, OR ANXIOLYTIC ABUSE, EPISODIC
30543	SEDATIVE, HYPNOTIC OR ANXIOLYTIC ABUSE, IN REMISSION

Step 3 (diagnosis of CNMP)	
Required diagnosis: 1	
Look back timeframe: 365 days	
CNMP Diagnosis Codes	
ICD-9 Code	Description
3055	NONDEPENDENT OPIOID ABUSE
30550	OPIOID ABUSE-UNSPEC
30551	OPIOID ABUSE-CONTINUOUS
30552	OPIOID ABUSE-EPISODIC
30553	OPIOID ABUSE-IN REMISS
3056	NONDEPENDENT COCAINE ABUSE
30560	COCAINE ABUSE-UNSPEC
30561	COCAINE ABUSE-CONTINUOUS
30562	COCAINE ABUSE-EPISODIC
30563	COCAINE ABUSE-IN REMISS
3057	NONDEPENDENT AMPHETAMINE OR RELATED ACTING SYMPATHOMIMETIC ABUSE
30570	AMPHETAMINE ABUSE-UNSPEC
30571	AMPHETAMINE ABUSE-CONTIN
30572	AMPHETAMINE ABUSE-EPISOD
30573	AMPHETAMINE ABUSE-REMISS
3058	NONDEPENDENT ANTIDEPRESSANT TYPE ABUSE
30580	ANTIDEPRESS ABUSE-UNSPEC
30581	ANTIDEPRESS ABUSE-CONTIN
30582	ANTIDEPRESS ABUSE-EPISOD
30583	ANTIDEPRESS ABUSE-REMISS
3059	NONDEPENDENT OTHER MIXED OR UNSPECIFIED DRUG ABUSE
30590	DRUG ABUSE NEC-UNSPEC
30591	DRUG ABUSE NEC-CONTIN
30592	DRUG ABUSE NEC-EPISODIC
30593	DRUG ABUSE NEC-IN REMISS
306	PHYSIOLOGICAL MALFUNCTION ARISING FROM MENTAL FACTORS
3060	PSYCHOGEN MUSCULSKEL DIS
3061	PSYCHOGENIC RESPIR DIS
3062	PSYCHOGEN CARDIOVASC DIS
3063	PSYCHOGENIC SKIN DISEASE
3064	PSYCHOGENIC GI DISEASE
3065	GENITOURINARY MALFUNCTION ARISING FROM MENTAL FACTORS
30650	PSYCHOGENIC GU DIS NOS
30651	PSYCHOGENIC VAGINISMUS

Step 3 (diagnosis of CNMP)	
Required diagnosis: 1	
Look back timeframe: 365 days	
CNMP Diagnosis Codes	
ICD-9 Code	Description
30652	PSYCHOGENIC DYSMENORRHEA
30653	PSYCHOGENIC DYSURIA
30659	PSYCHOGENIC GU DIS NEC
3066	PSYCHOGEN ENDOCRINE DIS
3067	PSYCHOGENIC SENSORY DIS
3068	PSYCHOGENIC DISORDER NEC
3069	PSYCHOGENIC DISORDER NOS
307	SPECIAL SYMPTOMS OR SYNDROMES NOT ELSEWHERE CLASSIFIED
3070	ADULT ONSET FLUENCY DISORDER
3071	ANOREXIA NERVOSA
3072	TICS
30720	TIC DISORDER NOS
30721	TRANSIENT TIC DISORDER
30722	CHRONIC MOTOR OR VOCAL TIC DISORDER
30723	TOURETTE'S DISORDER
3073	STEREOTYPIC MOVEMENT DISORDER
3074	SPECIFIC DISORDERS OF SLEEP OF NONORGANIC ORIGIN
30740	NONORGANIC SLEEP DIS NOS
30741	TRANSIENT INSOMNIA
30742	PERSISTENT INSOMNIA
30743	TRANSIENT HYPERSOMNIA
30744	PERSISTENT HYPERSOMNIA
30745	CIRCADIAN RHYTHM SLEEP DISORDER OF NONORGANIC ORIGIN
30746	SLEEP AROUSAL DISORDER
30747	SLEEP STAGE DYSFUNC NEC
30748	REPETIT SLEEP INTRUSION
30749	NONORGANIC SLEEP DIS NEC
3075	OTHER AND UNSPECIFIED DISORDERS OF EATING
30750	EATING DISORDER NOS
30751	BULIMIA NERVOSA
30752	PICA
30753	RUMINATION DISORDER
30754	PSYCHOGENIC VOMITING
30759	EATING DISORDER NEC

Step 3 (diagnosis of CNMP)	
Required diagnosis: 1	
Look back timeframe: 365 days	
CNMP Diagnosis Codes	
ICD-9 Code	Description
3076	ENURESIS
3077	ENCOPRESIS
3078	PAIN DISORDERS RELATED TO PSYCHOLOGICAL FACTORS
30780	PSYCHOGENIC PAIN NOS
30781	TENSION HEADACHE
30789	OTHER, PAIN DISORDER RELATED TO PSYCHOLOGICAL FACTORS
3079	SPECIAL SYMPTOM NEC/NOS
308	ACUTE REACTION TO STRESS
3080	STRESS REACT, EMOTIONAL
3081	STRESS REACTION, FUGUE
3082	STRESS REACT, PSYCHOMOT
3083	ACUTE STRESS REACT NEC
3084	STRESS REACT, MIXED DIS
3089	ACUTE STRESS REACT NOS
309	ADJUSTMENT REACTION
3090	ADJUSTMENT DISORDER WITH DEPRESSED MOOD
3091	PROLONG DEPRESSIVE REACT
3092	ADJUSTMENT REACTION WITH PREDOMINANT DISTURBANCE OF OTHER EMOTIONS
30921	SEPARATION ANXIETY
30922	EMANCIPATION DISORDER
30923	ACADEMIC/WORK INHIBITION
30924	ADJUSTMENT DISORDER WITH ANXIETY
30928	ADJUSTMENT DISORDER WITH MIXED ANXIETY AND DEPRESSED MOOD
30929	ADJ REACT-EMOTION NEC
3093	ADJUSTMENT DISORDER WITH DISTURBANCE OF CONDUCT
3094	ADJUSTMENT DISORDER WITH MIXED DISTURBANCE OF EMOTIONS AND CONDUCT
3098	OTHER SPECIFIED ADJUSTMENT REACTIONS
30981	POST TRAUMATIC STRESS DISORDER
30982	ADJUST REACT-PHYS SYMPT
30983	ADJUST REACT-WITHDRAWAL
30989	ADJUSTMENT REACTION NEC
3099	ADJUSTMENT REACTION NOS
310	SPECIFIC NONPSYCHOTIC MENTAL DISORDERS DUE TO ORGANIC BRAIN DAMAGE

Step 3 (diagnosis of CNMP)	
Required diagnosis: 1	
Look back timeframe: 365 days	
CNMP Diagnosis Codes	
ICD-9 Code	Description
3100	FRONTAL LOBE SYNDROME
3101	PERSONALITY CHANGE DUE TO CONDITIONS CLASSIFIED ELSEWHERE
3102	POSTCONCUSSION SYNDROME
3108	NONPSYCHOT BRAIN SYN NEC
3109	NONPSYCHOT BRAIN SYN NOS
311	DEPRESSIVE DISORDER NEC
312	DISTURBANCE OF CONDUCT NOT ELSEWHERE CLASSIFIED
3120	UNDERSOCIALIZED CONDUCT DISORDER AGGRESSIVE TYPE
31200	UNSOCIAL AGGRESS-UNSPEC
31201	UNSOCIAL AGGRESSION-MILD
31202	UNSOCIAL AGGRESSION-MOD
31203	UNSOCIAL AGGRESS-SEVERE
3121	UNDERSOCIALIZED CONDUCT DISORDER UNAGGRESSIVE TYPE
31210	UNSOCIAL UNAGGRESS-UNSP
31211	UNSOCIAL UNAGGRESS-MILD
31212	UNSOCIAL UNAGGRESS-MOD
31213	UNSOCIAL UNAGGR-SEVERE
3122	SOCIALIZED CONDUCT DISORDER
31220	SOCIAL CONDUCT DIS-UNSP
31221	SOCIAL CONDUCT DIS-MILD
31222	SOCIAL CONDUCT DIS-MOD
31223	SOCIAL CONDUCT DIS-SEV
3123	DISORDERS OF IMPULSE CONTROL NOT ELSEWHERE CLASSIFIED
31230	IMPULSE CONTROL DIS NOS
31231	PATHOLOGICAL GAMBLING
31232	KLEPTOMANIA
31233	PYROMANIA
31234	INTERMITT EXPLOSIVE DIS
31235	ISOLATED EXPLOSIVE DIS
31239	IMPULSE CONTROL DIS NEC
3124	MIX DIS CONDUCT/EMOTION
3128	OTHER SPECIFIED DISTURBANCES OF CONDUCT NOT ELSEWHERE CLASSIFIED
31281	CNDCT DSRDR CHLDHD ONST
31282	CNDCT DSRDR ADLSCNT ONST

Step 3 (diagnosis of CNMP)	
Required diagnosis: 1	
Look back timeframe: 365 days	
CNMP Diagnosis Codes	
ICD-9 Code	Description
31289	OTHER CONDUCT DISORDER
3129	CONDUCT DISTURBANCE NOS
313	DISTURBANCE OF EMOTIONS SPECIFIC TO CHILDHOOD AND ADOLESCENCE
3130	OVERANXIOUS DISORDER
3131	MISERY & UNHAPPINESS DIS
3132	SENSITIVITY SHYNESS AND SOCIAL WITHDRAWAL DISORDER SPECIFIC TO CHILDHOOD AND ADOLESCENCE
31321	SHYNESS DISORDER-CHILD
31322	INTROVERTED DIS-CHILD
31323	SELECTIVE MUTISM
3133	RELATIONSHIP PROBLEMS
3138	OTHER OR MIXED EMOTIONAL DISTURBANCES OF CHILDHOOD OR ADOLESCENCE
31381	OPPOSITIONAL DEFIANT DISORDER
31382	IDENTITY DISORDER
31383	ACADEMIC UNDERACHIEVMENT
31389	EMOTIONAL DIS CHILD NEC
3139	UNSPECIFIED EMOTIONAL DISTURBANCE OF CHILDHOOD OR ADOLESCENCE
314	HYPERKINETIC SYNDROME OF CHILDHOOD
3140	ATTENTION DEFICIT DISORDER OF CHILDHOOD
31400	ATTN DEFIC NONHYPERACT
31401	ATTN DEFICIT W HYPERACT
3141	HYPERKINET W DEVEL DELAY
3142	HYPERKINETIC CONDUCT DIS
3148	OTHER HYPERKINETIC SYND
3149	HYPERKINETIC SYND NOS
315	SPECIFIC DELAYS IN DEVELOPMENT
3150	DEVELOPMENTAL READING DISORDER
31500	READING DISORDER NOS
31501	ALEXIA
31502	DEVELOPMENTAL DYSLEXIA
31509	READING DISORDER NEC
3151	MATHEMATICS DISORDER
3152	OTH LEARNING DIFFICULTY

Step 3 (diagnosis of CNMP)	
Required diagnosis: 1	
Look back timeframe: 365 days	
CNMP Diagnosis Codes	
ICD-9 Code	Description
3153	DEVELOPMENTAL SPEECH OR LANGUAGE DISORDER
31531	EXPRESSIVE LANGUAGE DISORDER
31532	MIXED RECEPTIVE-EXPRESSIVE LANGUAGE DISORDER
31534	SPEECH AND LANGUAGE DEVELOPMENTAL DELAY DUE TO HEARING LOSS
31539	SPEECH/LANGUAGE DIS NEC
3154	DEVELOPMENTAL COORDINATION DISORDER
3155	MIXED DEVELOPMENT DIS
3158	DEVELOPMENT DELAYS NEC
3159	DEVELOPMENT DELAY NOS
316	PSYCHIC FACTOR W OTH DIS
317	MILD INTELLECTUAL DISABILITIES
318	OTHER SPECIFIED MENTAL RETARDATION
3180	MODERATE INTELLECTUAL DISABILITIES
3181	SEVERE INTELLECTUAL DISABILITIES
3182	PROFOUND INTELLECTUAL DISABILITIES
319	UNSPECIFIED INTELLECTUAL DISABILITIES
320	BACTERIAL MENINGITIS
3200	HEMOPHILUS MENINGITIS
3201	PNEUMOCOCCAL MENINGITIS
3202	STREPTOCOCCAL MENINGITIS
3203	STAPHYLOCOCC MENINGITIS
3207	MENING IN OTH BACT DIS
3208	MENINGITIS DUE TO OTHER SPECIFIED BACTERIA
32081	ANAEROBIC MENINGITIS
32082	MNINGTS GRAM-NEG BCT NEC
32089	MENINGITIS OTH SPCF BACT
3209	BACTERIAL MENINGITIS NOS
321	MENINGITIS DUE TO OTHER ORGANISMS
3210	CRYPTOCOCCAL MENINGITIS
3211	MENING IN OTH FUNGAL DIS
3212	MENING IN OTH VIRAL DIS
3213	TRYPANOSOMIASIS MENINGIT
3214	MENINGIT D/T SARCOIDOSIS
3218	MENING IN OTH NONBAC DIS

Step 3 (diagnosis of CNMP)	
Required diagnosis: 1	
Look back timeframe: 365 days	
CNMP Diagnosis Codes	
ICD-9 Code	Description
322	MENINGITIS OF UNSPECIFIED CAUSE
3220	NONPYOGENIC MENINGITIS
3221	EOSINOPHILIC MENINGITIS
3222	CHRONIC MENINGITIS
3229	MENINGITIS NOS
323	ENCEPHALITIS MYELITIS AND ENCEPHALOMYELITIS
3230	ENCEPHALIT IN VIRAL DIS
32301	ENCEPHALITIS AND ENCEPHALOMYELITIS IN VIRAL DISEASES CLASSIFIED ELSEWHERE
32302	MYELITIS IN VIRAL DISEASES CLASSIFIED ELSEWHERE
3231	ENCEPHALITIS, MYELITIS, AND ENCEPHALOMYELITIS IN RICKETTSIAL DISEASES CLASSIFIED ELSEWHERE
3232	ENCEPHALITIS, MYELITIS, AND ENCEPHALOMYELITIS IN PROTOZOAL DISEASES CLASSIFIED ELSEWHERE
3234	OTH ENCEPHALIT D/T INFECTION
32341	OTHER ENCEPHALITIS AND ENCEPHALOMYELITIS DUE TO OTHER INFECTIONS CLASSIFIED ELSEWHERE
32342	OTHER MYELITIS DUE TO OTHER INFECTIONS CLASSIFIED ELSEWHERE
3235	POSTIMMUNIZATION ENCEPHALITIS
32351	ENCEPHALITIS AND ENCEPHALOMYELITIS FOLLOWING IMMUNIZATION PROCEDURES
32352	MYELITIS FOLLOWING IMMUNIZATION PROCEDURES
3236	POSTINFECTION ENCEPHALITIS
32361	INFECTIOUS ACUTE DISSEMINATED ENCEPHALOMYELITIS (ADEM)
32362	OTHER POSTINFECTION ENCEPHALITIS AND ENCEPHALOMYELITIS
32363	POSTINFECTION MYELITIS
3237	TOXIC ENCEPHALITIS
32371	TOXIC ENCEPHALITIS AND ENCEPHALOMYELITIS
32372	TOXIC MYELITIS
3238	ENCEPHALITIS NEC
32381	OTHER CAUSES OF ENCEPHALITIS AND ENCEPHALOMYELITIS
32382	OTHER CAUSES OF MYELITIS
3239	UNSPECIFIED CAUSES OF ENCEPHALITIS, MYELITIS, AND ENCEPHALOMYELITIS
324	INTRACRANIAL AND INTRASPINAL ABSCESS
3240	INTRACRANIAL ABSCESS
3241	INTRASPINAL ABSCESS

Step 3 (diagnosis of CNMP)	
Required diagnosis: 1	
Look back timeframe: 365 days	
CNMP Diagnosis Codes	
ICD-9 Code	Description
3249	CNS ABSCESS NOS
325	PHLEBITIS INTRCRAN SINUS
326	LATE EFF CNS ABSCESS
327	ORGANIC SLEEP DISORDERS
3270	ORGANIC DISORDERS OF INITIATING AND MAINTAINING SLEEP [ORGANIC INSOMNIA]
32700	ORGANIC INSOMNIA, UNSPECIFIED.
32701	INSOMNIA DUE TO MEDICAL CONDITION CLASSIFIED ELSEWHERE.
32702	INSOMNIA DUE TO MENTAL DISORDER.
32709	OTHER ORGANIC INSOMNIA.
3271	ORGANIC DISORDER OF EXCESSIVE SOMNOLENCE [ORGANIC HYPERSOMNIA]
32710	ORGANIC HYPERSOMNIA, UNSPECIFIED.
32711	IDIOPATHIC HYPERSOMNIA WITH LONG SLEEP TIME.
32712	IDIOPATHIC HYPERSOMNIA WITHOUT LONG SLEEP TIME.
32713	RECURRENT HYPERSOMNIA.
32714	HYPERSOMNIA DUE TO MEDICAL CONDITION CLASSIFIED ELSEWHERE.
32715	HYPERSOMNIA DUE TO MENTAL DISORDER.
32719	OTHER ORGANIC HYPERSOMNIA.
3272	ORGANIC SLEEP APNEA
32720	ORGANIC SLEEP APNEA, UNSPECIFIED.
32721	PRIMARY CENTRAL SLEEP APNEA.
32722	HIGH ALTITUDE PERIODIC BREATHING.
32723	OBSTRUCTIVE SLEEP APNEA (ADULT) (PEDIATRIC).
32724	IDIOPATHIC SLEEP RELATED NONOBSTRUCTIVE ALVEOLAR HYPOVENTILATION.
32725	CONGENITAL CENTRAL ALVEOLAR HYPOVENTILATION SYNDROME.
32726	SLEEP RELATED HYPOVENTILATION/HYPOXEMIA IN CONDITIONS CLASSIFIABLE ELSEWHERE.
32727	CENTRAL SLEEP APNEA IN CONDITIONS CLASSIFIED ELSEWHERE.
32729	OTHER ORGANIC SLEEP APNEA.
3273	CIRCADIAN RHYTHM SLEEP DISORDER
32730	CIRCADIAN RHYTHM SLEEP DISORDER, UNSPECIFIED.
32731	CIRCADIAN RHYTHM SLEEP DISORDER, DELAYED SLEEP PHASE TYPE.
32732	CIRCADIAN RHYTHM SLEEP DISORDER, ADVANCED SLEEP PHASE TYPE.
32733	CIRCADIAN RHYTHM SLEEP DISORDER, IRREGULAR SLEEP-WAKE TYPE.

Step 3 (diagnosis of CNMP)	
Required diagnosis: 1	
Look back timeframe: 365 days	
CNMP Diagnosis Codes	
ICD-9 Code	Description
32734	CIRCADIAN RHYTHM SLEEP DISORDER, FREE-RUNNING TYPE.
32735	CIRCADIAN RHYTHM SLEEP DISORDER, JET LAG TYPE.
32736	CIRCADIAN RHYTHM SLEEP DISORDER, SHIFT WORK TYPE.
32737	CIRCADIAN RHYTHM SLEEP DISORDER IN CONDITIONS CLASSIFIED ELSEWHERE.
32739	OTHER CIRCADIAN RHYTHM SLEEP DISORDER.
3274	ORGANIC PARASOMNIA
32740	ORGANIC PARASOMNIA, UNSPECIFIED.
32741	CONFUSIONAL AROUSALS.
32742	REM SLEEP BEHAVIOR DISORDER.
32743	RECURRENT ISOLATED SLEEP PARALYSIS.
32744	PARASOMNIA IN CONDITIONS CLASSIFIED ELSEWHERE.
32749	OTHER ORGANIC PARASOMNIA.
3275	ORGANIC SLEEP RELATED MOVEMENT DISORDERS
32751	PERIODIC LIMB MOVEMENT DISORDER.
32752	SLEEP RELATED LEG CRAMPS.
32753	SLEEP RELATED BRUXISM.
32759	OTHER ORGANIC SLEEP RELATED MOVEMENT DISORDERS.
3278	OTHER ORGANIC SLEEP DISORDERS.
330	CEREBRAL DEGENERATIONS USUALLY MANIFEST IN CHILDHOOD
3300	LEUKODYSTROPHY
3301	CEREBRAL LIPIDOSES
3302	CEREB DEGEN IN LIPIDOSIS
3303	CEREB DEG CHLD IN OTH DIS
3308	CEREB DEGEN IN CHILD NEC
3309	CEREB DEGEN IN CHILD NOS
331	OTHER CEREBRAL DEGENERATIONS
3310	ALZHEIMER'S DISEASE
3311	PICK'S DISEASE
33111	PICK'S DISEASE
33119	OTHER FRONTOTEMPORAL DEMENTIA
3312	SENILE DEGENERAT BRAIN
3313	COMMUNICAT HYDROCEPHALUS
3314	OBSTRUCTIV HYDROCEPHALUS
3315	IDIOPATHIC NORMAL PRESSURE HYDROCEPHALUS (INPH)

Step 3 (diagnosis of CNMP)	
Required diagnosis: 1	
Look back timeframe: 365 days	
CNMP Diagnosis Codes	
ICD-9 Code	Description
3317	CEREB DEGEN IN OTH DIS
3318	OTHER CEREBRAL DEGENERATION
33181	REYE'S SYNDROME
33182	DEMENCIA WITH LEWY BODIES
33183	MILD COGNITIVE IMPAIRMENT, SO STATED
33189	CEREB DEGENERATION NEC
3319	CEREB DEGENERATION NOS
332	PARKINSON'S DISEASE
3320	PARALYSIS AGITANS
3321	SECONDARY PARKINSONISM
333	OTHER EXTRAPYRAMIDAL DISEASE AND ABNORMAL MOVEMENT DISORDERS
3330	DEGEN BASAL GANGLIA NEC
3331	TREMOR NEC
3332	MYOCLONUS
3333	TICS OF ORGANIC ORIGIN
3334	HUNTINGTON'S CHOREA
3335	CHOREA NEC
3336	GENETIC TORSION DYSTONIA
3337	SYMPTOM TORSION DYSTONIA
33371	ATHETOID CEREBRAL PALSY
33372	ACUTE DYSTONIA DUE TO DRUGS
33379	OTHER ACQUIRED TORSION DYSTONIA
3338	FRAGMENTS OF TORSION DYSTONIA
33381	BLEPHAROSPASM
33382	OROFACIAL DYSKINESIA
33383	SPASMODIC TORTICOLLIS
33384	ORGANIC WRITERS' CRAMP
33385	SUBACUTE DYSKINESIA DUE TO DRUGS
33389	FRAGM TORSION DYSTON NEC
3339	OTHER AND UNSPECIFIED EXTRAPYRAMIDAL DISEASES AND ABNORMAL MOVEMENT DISORDERS
33390	EXTRAPYRAMIDAL DIS NOS
33391	STIFF-MAN SYNDROME
33392	NEUROLEPTIC MALGNT SYND

Step 3 (diagnosis of CNMP)	
Required diagnosis: 1	
Look back timeframe: 365 days	
CNMP Diagnosis Codes	
ICD-9 Code	Description
33393	BNIGN SHUDDERING ATTACKS
33394	RESTLESS LEGS SYNDROME
33399	EXTRAPYRAMIDAL DIS NEC
334	SPINOCEREBELLAR DISEASE
3340	FRIEDREICH'S ATAXIA
3341	HERED SPASTIC PARAPLEGIA
3342	PRIMARY CEREBELLAR DEGEN
3343	CEREBELLAR ATAXIA NEC
3344	CEREBEL ATAX IN OTH DIS
3348	SPINOCEREBELLAR DIS NEC
3349	SPINOCEREBELLAR DIS NOS
335	ANTERIOR HORN CELL DISEASE
3350	WERDNIG-HOFFMANN DISEASE
3351	SPINAL MUSCULAR ATROPHY
33510	SPINAL MUSCL ATROPHY NOS
33511	KUGELBERG-WELANDER DIS
33519	SPINAL MUSCL ATROPHY NEC
3352	MOTOR NEURON DISEASE
33520	AMYOTROPHIC SCLEROSIS
33521	PROG MUSCULAR ATROPHY
33522	PROGRESSIVE BULBAR PALSY
33523	PSEUDOBULBAR PALSY
33524	PRIM LATERAL SCLEROSIS
33529	MOTOR NEURON DISEASE NEC
3358	ANT HORN CELL DIS NEC
3359	ANT HORN CELL DIS NOS
336	OTHER DISEASES OF SPINAL CORD
3360	SYRINGOMYELIA
3361	VASCULAR MYELOPATHIES
3362	COMB DEG CORD IN OTH DIS
3363	MYELOPATHY IN OTH DIS
3368	MYELOPATHY NEC
3369	SPINAL CORD DISEASE NOS
337	IDIOPATHIC PERIPHERAL AUTONOMIC NEUROPATHY

Step 3 (diagnosis of CNMP)	
Required diagnosis: 1	
Look back timeframe: 365 days	
CNMP Diagnosis Codes	
ICD-9 Code	Description
3370	IDIOPATH AUTO NEUROPATHY
33700	IDIOPATHIC PERIPHERAL AUTONOMIC NEUROPATHY, UNSPECIFIED
33701	CAROTID SINUS SYNDROME
33709	OTHER IDIOPATHIC PERIPHERAL AUTONOMIC NEUROPATHY
3371	AUT NEUROPTHY IN OTH DIS
3372	REFLEX SYMPATHETIC DYSTROPHY
33720	UNSP RFLX SYMPTH DYSTRPH
33721	RFLX SYM DYSTRPH UP LIMB
33722	RFLX SYM DYSTRPH LWR LMB
33729	RFLX SYM DYSTRPH OTH ST
3373	AUTONOMIC DYSREFLEXIA
3379	AUTONOMIC NERVE DIS NEC
338	PAIN NOT ELSEWHERE CLASSIFIED
3380	CENTRAL PAIN SYNDROME
3381	ACUTE PAIN
33811	ACUTE PAIN DUE TO TRAUMA
33812	ACUTE POST-THORACOTOMY PAIN
33818	OTHER ACUTE POSTOPERATIVE PAIN
33819	OTHER ACUTE PAIN
3382	CHRONIC PAIN
33821	CHRONIC PAIN DUE TO TRAUMA
33822	CHRONIC POST-THORACOTOMY PAIN
33828	OTHER CHRONIC POSTOPERATIVE PAIN
33829	OTHER CHRONIC PAIN
3383	NEOPLASM RELATED PAIN (ACUTE) (CHRONIC)
3384	CHRONIC PAIN SYNDROME
339	OTHER HEADACHE SYNDROMES
3390	CLUSTER HEADACHES AND OTHER TRIGEMINAL AUTONOMIC CEPHALGIAS
33900	CLUSTER HEADACHE SYNDROME, UNSPECIFIED
33901	EPISODIC CLUSTER HEADACHE
33902	CHRONIC CLUSTER HEADACHE
33903	EPISODIC PAROXYSMAL HEMICRANIA
33904	CHRONIC PAROXYSMAL HEMICRANIA
33905	SHORT LASTING UNILATERAL NEURALGIFORM HEADACHE WITH CONJUNCTIVAL INJECTION AND TEARING

Step 3 (diagnosis of CNMP)	
Required diagnosis: 1	
Look back timeframe: 365 days	
CNMP Diagnosis Codes	
ICD-9 Code	Description
33909	OTHER TRIGEMINAL AUTONOMIC CEPHALGIAS
3391	TENSION TYPE HEADACHE
33910	TENSION TYPE HEADACHE, UNSPECIFIED
33911	EPISODIC TENSION TYPE HEADACHE
33912	CHRONIC TENSION TYPE HEADACHE
3392	POSTTRAUMATIC HEADACHE
33920	POST-TRAUMATIC HEADACHE, UNSPECIFIED
33921	ACUTE POST-TRAUMATIC HEADACHE
33922	CHRONIC POST-TRAUMATIC HEADACHE
3393	DRUG INDUCED HEADACHE, NOT ELSEWHERE CLASSIFIED
3394	COMPLICATED HEADACHE SYNDROMES
33941	HEMICRANIA CONTINUA
33942	NEW DAILY PERSISTENT HEADACHE
33943	PRIMARY THUNDERCLAP HEADACHE
33944	OTHER COMPLICATED HEADACHE SYNDROME
3398	OTHER SPECIFIED HEADACHE SYNDROMES
33981	HYPNIC HEADACHE
33982	HEADACHE ASSOCIATED WITH SEXUAL ACTIVITY
33983	PRIMARY COUGH HEADACHE
33984	PRIMARY EXERTIONAL HEADACHE
33985	PRIMARY STABBING HEADACHE
33989	OTHER HEADACHE SYNDROMES
340	MULTIPLE SCLEROSIS
341	OTHER DEMYELINATING DISEASES OF CENTRAL NERVOUS SYSTEM
3410	NEUROMYELITIS OPTICA
3411	SCHILDERS DISEASE
3412	ACUTE (TRANSVERSE) MYELITIS
34120	ACUTE (TRANSVERSE) MYELITIS NOS
34121	ACUTE (TRANSVERSE) MYELITIS IN CONDITIONS CLASSIFIED ELSEWHERE
34122	IDIOPATHIC TRANSVERSE MYELITIS
3418	CNS DEMYELINATION NEC
3419	CNS DEMYELINATION NOS
342	HEMIPLEGIA AND HEMIPARESIS
3420	FLACCID HEMIPLEGIA

Step 3 (diagnosis of CNMP)	
Required diagnosis: 1	
Look back timeframe: 365 days	
CNMP Diagnosis Codes	
ICD-9 Code	Description
34200	FLCCD HMIPLGA UNSPF SIDE
34201	FLCCD HMIPLGA DOMNT SIDE
34202	FLCCD HMIPLG NONDMNT SDE
3421	SPASTIC HEMIPLEGIA
34210	SPSTC HMIPLGA UNSPF SIDE
34211	SPSTC HMIPLGA DOMNT SIDE
34212	SPSTC HMIPLG NONDMNT SDE
3428	OTHER SPECIFIED HEMIPLEGIA
34280	OT SP HMIPLGA UNSPF SIDE
34281	OT SP HMIPLGA DOMNT SIDE
34282	OT SP HMIPLG NONDMNT SDE
3429	HEMIPLEGIA UNSPECIFIED
34290	UNSP HEMIPPLGA UNSPF SIDE
34291	UNSP HEMIPPLGA DOMNT SIDE
34292	UNSP HMIPLGA NONDMNT SDE
343	INFANTILE CEREBRAL PALSY
3430	CONGENITAL DIPLEGIA
3431	CONGENITAL HEMIPLEGIA
3432	CONGENITAL QUADRIPLEGIA
3433	CONGENITAL MONOPLEGIA
3434	INFANTILE HEMIPLEGIA
3438	CEREBRAL PALSY NEC
3439	CEREBRAL PALSY NOS
344	OTHER PARALYTIC SYNDROMES
3440	QUADRAPLEGIA AND QUADRAPARESIS
34400	QUADRIPLEGIA, UNSPECIFD
34401	QUADRPLG C1-C4, COMPLETE
34402	QUADRPLG C1-C4, INCOMPLT
34403	QUADRPLG C5-C7, COMPLETE
34404	QUADRPLG C5-C7, INCOMPLT
34409	OTHER QUADRIPLEGIA
3441	PARAPLEGIA NOS
3442	DIPLEGIA OF UPPER LIMBS
3443	MONOPLEGIA OF LOWER LIMB

Step 3 (diagnosis of CNMP)	
Required diagnosis: 1	
Look back timeframe: 365 days	
CNMP Diagnosis Codes	
ICD-9 Code	Description
34430	MONPLGA LWR LMB UNSP SDE
34431	MONPLGA LWR LMB DMNT SDE
34432	MNPLG LWR LMB NONDMNT SD
3444	MONOPLGIA OF UPPER LIMB
34440	MONPLGA UPR LMB UNSP SDE
34441	MONPLGA UPR LMB DMNT SDE
34442	MNPLG UPR LMB NONDMNT SD
3445	MONOPLGIA NOS
3446	CAUDA EQUINA SYNDROME
34460	CAUDA EQUINA SYND NOS
34461	NEUROGENIC BLADDER
3448	OTHER SPECIFIED PARALYTIC SYNDROMES
34481	LOCKED-IN STATE
34489	OTH SPCF PARALYTIC SYND
3449	PARALYSIS NOS
345	EPILEPSY AND RECURRENT SEIZURES
3450	GENERALIZED NONCONVULSIVE EPILEPSY
34500	GEN NONCV EP W/O INTR EP
34501	GEN NONCONV EP W INTR EP
3451	GENERALIZED CONVULSIVE EPILEPSY
34510	GEN CNV EPIL W/O INTR EP
34511	GEN CNV EPIL W INTR EPIL
3452	PETIT MAL STATUS
3453	GRAND MAL STATUS
3454	LOCALIZATION-RELATED EPILEPSY AND EPILEPTIC SYNDROMES WITH COMPLEX PARTIAL SEIZURES
34540	LOCALIZATION-RELATED (FOCAL) (PARTIAL) EPILEPSY AND EPILEPTIC SYNDROMES WITH COMPLEX PARTIAL SEIZURES, WITHOUT MENTION OF INTRACTABLE EPILEPSY
34541	LOCALIZATION-RELATED (FOCAL) (PARTIAL) EPILEPSY AND EPILEPTIC SYNDROMES WITH COMPLEX PARTIAL SEIZURES, WITH INTRACTABLE EPILEPSY
3455	LOCALIZATION-RELATED EPILEPSY AND EPILEPTIC SYNDROMES WITH SIMPLE PARTIAL SEIZURES
34550	LOCALIZATION-RELATED (FOCAL) (PARTIAL) EPILEPSY AND EPILEPTIC SYNDROMES WITH SIMPLE PARTIAL SEIZURES, WITHOUT MENTION OF INTRACTABLE EPILEPSY

Step 3 (diagnosis of CNMP)	
Required diagnosis: 1	
Look back timeframe: 365 days	
CNMP Diagnosis Codes	
ICD-9 Code	Description
34551	LOCALIZATION-RELATED (FOCAL) (PARTIAL) EPILEPSY AND EPILEPTIC SYNDROMES WITH SIMPLE PARTIAL SEIZURES, WITH INTRACTABLE EPILEPSY
3456	INFANTILE SPASMS
34560	INF SPASM W/O INTR EPIL
34561	INF SPASM W INTRACT EPIL
3457	EPILEPSIA PARTIALIS CONTINUA
34570	EPIL PAR CONT W/O INT EP
34571	EPIL PAR CONT W INTR EPI
3458	OTHER FORMS OF EPILEPSY AND RECURRENT SEIZURES
34580	OTHER FORMS OF EPILEPSY AND RECURRENT SEIZURES, WITHOUT MENTION OF INTRACTABLE EPILEPSY
34581	OTHER FORMS OF EPILEPSY AND RECURRENT SEIZURES, WITH INTRACTABLE EPILEPSY
3459	EPILEPSY UNSPECIFIED
34590	EPILEP NOS W/O INTR EPIL
34591	EPILEPSY NOS W INTR EPIL
346	MIGRAINE
3460	MIGRAINE WITH AURA
34600	MIGRAINE WITH AURA, WITHOUT MENTION OF INTRACTABLE MIGRAINE WITHOUT MENTION OF STATUS MIGRAINOSUS
34601	MIGRAINE WITH AURA, WITH INTRACTABLE MIGRAINE, SO STATED, WITHOUT MENTION OF STATUS MIGRAINOSUS
34602	MIGRAINE WITH AURA, WITHOUT MENTION OF INTRACTABLE MIGRAINE WITH STATUS MIGRAINOSUS
34603	MIGRAINE WITH AURA, WITH INTRACTABLE MIGRAINE, SO STATED, WITH STATUS MIGRAINOSUS
3461	MIGRAINE WITHOUT AURA
34610	MIGRAINE WITHOUT AURA, WITHOUT MENTION OF INTRACTABLE MIGRAINE WITHOUT MENTION OF STATUS MIGRAINOSUS
34611	MIGRAINE WITHOUT AURA, WITH INTRACTABLE MIGRAINE, SO STATED, WITHOUT MENTION OF STATUS MIGRAINOSUS
34612	MIGRAINE WITHOUT AURA, WITHOUT MENTION OF INTRACTABLE MIGRAINE WITH STATUS MIGRAINOSUS
34613	MIGRAINE WITHOUT AURA, WITH INTRACTABLE MIGRAINE, SO STATED, WITH STATUS MIGRAINOSUS
3462	VARIANTS OF MIGRAINE NOT ELSEWHERE CLASSIFIED

Step 3 (diagnosis of CNMP)	
Required diagnosis: 1	
Look back timeframe: 365 days	
CNMP Diagnosis Codes	
ICD-9 Code	Description
34620	VARIANTS OF MIGRAINE, NOT ELSEWHERE CLASSIFIED, WITHOUT MENTION OF INTRACTABLE MIGRAINE WITHOUT MENTION OF STATUS MIGRAINOSUS
34621	VARIANTS OF MIGRAINE, NOT ELSEWHERE CLASSIFIED, WITH INTRACTABLE MIGRAINE, SO STATED, WITHOUT MENTION OF STATUS MIGRAINOSUS
34622	VARIANTS OF MIGRAINE, NOT ELSEWHERE CLASSIFIED, WITHOUT MENTION OF INTRACTABLE MIGRAINE WITH STATUS MIGRAINOSUS
34623	VARIANTS OF MIGRAINE, NOT ELSEWHERE CLASSIFIED, WITH INTRACTABLE MIGRAINE, SO STATED, WITH STATUS MIGRAINOSUS
3463	HEMIPLEGIC MIGRAINE
34630	HEMIPLEGIC MIGRAINE, WITHOUT MENTION OF INTRACTABLE MIGRAINE WITHOUT MENTION OF STATUS MIGRAINOSUS
34631	HEMIPLEGIC MIGRAINE, WITH INTRACTABLE MIGRAINE, SO STATED, WITHOUT MENTION OF STATUS MIGRAINOSUS
34632	HEMIPLEGIC MIGRAINE, WITHOUT MENTION OF INTRACTABLE MIGRAINE WITH STATUS MIGRAINOSUS
34633	HEMIPLEGIC MIGRAINE, WITH INTRACTABLE MIGRAINE, SO STATED, WITH STATUS MIGRAINOSUS
3464	MENSTRUAL MIGRAINE
34640	MENSTRUAL MIGRAINE, WITHOUT MENTION OF INTRACTABLE MIGRAINE WITHOUT MENTION OF STATUS MIGRAINOSUS
34641	MENSTRUAL MIGRAINE, WITH INTRACTABLE MIGRAINE, SO STATED, WITHOUT MENTION OF STATUS MIGRAINOSUS
34642	MENSTRUAL MIGRAINE, WITHOUT MENTION OF INTRACTABLE MIGRAINE WITH STATUS MIGRAINOSUS
34643	MENSTRUAL MIGRAINE, WITH INTRACTABLE MIGRAINE, SO STATED, WITH STATUS MIGRAINOSUS
3465	PERSISTENT MIGRAINE AURA WITHOUT CEREBRAL INFARCTION
34650	PERSISTENT MIGRAINE AURA WITHOUT CEREBRAL INFARCTION, WITHOUT MENTION OF INTRACTABLE MIGRAINE WITHOUT MENTION OF STATUS MIGRAINOSUS
34651	PERSISTENT MIGRAINE AURA WITHOUT CEREBRAL INFARCTION, WITH INTRACTABLE MIGRAINE, SO STATED, WITHOUT MENTION OF STATUS MIGRAINOSUS
34652	PERSISTENT MIGRAINE AURA WITHOUT CEREBRAL INFARCTION, WITHOUT MENTION OF INTRACTABLE MIGRAINE WITH STATUS MIGRAINOSUS
34653	PERSISTENT MIGRAINE AURA WITHOUT CEREBRAL INFARCTION, WITH INTRACTABLE MIGRAINE, SO STATED, WITH STATUS MIGRAINOSUS
3466	PERSISTENT MIGRAINE AURA WITH CEREBRAL INFARCTION

Step 3 (diagnosis of CNMP)	
Required diagnosis: 1	
Look back timeframe: 365 days	
CNMP Diagnosis Codes	
ICD-9 Code	Description
34660	PERSISTENT MIGRAINE AURA WITH CEREBRAL INFARCTION, WITHOUT MENTION OF INTRACTABLE MIGRAINE WITHOUT MENTION OF STATUS MIGRAINOSUS
34661	PERSISTENT MIGRAINE AURA WITH CEREBRAL INFARCTION, WITH INTRACTABLE MIGRAINE, SO STATED, WITHOUT MENTION OF STATUS MIGRAINOSUS
34662	PERSISTENT MIGRAINE AURA WITH CEREBRAL INFARCTION, WITHOUT MENTION OF INTRACTABLE MIGRAINE WITH STATUS MIGRAINOSUS
34663	PERSISTENT MIGRAINE AURA WITH CEREBRAL INFARCTION, WITH INTRACTABLE MIGRAINE, SO STATED, WITH STATUS MIGRAINOSUS
3467	CHRONIC MIGRAINE WITHOUT AURA
34670	CHRONIC MIGRAINE WITHOUT AURA, WITHOUT MENTION OF INTRACTABLE MIGRAINE WITHOUT MENTION OF STATUS MIGRAINOSUS
34671	CHRONIC MIGRAINE WITHOUT AURA, WITH INTRACTABLE MIGRAINE, SO STATED, WITHOUT MENTION OF STATUS MIGRAINOSUS
34672	CHRONIC MIGRAINE WITHOUT AURA, WITHOUT MENTION OF INTRACTABLE MIGRAINE WITH STATUS MIGRAINOSUS
34673	CHRONIC MIGRAINE WITHOUT AURA, WITH INTRACTABLE MIGRAINE, SO STATED, WITH STATUS MIGRAINOSUS
3468	OTHER FORMS OF MIGRAINE
34680	OTHER FORMS OF MIGRAINE, WITHOUT MENTION OF INTRACTABLE MIGRAINE WITHOUT MENTION OF STATUS MIGRAINOSUS
34681	OTHER FORMS OF MIGRAINE, WITH INTRACTABLE MIGRAINE, SO STATED, WITHOUT MENTION OF STATUS MIGRAINOSUS
34682	OTHER FORMS OF MIGRAINE, WITHOUT MENTION OF INTRACTABLE MIGRAINE WITH STATUS MIGRAINOSUS
34683	OTHER FORMS OF MIGRAINE, WITH INTRACTABLE MIGRAINE, SO STATED, WITH STATUS MIGRAINOSUS
3469	MIGRAINE UNSPECIFIED
34690	MIGRAINE, UNSPECIFIED, WITHOUT MENTION OF INTRACTABLE MIGRAINE WITHOUT MENTION OF STATUS MIGRAINOSUS
34691	MIGRAINE, UNSPECIFIED, WITH INTRACTABLE MIGRAINE, SO STATED, WITHOUT MENTION OF STATUS MIGRAINOSUS
34692	MIGRAINE, UNSPECIFIED, WITHOUT MENTION OF INTRACTABLE MIGRAINE WITH STATUS MIGRAINOSUS
34693	MIGRAINE, UNSPECIFIED, WITH INTRACTABLE MIGRAINE, SO STATED, WITH STATUS MIGRAINOSUS
347	CATAPLEXY AND NARCOLEPSY
3470	NARCOLEPSY
34700	NARCOLEPSY, WITHOUT CATAPLEXY
34701	NARCOLEPSY, WITH CATAPLEXY

Step 3 (diagnosis of CNMP)	
Required diagnosis: 1	
Look back timeframe: 365 days	
CNMP Diagnosis Codes	
ICD-9 Code	Description
3471	NARCOLEPSY IN CONDITIONS CLASSIFIED ELSEWHERE
34710	NARCOLEPSY IN CONDITIONS CLASSIFIED ELSEWHERE, WITHOUT CATAPLEXY
34711	NARCOLEPSY IN CONDITIONS CLASSIFIED ELSEWHERE, WITH CATAPLEXY
348	OTHER CONDITIONS OF BRAIN
3480	CEREBRAL CYSTS
3481	ANOXIC BRAIN DAMAGE
3482	PSEUDOTUMOR CEREBRI
3483	ENCEPHALOPATHY NOS
34830	ENCEPHALOPATHY, UNSPECIFIED
34831	METABOLIC ENCEPHALOPATHY
34839	OTHER ENCEPHALOPATHY
3484	COMPRESSION OF BRAIN
3485	CEREBRAL EDEMA
3488	BRAIN CONDITIONS NEC
3489	BRAIN CONDITION NOS
349	OTHER AND UNSPECIFIED DISORDERS OF THE NERVOUS SYSTEM
3490	LUMBAR PUNCTURE REACTION
3491	COMPLICATION CNS DEVICE
3492	DISORDER OF MENINGES NEC
3493	DURAL TEAR
34931	ACCIDENTAL PUNCTURE OR LACERATION OF DURA DURING A PROCEDURE
34939	OTHER DURAL TEAR
3498	OTHER SPECIFIED DISORDERS OF NERVOUS SYSTEM
34981	CEREBROSPINAL RHINORRHEA
34982	TOXIC ENCEPHALOPATHY
34989	CNS DISORDER NEC
3499	CNS DISORDER NOS
350	TRIGEMINAL NERVE DISORDERS
3501	TRIGEMINAL NEURALGIA
3502	ATYPICAL FACE PAIN
3508	TRIGEMINAL NERVE DIS NEC
3509	TRIGEMINAL NERVE DIS NOS
351	FACIAL NERVE DISORDERS

Step 3 (diagnosis of CNMP)	
Required diagnosis: 1	
Look back timeframe: 365 days	
CNMP Diagnosis Codes	
ICD-9 Code	Description
3510	BELL'S PALSY
3511	GENICULATE GANGLIONITIS
3518	FACIAL NERVE DIS NEC
3519	FACIAL NERVE DIS NOS
352	DISORDERS OF OTHER CRANIAL NERVES
3520	OLFACTORY NERVE DISORDER
3521	GLOSSOPHARYNG NEURALGIA
3522	GLOSSOPHAR NERVE DIS NEC
3523	PNEUMOGASTRIC NERVE DIS
3524	ACCESSORY NERVE DISORDER
3525	HYPOGLOSSAL NERVE DIS
3526	MULT CRANIAL NERVE PALSY
3529	CRANIAL NERVE DIS NOS
353	NERVE ROOT AND PLEXUS DISORDERS
3530	BRACHIAL PLEXUS LESIONS
3531	LUMBOSACRAL PLEX LESION
3532	CERVICAL ROOT LESION NEC
3533	THORACIC ROOT LESION NEC
3534	LUMBSACRAL ROOT LES NEC
3535	NEURALGIC AMYOTROPHY
3536	PHANTOM LIMB (SYNDROME)
3538	NERV ROOT/PLEXUS DIS NEC
3539	NERV ROOT/PLEXUS DIS NOS
354	MONONEURITIS OF UPPER LIMB AND MONONEURITIS MULTIPLEX
3540	CARPAL TUNNEL SYNDROME
3541	MEDIAN NERVE LESION NEC
3542	ULNAR NERVE LESION
3543	RADIAL NERVE LESION
3544	CAUSALGIA UPPER LIMB
3545	MONONEURITIS MULTIPLEX
3548	MONONEURITIS ARM NEC
3549	MONONEURITIS ARM NOS
355	MONONEURITIS OF LOWER LIMB AND UNSPECIFIED SITE
356	HEREDITARY AND IDIOPATHIC PERIPHERAL NEUROPATHY

Step 3 (diagnosis of CNMP)	
Required diagnosis: 1	
Look back timeframe: 365 days	
CNMP Diagnosis Codes	
ICD-9 Code	Description
3560	HERED PERIPH NEUROPATHY
3561	PERONEAL MUSCLE ATROPHY
3562	HERED SENSORY NEUROPATHY
3563	REFSUM'S DISEASE
3564	IDIO PROG POLYNEUROPATHY
3568	IDIO PERIPH NEURPTHY NEC
3569	IDIO PERIPH NEURPTHY NOS
357	INFLAMMATORY AND TOXIC NEUROPATHY
707	CHRONIC ULCER OF SKIN
7070	DECUBITUS ULCER
70700	PRESSURE ULCER, UNSPECIFIED SITE
70701	PRESSURE ULCER, ELBOW
70702	PRESSURE ULCER, UPPER BACK
70703	PRESSURE ULCER, LOWER BACK
70704	PRESSURE ULCER, HIP
70705	PRESSURE ULCER, BUTTOCK
70706	PRESSURE ULCER, ANKLE
70707	PRESSURE ULCER, HEEL
70709	PRESSURE ULCER, OTHER SITE
7071	ULCER OF LOWER LIMB EXCEPT PRESSURE ULCER
70710	ULCER OF LOWER LIMB NOS
70711	ULCER OF THIGH
70712	ULCER OF CALF
70713	ULCER OF ANKLE
70714	ULCER OF HEEL & MIDFOOT
70715	ULCER OTHER PART OF FOOT
70719	ULCER OTH PART LOW LIMB
7072	PRESSURE ULCER STAGES
70720	PRESSURE ULCER, UNSPECIFIED STAGE
70721	PRESSURE ULCER, STAGE I
70722	PRESSURE ULCER, STAGE II
70723	PRESSURE ULCER, STAGE III
70724	PRESSURE ULCER, STAGE IV
70725	PRESSURE ULCER, UNSTAGEABLE

Step 3 (diagnosis of CNMP)	
Required diagnosis: 1	
Look back timeframe: 365 days	
CNMP Diagnosis Codes	
ICD-9 Code	Description
7078	CHRONIC SKIN ULCER NEC
7079	CHRONIC SKIN ULCER NOS
710	DIFFUSE DISEASES OF CONNECTIVE TISSUE
7100	SYST LUPUS ERYTHEMATOSUS
7101	SYSTEMIC SCLEROSIS
7102	SICCA SYNDROME
7103	DERMATOMYOSITIS
7104	POLYMYOSITIS
7105	EOSINOPHILIA MYALGIA SND
7108	DIFF CONNECT TIS DIS NEC
7109	DIFF CONNECT TIS DIS NOS
711	ARTHROPATHY ASSOCIATED WITH INFECTIONS
7110	PYOGENIC ARTHRITIS
71100	PYOGEN ARTHRITIS-UNSPEC
71101	PYOGEN ARTHRITIS-SHLDER
71102	PYOGEN ARTHRITIS-UP/ARM
71103	PYOGEN ARTHRITIS-FOREARM
71104	PYOGEN ARTHRITIS-HAND
71105	PYOGEN ARTHRITIS-PELVIS
71106	PYOGEN ARTHRITIS-L/LEG
71107	PYOGEN ARTHRITIS-ANKLE
71108	PYOGEN ARTHRITIS NEC
71109	PYOGEN ARTHRITIS-MULT
7111	ARTHROPATHY ASSOCIATED WITH REITER'S DISEASE AND NONSPECIFIC URETHRITIS
71110	REITER ARTHRITIS-UNSPEC
71111	REITER ARTHRITIS-SHLDER
71112	REITER ARTHRITIS-UP/ARM
71113	REITER ARTHRITIS-FOREARM
71114	REITER ARTHRITIS-HAND
71115	REITER ARTHRITIS-PELVIS
71116	REITER ARTHRITIS-L/LEG
71117	REITER ARTHRITIS-ANKLE
71118	REITER ARTHRITIS NEC
71119	REITER ARTHRITIS-MULT

Step 3 (diagnosis of CNMP)	
Required diagnosis: 1	
Look back timeframe: 365 days	
CNMP Diagnosis Codes	
ICD-9 Code	Description
7112	ARTHROPATHY IN BEHCET'S SYNDROME
71120	BEHCET ARTHRITIS-UNSPEC
71121	BEHCET ARTHRITIS-SHLDER
71122	BEHCET ARTHRITIS-UP/ARM
71123	BEHCET ARTHRITIS-FOREARM
71124	BEHCET ARTHRITIS-HAND
71125	BEHCET ARTHRITIS-PELVIS
71126	BEHCET ARTHRITIS-L/LEG
71127	BEHCET ARTHRITIS-ANKLE
71128	BEHCET ARTHRITIS NEC
71129	BEHCET ARTHRITIS-MULT
7113	POSTDYSENTERIC ARTHROPATHY
71130	DYSENTER ARTHRIT-UNSPEC
71131	DYSENTER ARTHRIT-SHLDER
71132	DYSENTER ARTHRIT-UP/ARM
71133	DYSENTER ARTHRIT-FOREARM
71134	DYSENTER ARTHRIT-HAND
71135	DYSENTER ARTHRIT-PELVIS
71136	DYSENTER ARTHRIT-L/LEG
71137	DYSENTER ARTHRIT-ANKLE
71138	DYSENTER ARTHRIT NEC
71139	DYSENTER ARTHRIT-MULT
7114	ARTHROPATHY ASSOCIATED WITH OTHER BACTERIAL DISEASES
71140	BACT ARTHRITIS-UNSPEC
71141	BACT ARTHRITIS-SHLDER
71142	BACT ARTHRITIS-UP/ARM
71143	BACT ARTHRITIS-FOREARM
71144	BACT ARTHRITIS-HAND
71145	BACT ARTHRITIS-PELVIS
71146	BACT ARTHRITIS-L/LEG
71147	BACT ARTHRITIS-ANKLE
71148	BACT ARTHRITIS NEC
71149	BACT ARTHRITIS-MULT
7115	ARTHROPATHY ASSOCIATED WITH OTHER VIRAL DISEASES

Step 3 (diagnosis of CNMP)	
Required diagnosis: 1	
Look back timeframe: 365 days	
CNMP Diagnosis Codes	
ICD-9 Code	Description
71150	VIRAL ARTHRITIS-UNSPEC
71151	VIRAL ARTHRITIS-SHLDER
71152	VIRAL ARTHRITIS-UP/ARM
71153	VIRAL ARTHRITIS-FOREARM
71154	VIRAL ARTHRITIS-HAND
71155	VIRAL ARTHRITIS-PELVIS
71156	VIRAL ARTHRITIS-L/LEG
71157	VIRAL ARTHRITIS-ANKLE
71158	VIRAL ARTHRITIS NEC
71159	VIRAL ARTHRITIS-MULT
7116	ARTHROPATHY ASSOCIATED WITH MYCOSES
71160	MYCOTIC ARTHRITIS-UNSPEC
71161	MYCOTIC ARTHRITIS-SHLDER
71162	MYCOTIC ARTHRITIS-UP/ARM
71163	MYCOTIC ARTHRIT-FOREARM
71164	MYCOTIC ARTHRITIS-HAND
71165	MYCOTIC ARTHRITIS-PELVIS
71166	MYCOTIC ARTHRITIS-L/LEG
71167	MYCOTIC ARTHRITIS-ANKLE
71168	MYCOTIC ARTHRITIS NEC
71169	MYCOTIC ARTHRITIS-MULT
7117	ARTHROPATHY ASSOCIATED WITH HELMINTHIASIS
71170	HELMINTH ARTHRIT-UNSPEC
71171	HELMINTH ARTHRIT-SHLDER
71172	HELMINTH ARTHRIT-UP/ARM
71173	HELMINTH ARTHRIT-FOREARM
71174	HELMINTH ARTHRIT-HAND
71175	HELMINTH ARTHRIT-PELVIS
71176	HELMINTH ARTHRIT-L/LEG
71177	HELMINTH ARTHRIT-ANKLE
71178	HELMINTH ARTHRIT NEC
71179	HELMINTH ARTHRIT-MULT
7118	ARTHROPATHY ASSOCIATED WITH OTHER INFECTIOUS AND PARASITIC DISEASES
71180	INF ARTHRITIS NEC-UNSPEC

Step 3 (diagnosis of CNMP)	
Required diagnosis: 1	
Look back timeframe: 365 days	
CNMP Diagnosis Codes	
ICD-9 Code	Description
71181	INF ARTHRITIS NEC-SHLDER
71182	INF ARTHRITIS NEC-UP/ARM
71183	INF ARTHRIT NEC-FOREARM
71184	INF ARTHRITIS NEC-HAND
71185	INF ARTHRITIS NEC-PELVIS
71186	INF ARTHRITIS NEC-L/LEG
71187	INF ARTHRITIS NEC-ANKLE
71188	INF ARTHRIT NEC-OTH SITE
71189	INF ARTHRITIS NEC-MULT
7119	UNSPECIFIED INFECTIVE ARTHRITIS
71190	INF ARTHRITIS NOS-UNSPEC
71191	INF ARTHRITIS NOS-SHLDER
71192	INF ARTHRITIS NOS-UP/ARM
71193	INF ARTHRIT NOS-FOREARM
71194	INF ARTHRIT NOS-HAND
71195	INF ARTHRIT NOS-PELVIS
71196	INF ARTHRIT NOS-L/LEG
71197	INF ARTHRIT NOS-ANKLE
71198	INF ARTHRIT NOS-OTH SITE
71199	INF ARTHRITIS NOS-MULT
712	CRYSTAL ARTHROPATHIES
7121	CHONDROCALCINOSIS DUE TO DICALCIUM PHOSPHATE CRYSTALS
71210	DICALC PHOS CRYST-UNSPEC
71211	DICALC PHOS CRYST-SHLDER
71212	DICALC PHOS CRYST-UP/ARM
71213	DICALC PHOS CRYST-FOREARM
71214	DICALC PHOS CRYST-HAND
71215	DICALC PHOS CRYST-PELVIS
71216	DICALC PHOS CRYST-L/LEG
71217	DICALC PHOS CRYST-ANKLE
71218	DICALC PHOS CRY-SITE NEC
71219	DICALC PHOS CRYST-MULT
7122	CHONDROCALCINOSIS DUE TO PYROPHOSPHATE CRYSTALS
71220	PYROPHOSPH CRYST-UNSPEC

Step 3 (diagnosis of CNMP)	
Required diagnosis: 1	
Look back timeframe: 365 days	
CNMP Diagnosis Codes	
ICD-9 Code	Description
71221	PYROPHOSPH CRYST-SHLDER
71222	PYROPHOSPH CRYST-UP/ARM
71223	PYROPHOSPH CRYST-FOREARM
71224	PYROPHOSPH CRYST-HAND
71225	PYROPHOSPH CRYST-PELVIS
71226	PYROPHOSPH CRYST-L/LEG
71227	PYROPHOSPH CRYST-ANKLE
71228	PYROPHOS CRYST-SITE NEC
71229	PYROPHOS CRYST-MULT
7123	CHONDROCALCINOSIS CAUSE UNSPECIFIED
71230	CHONDROCALCIN NOS-UNSPEC
71231	CHONDROCALCIN NOS-SHLDER
71232	CHONDROCALCIN NOS-UP/ARM
71233	CHONDROCALC NOS-FOREARM
71234	CHONDROCALCIN NOS-HAND
71235	CHONDROCALCIN NOS-PELVIS
71236	CHONDROCALCIN NOS-L/LEG
71237	CHONDROCALCIN NOS-ANKLE
71238	CHONDROCALC NOS-OTH SITE
71239	CHONDROCALCIN NOS-MULT
7128	OTHER SPECIFIED CRYSTAL ARTHROPATHIES
71280	CRYST ARTHROP NEC-UNSPEC
71281	CRYST ARTHROP NEC-SHLDER
71282	CRYST ARTHROP NEC-UP/ARM
71283	CRYS ARTHROP NEC-FOREARM
71284	CRYST ARTHROP NEC-HAND
71285	CRYST ARTHROP NEC-PELVIS
71286	CRYST ARTHROP NEC-L/LEG
71287	CRYST ARTHROP NEC-ANKLE
71288	CRY ARTHROP NEC-OTH SITE
71289	CRYST ARTHROP NEC-MULT
7129	UNSPECIFIED CRYSTAL ARTHROPATHY
71290	CRYST ARTHROP NOS-UNSPEC
71291	CRYST ARTHROP NOS-SHLDR

Step 3 (diagnosis of CNMP)	
Required diagnosis: 1	
Look back timeframe: 365 days	
CNMP Diagnosis Codes	
ICD-9 Code	Description
71292	CRYST ARTHROP NOS-UP/ARM
71293	CRYS ARTHROP NOS-FOREARM
71294	CRYST ARTHROP NOS-HAND
71295	CRYST ARTHROP NOS-PELVIS
71296	CRYST ARTHROP NOS-L/LEG
71297	CRYST ARTHROP NOS-ANKLE
71298	CRY ARTHROP NOS-OTH SITE
71299	CRYST ARTHROP NOS-MULT
713	ARTHROPATHY ASSOCIATED WITH OTHER DISORDERS CLASSIFIED ELSEWHERE
7130	ARTHROP W ENDOCR/MET DIS
7131	ARTHROP W NONINF GI DIS
7132	ARTHROPATH W HEMATOL DIS
7133	ARTHROPATHY W SKIN DIS
7134	ARTHROPATHY W RESP DIS
7135	ARTHROPATHY W NERVE DIS
7136	ARTHROP W HYPERSEN REACT
7137	ARTHROP W SYSTEM DIS NEC
7138	ARTHROP W OTH DIS NEC
714	RHEUMATOID ARTHRITIS AND OTHER INFLAMMATORY POLYARTHROPATHIES
7140	RHEUMATOID ARTHRITIS
7141	FELTY'S SYNDROME
7142	SYST RHEUM ARTHRITIS NEC
7143	JUVENILE CHRONIC POLYARTHRITIS
71430	JUV RHEUM ARTHRITIS NOS
71431	POLYART JUV RHEUM ARTHR
71432	PAUCIART JUV RHEUM ARTHR
71433	MONOART JUV RHEUM ARTHR
7144	CHR POSTRHEUM ARTHRITIS
7148	OTHER SPECIFIED INFLAMMATORY POLYARTHROPATHIES
71481	RHEUMATOID LUNG
71489	INFLAMM POLYARTHROP NEC
7149	INFLAMM POLYARTHROP NOS
715	OSTEOARTHROSIS AND ALLIED DISORDERS

Step 3 (diagnosis of CNMP)	
Required diagnosis: 1	
Look back timeframe: 365 days	
CNMP Diagnosis Codes	
ICD-9 Code	Description
7150	OSTEOARTHRISIS GENERALIZED
71500	GENERAL OSTEOARTHRISIS
71504	GEN OSTEOARTHRIS-HAND
71509	GENERAL OSTEOARTHRISIS
7151	OSTEOARTHRISIS LOCALIZED PRIMARY
71510	LOC PRIM OSTEOART-UNSPEC
71511	LOC PRIM OSTEOART-SHLDER
71512	LOC PRIM OSTEOART-UP/ARM
71513	LOC PRIM OSTEOART-FORARM
71514	LOC PRIM OSTEOARTH-HAND
71515	LOC PRIM OSTEOART-PELVIS
71516	LOC PRIM OSTEOART-L/LEG
71517	LOC PRIM OSTEOARTH-ANKLE
71518	LOC PRIM OSTEOARTH NEC
7152	OSTEOARTHRISIS LOCALIZED SECONDARY
71520	LOC 2ND OSTEOARTH-UNSPEC
71521	LOC 2ND OSTEOARTH-SHLDER
71522	LOC 2ND OSTEOARTH-UP/ARM
71523	LOC 2ND OSTEOART-FOREARM
71524	LOC 2ND OSTEOARTHRO-HAND
71525	LOC 2ND OSTEOARTH-PELVIS
71526	LOC 2ND OSTEOARTH-L/LEG
71527	LOC 2ND OSTEOARTH-ANKLE
71528	LOC 2ND OSTEOARTHROS NEC
7153	OSTEOARTHROSIS LOCALIZED NOT SPECIFIED WHETHER PRIMARY OR SECONDARY
71530	LOC OSTEOARTH NOS-UNSPEC
71531	LOC OSTEOARTH NOS-SHLDER
71532	LOC OSTEOARTH NOS-UP/ARM
71533	LOC OSTEOART NOS-FOREARM
71534	LOC OSTEOARTH NOS-HAND
71535	LOC OSTEOARTH NOS-PELVIS
71536	LOC OSTEOARTH NOS-L/LEG
71537	LOC OSTEOARTH NOS-ANKLE
71538	LOC OSTEOAR NOS-SITE NEC

Step 3 (diagnosis of CNMP)	
Required diagnosis: 1	
Look back timeframe: 365 days	
CNMP Diagnosis Codes	
ICD-9 Code	Description
7158	OSTEOARTHROSIS INVOLVING OR WITH MENTION OF MORE THAN ONE SITE BUT NOT SPECIFIED AS GENERALIZED
71580	OSTEOARTHROSIS-MULT SITE
71589	OSTEOARTHROSIS-MULT SITE
7159	OSTEOARTHROSIS UNSPECIFIED WHETHER GENERALIZED OR LOCALIZED
71590	OSTEOARTHROS NOS-UNSPEC
71591	OSTEOARTHROS NOS-SHLDER
71592	OSTEOARTHROS NOS-UP/ARM
71593	OSTEOARTHROS NOS-FOREARM
71594	OSTEOARTHROS NOS-HAND
71595	OSTEOARTHROS NOS-PELVIS
71596	OSTEOARTHROS NOS-L/LEG
71597	OSTEOARTHROS NOS-ANKLE
71598	OSTEOARTHROS NOS-OTH SITE
716	OTHER AND UNSPECIFIED ARTHROPATHIES
7160	KASCHIN-BECK DISEASE
71600	KASCHIN-BECK DIS-UNSPEC
71601	KASCHIN-BECK DIS-SHLDER
71602	KASCHIN-BECK DIS-UP/ARM
71603	KASCHIN-BECK DIS-FOREARM
71604	KASCHIN-BECK DIS-HAND
71605	KASCHIN-BECK DIS-PELVIS
71606	KASCHIN-BECK DIS-L/LEG
71607	KASCHIN-BECK DIS-ANKLE
71608	KASCHIN-BECK DIS NEC
71609	KASCHIN-BECK DIS-MULT
7161	TRAUMATIC ARTHROPATHY
71610	TRAUM ARTHROPATHY-UNSPEC
71611	TRAUM ARTHROPATHY-SHLDER
71612	TRAUM ARTHROPATHY-UP/ARM
71613	TRAUM ARTHROPATHY-FOREARM
71614	TRAUM ARTHROPATHY-HAND
71615	TRAUM ARTHROPATHY-PELVIS
71616	TRAUM ARTHROPATHY-L/LEG
71617	TRAUM ARTHROPATHY-ANKLE

Step 3 (diagnosis of CNMP)	
Required diagnosis: 1	
Look back timeframe: 365 days	
CNMP Diagnosis Codes	
ICD-9 Code	Description
71618	TRAUM ARTHROPATHY NEC
71619	TRAUM ARTHROPATHY-MULT
7162	ALLERGIC ARTHRITIS
71620	ALLERG ARTHRITIS-UNSPEC
71621	ALLERG ARTHRITIS-SHLDER
71622	ALLERG ARTHRITIS-UP/ARM
71623	ALLERG ARTHRITIS-FOREARM
71624	ALLERG ARTHRITIS-HAND
71625	ALLERG ARTHRITIS-PELVIS
71626	ALLERG ARTHRITIS-L/LEG
71627	ALLERG ARTHRITIS-ANKLE
71628	ALLERG ARTHRITIS NEC
71629	ALLERG ARTHRITIS-MULT
7163	CLIMACTERIC ARTHRITIS
71630	CLIMACT ARTHRITIS-UNSPEC
71631	CLIMACT ARTHRITIS-SHLDER
71632	CLIMACT ARTHRITIS-UP/ARM
71633	CLIMACT ARTHRIT-FOREARM
71634	CLIMACT ARTHRITIS-HAND
71635	CLIMACT ARTHRITIS-PELVIS
71636	CLIMACT ARTHRITIS-L/LEG
71637	CLIMACT ARTHRITIS-ANKLE
71638	CLIMACT ARTHRITIS NEC
71639	CLIMACT ARTHRITIS-MULT
7164	TRANSIENT ARTHROPATHY
71640	TRANS ARTHROPATHY-UNSPEC
71641	TRANS ARTHROPATHY-SHLDER
71642	TRANS ARTHROPATHY-UP/ARM
71643	TRANS ARTHROPATH-FOREARM
71644	TRANS ARTHROPATHY-HAND
71645	TRANS ARTHROPATHY-PELVIS
71646	TRANS ARTHROPATHY-L/LEG
71647	TRANS ARTHROPATHY-ANKLE
71648	TRANS ARTHROPATHY NEC

Step 3 (diagnosis of CNMP)	
Required diagnosis: 1	
Look back timeframe: 365 days	
CNMP Diagnosis Codes	
ICD-9 Code	Description
71649	TRANS ARTHROPATHY-MULT
7165	UNSPECIFIED POLYARTHROPATHY OR POLYARTHRITIS
71650	POLYARTHRITIS NOS-UNSPEC
71651	POLYARTHRITIS NOS-SHLDER
71652	POLYARTHRITIS NOS-UP/ARM
71653	POLYARTHRIT NOS-FOREARM
71654	POLYARTHRITIS NOS-HAND
71655	POLYARTHRITIS NOS-PELVIS
71656	POLYARTHRITIS NOS-L/LEG
71657	POLYARTHRITIS NOS-ANKLE
71658	POLYARTHRIT NOS-OTH SITE
71659	POLYARTHRITIS NOS-MULT
7166	UNSPECIFIED MONOARTHRITIS
71660	MONOARTHRITIS NOS-UNSPEC
71661	MONOARTHRITIS NOS-SHLDER
71662	MONOARTHRITIS NOS-UP/ARM
71663	MONOARTHRIT NOS-FOREARM
71664	MONOARTHRITIS NOS-HAND
71665	MONOARTHRITIS NOS-PELVIS
71666	MONOARTHRITIS NOS-L/LEG
71667	MONOARTHRITIS NOS-ANKLE
71668	UNSPECIFIED MONOARTHRITIS INVOLVING OTHER SPECIFIED SITES
7168	OTHER SPECIFIED ARTHROPATHY
71680	ARTHROPATHY NEC-UNSPEC
71681	ARTHROPATHY NEC-SHLDER
71682	ARTHROPATHY NEC-UP/ARM
71683	ARTHROPATHY NEC-FOREARM
71684	ARTHROPATHY NEC-HAND
71685	ARTHROPATHY NEC-PELVIS
71686	ARTHROPATHY NEC-L/LEG
71687	ARTHROPATHY NEC-ANKLE
71688	ARTHROPATHY NEC-OTH SITE
71689	ARTHROPATHY NEC-MULT
7169	UNSPECIFIED ARTHROPATHY

Step 3 (diagnosis of CNMP)	
Required diagnosis: 1	
Look back timeframe: 365 days	
CNMP Diagnosis Codes	
ICD-9 Code	Description
71690	ARTHROPATHY NOS-UNSPEC
71691	ARTHROPATHY NOS-SHLDER
71692	ARTHROPATHY NOS-UP/ARM
71693	ARTHROPATHY NOS-FOREARM
71694	ARTHROPATHY NOS-HAND
71695	ARTHROPATHY NOS-PELVIS
71696	ARTHROPATHY NOS-L/LEG
71697	ARTHROPATHY NOS-ANKLE
71698	ARTHROPATHY NOS-OTH SITE
71699	ARTHROPATHY NOS-MULT
717	INTERNAL DERANGEMENT OF KNEE
7170	OLD BUCKET TEAR MED MEN
7171	DERANG ANT MED MENISCUS
7172	DERANG POST MED MENISCUS
7173	DERANG MED MENISCUS NEC
7174	DERANGEMENT OF LATERAL MENISCUS
71740	DERANG LAT MENISCUS NOS
71741	OLD BUCKET TEAR LAT MEN
71742	DERANGE ANT LAT MENISCUS
71743	DERANG POST LAT MENISCUS
71749	DERANG LAT MENISCUS NEC
7175	DERANGEMENT MENISCUS NEC
7176	LOOSE BODY IN KNEE
7177	CHONDROMALACIA PATELLAE
7178	OTHER INTERNAL DERANGEMENT OF KNEE
71781	OLD DISRUPT LAT COLLAT
71782	OLD DISRUPT MED COLLAT
71783	OLD DISRUPT ANT CRUCIATE
71784	OLD DISRUPT POST CRUCIAT
71785	OLD DISRUPT KNEE LIG NEC
71789	INT DERANGEMENT KNEE NEC
7179	INT DERANGEMENT KNEE NOS
718	OTHER DERANGEMENT OF JOINT
7180	ARTICULAR CARTILAGE DISORDER

Step 3 (diagnosis of CNMP)	
Required diagnosis: 1	
Look back timeframe: 365 days	
CNMP Diagnosis Codes	
ICD-9 Code	Description
71800	ARTIC CARTIL DIS-UNSPEC
71801	ARTIC CARTIL DIS-SHLDER
71802	ARTIC CARTIL DIS-UP/ARM
71803	ARTIC CARTIL DIS-FOREARM
71804	ARTIC CARTIL DIS-HAND
71805	ARTIC CARTIL DIS-PELVIS
71807	ARTIC CARTIL DIS-ANKLE
71808	ARTIC CARTIL DIS-JT NEC
71809	ARTIC CARTIL DIS-MULT JT
7181	LOOSE BODY IN JOINT
71810	LOOSE BODY-UNSPEC
71811	LOOSE BODY-SHLDER
71812	LOOSE BODY-UP/ARM
71813	LOOSE BODY-FOREARM
71814	LOOSE BODY-HAND
71815	LOOSE BODY-PELVIS
71817	LOOSE BODY-ANKLE
71818	LOOSE BODY-JOINT NEC
71819	LOOSE BODY-MULT JOINTS
7182	PATHOLOGICAL DISLOCATION
71820	PATHOL DISLOCAT-UNSPEC
71821	PATHOL DISLOCAT-SHLDER
71822	PATHOL DISLOCAT-UP/ARM
71823	PATHOL DISLOCAT-FOREARM
71824	PATHOL DISLOCAT-HAND
71825	PATHOL DISLOCAT-PELVIS
71826	PATHOL DISLOCAT-L/LEG
71827	PATHOL DISLOCAT-ANKLE
71828	PATHOL DISLOCAT-JT NEC
71829	PATHOL DISLOCAT-MULT JTS
7183	RECURRENT DISLOCATION OF JOINT
71830	RECUR DISLOCAT-UNSPEC
71831	RECUR DISLOCAT-SHLDER
71832	RECUR DISLOCAT-UP/ARM

Step 3 (diagnosis of CNMP)	
Required diagnosis: 1	
Look back timeframe: 365 days	
CNMP Diagnosis Codes	
ICD-9 Code	Description
71833	RECUR DISLOCAT-FOREARM
71834	RECUR DISLOCAT-HAND
71835	RECUR DISLOCAT-PELVIS
71836	RECUR DISLOCAT-L/LEG
71837	RECUR DISLOCAT-ANKLE
71838	RECUR DISLOCAT-JT NEC
71839	RECUR DISLOCAT-MULT JTS
7184	CONTRACTURE OF JOINT
71840	JT CONTRACTURE-UNSPEC
71841	JT CONTRACTURE-SHLDER
71842	JT CONTRACTURE-UP/ARM
71843	JT CONTRACTURE-FOREARM
71844	JT CONTRACTURE-HAND
71845	JT CONTRACTURE-PELVIS
71846	JT CONTRACTURE-L/LEG
71847	JT CONTRACTURE-ANKLE
71848	JT CONTRACTURE-JT NEC
71849	JT CONTRACTURE-MULT JTS
7185	ANKYLOSIS OF JOINT
71850	ANKYLOSIS-UNSPEC
71851	ANKYLOSIS-SHOULDER
71852	ANKYLOSIS-UPPER/ARM
71853	ANKYLOSIS-FOREARM
71854	ANKYLOSIS-HAND
71855	ANKYLOSIS-PELVIS
71856	ANKYLOSIS-LOWER/LEG
71857	ANKYLOSIS-ANKLE
71858	ANKYLOSIS-JOINT NEC
71859	ANKYLOSIS-MULT JOINTS
7186	UNSPECIFIED INTRAPELVIC PROTRUSION OF ACETABULUM
71860	PROTRUSIO ACETAB-UNSPEC
71865	PROTRUSIO ACETABULI NOS
7187	DEVELOPMENTAL DISLOCATION OF JOINT
71870	DEVELOPMENTAL DISLOCATION OF JOINT, SITE UNSPECIFIED

Step 3 (diagnosis of CNMP)	
Required diagnosis: 1	
Look back timeframe: 365 days	
CNMP Diagnosis Codes	
ICD-9 Code	Description
71871	DEVELOPMENTAL DISLOCATION OF JOINT, SHOULDER REGION
71872	DEVELOPMENTAL DISLOCATION OF JOINT, UPPER ARM
71873	DEVELOPMENTAL DISLOCATION OF JOINT, FOREARM
71874	DEVELOPMENTAL DISLOCATION OF JOINT, HAND
71875	DEVELOPMENTAL DISLOCATION OF JOINT, PELVIC REGION AND THIGH
71876	DEVELOPMENTAL DISLOCATION OF JOINT, LOWER LEG
71877	DEVELOPMENTAL DISLOCATION OF JOINT, ANKLE AND FOOT
71878	DEVELOPMENTAL DISLOCATION OF JOINT, OTHER SPECIFIED SITES
71879	DEVELOPMENTAL DISLOCATION OF JOINT, MULTIPLE SITES
7188	OTHER JOINT DERANGEMENT NOT ELSEWHERE CLASSIFIED
71880	JT DERANGMNT NEC-UNSP JT
71881	JT DERANGMENT NEC-SHLDER
71882	JT DERANGMENT NEC-UP/ARM
71883	JT DERANGMNT NEC-FOREARM
71884	JT DERANGEMENT NEC-HAND
71885	JT DERANGMENT NEC-PELVIS
71886	JT DERANGEMENT NEC-L/LEG
71887	JT DERANGEMENT NEC-ANKLE
71888	JT DERANGMENT NEC-OTH JT
71889	JT DERANGEMENT NEC-MULT
7189	UNSPECIFIED DERANGEMENT OF JOINT
71890	JT DERANGMNT NOS-UNSP JT
71891	JT DERANGMENT NOS-SHLDER
71892	JT DERANGMENT NOS-UP/ARM
71893	JT DERANGMNT NOS-FOREARM
71894	JT DERANGEMENT NOS-HAND
71895	JT DERANGMENT NOS-PELVIS
71897	JT DERANGEMENT NOS-ANKLE
71898	JT DERANGMENT NOS-OTH JT
71899	JT DERANGEMENT NOS-MULT
719	OTHER AND UNSPECIFIED DISORDERS OF JOINT
7190	EFFUSION OF JOINT
71900	JOINT EFFUSION-UNSPEC
71901	JOINT EFFUSION-SHLDER

Step 3 (diagnosis of CNMP)	
Required diagnosis: 1	
Look back timeframe: 365 days	
CNMP Diagnosis Codes	
ICD-9 Code	Description
71902	JOINT EFFUSION-UP/ARM
71903	JOINT EFFUSION-FOREARM
71904	JOINT EFFUSION-HAND
71905	JOINT EFFUSION-PELVIS
71906	JOINT EFFUSION-L/LEG
71907	JOINT EFFUSION-ANKLE
71908	JOINT EFFUSION-JT NEC
71909	JOINT EFFUSION-MULT JTS
7191	HEMARTHROSIS
71910	HEMARTHROSIS-UNSPEC
71911	HEMARTHROSIS-SHLDER
71912	HEMARTHROSIS-UP/ARM
71913	HEMARTHROSIS-FOREARM
71914	HEMARTHROSIS-HAND
71915	HEMARTHROSIS-PELVIS
71916	HEMARTHROSIS-L/LEG
71917	HEMARTHROSIS-ANKLE
71918	HEMARTHROSIS-JT NEC
71919	HEMARTHROSIS-MULT JTS
7192	VILLONODULAR SYNOVITIS
71920	VILLONOD SYNOVIT-UNSPEC
71921	VILLONOD SYNOVIT-SHLDER
71922	VILLONOD SYNOVIT-UP/ARM
71923	VILLONOD SYNOVIT-FOREARM
71924	VILLONOD SYNOVIT-HAND
71925	VILLONOD SYNOVIT-PELVIS
71926	VILLONOD SYNOVIT-L/LEG
71927	VILLONOD SYNOVIT-ANKLE
71928	VILLONOD SYNOVIT-JT NEC
71929	VILLONOD SYNOVIT-MULT JT
7193	PALINDROMIC RHEUMATISM
71930	PALINDROM RHEUM-UNSPEC
71931	PALINDROM RHEUM-SHLDER
71932	PALINDROM RHEUM-UP/ARM

Step 3 (diagnosis of CNMP)	
Required diagnosis: 1	
Look back timeframe: 365 days	
CNMP Diagnosis Codes	
ICD-9 Code	Description
71933	PALINDROM RHEUM-FOREARM
71934	PALINDROM RHEUM-HAND
71935	PALINDROM RHEUM-PELVIS
71936	PALINDROM RHEUM-L/LEG
71937	PALINDROM RHEUM-ANKLE
71938	PALINDROM RHEUM-JT NEC
71939	PALINDROM RHEUM-MULT JTS
7194	PAIN IN JOINT
71940	JOINT PAIN-UNSPEC
71941	JOINT PAIN-SHLDER
71942	JOINT PAIN-UP/ARM
71943	JOINT PAIN-FOREARM
71944	JOINT PAIN-HAND
71945	JOINT PAIN-PELVIS
71946	JOINT PAIN-L/LEG
71947	JOINT PAIN-ANKLE
71948	JOINT PAIN-JT NEC
71949	JOINT PAIN-MULT JTS
7195	STIFFNESS OF JOINT NOT ELSEWHERE CLASSIFIED
71950	JT STIFFNESS NEC-UNSPEC
71951	JT STIFFNESS NEC-SHLDER
71952	JT STIFFNESS NEC-UP/ARM
71953	JT STIFFNES NEC-FOREARM
71954	JT STIFFNESS NEC-HAND
71955	JT STIFFNESS NEC-PELVIS
71956	JT STIFFNESS NEC-L/LEG
71957	JT STIFFNESS NEC-ANKLE
71958	JT STIFFNESS NEC-OTH JT
71959	JT STIFFNESS NEC-MULT JT
7196	OTHER SYMPTOMS REFERABLE TO JOINT
71960	JOINT SYMPT NEC-UNSP JT
71961	JOINT SYMPTOM NEC-SHLDER
71962	JOINT SYMPTOM NEC-UP/ARM
71963	JOINT SYMPT NEC-FOREARM

Step 3 (diagnosis of CNMP)	
Required diagnosis: 1	
Look back timeframe: 365 days	
CNMP Diagnosis Codes	
ICD-9 Code	Description
71964	JOINT SYMPTOM NEC-HAND
71965	JOINT SYMPTOM NEC-PELVIS
71966	JOINT SYMPTOM NEC-L/LEG
71967	JOINT SYMPTOM NEC-ANKLE
71968	JOINT SYMPTOM NEC-OTH JT
71969	JOINT SYMPT NEC-MULT JTS
7197	DIFFICULTY IN WALKING
7198	OTHER SPECIFIED DISORDERS OF JOINT
71980	JOINT DIS NEC-UNSPEC
71981	JOINT DIS NEC-SHLDER
71982	JOINT DIS NEC-UP/ARM
71983	JOINT DIS NEC-FOREARM
71984	JOINT DIS NEC-HAND
71985	JOINT DIS NEC-PELVIS
71986	JOINT DIS NEC-L/LEG
71987	JOINT DIS NEC-ANKLE
71988	JOINT DIS NEC-OTH JT
71989	JOINT DIS NEC-MULT JTS
7199	UNSPECIFIED DISORDER OF JOINT
71990	JOINT DIS NOS-UNSPEC JT
71991	JOINT DIS NOS-SHLDER
71992	JOINT DIS NOS-UP/ARM
71993	JOINT DIS NOS-FOREARM
71994	JOINT DIS NOS-HAND
71995	JOINT DIS NOS-PELVIS
71996	JOINT DIS NOS-L/LEG
71997	JOINT DIS NOS-ANKLE
71998	JOINT DIS NOS-OTH JT
71999	JOINT DIS NOS-MULT JTS
720	ANKYLOSING SPONDYLITIS AND OTHER INFLAMMATORY SPONDYLOPATHIES
7200	ANKYLOSING SPONDYLITIS
7201	SPINAL ENTHESOPATHY
7202	SACROILIITIS NEC
7208	OTHER INFLAMMATORY SPONDYLOPATHIES

Step 3 (diagnosis of CNMP)	
Required diagnosis: 1	
Look back timeframe: 365 days	
CNMP Diagnosis Codes	
ICD-9 Code	Description
72081	SPONDYLOPATHY IN OTH DIS
72089	INFLAM SPONDYLOPATHY NEC
7209	INFLAM SPONDYLOPATHY NOS
721	SPONDYLOSIS AND ALLIED DISORDERS
7210	CERVICAL SPONDYLOSIS
7211	CERV SPONDYL W MYELOPATH
7212	THORACIC SPONDYLOSIS
7213	LUMBOSACRAL SPONDYLOSIS
7214	THORACIC OR LUMBAR SPONDYLOSIS WITH MYELOPATHY
72141	SPOND COMPR THOR SP CORD
72142	SPOND COMPR LUMB SP CORD
7215	KISSING SPINE
7216	ANKYL VERT HYPEROSTOSIS
7217	TRAUMATIC SPONDYLOPATHY
7218	SPINAL DISORDERS NEC
7219	SPONDYLOSIS OF UNSPECIFIED SITE
72190	SPONDYLOS NOS W/O MYELOP
72191	SPONDYLOSIS NOS W MYELOP
722	INTERVERTEBRAL DISC DISORDERS
7220	CERVICAL DISC DISPLACMNT
7221	DISPLACEMENT OF THORACIC OR LUMBAR INTERVERTEBRAL DISC WITHOUT MYELOPATHY
72210	LUMBAR DISC DISPLACEMENT
72211	THORACIC DISC DISPLACMNT
7222	DISC DISPLACEMENT NOS
7223	SCHMORL'S NODES
72230	SCHMORL'S NODES NOS
72231	SCHMORLS NODE-THORACIC
72232	SCHMORLS NODE-LUMBAR
72239	SCHMORLS NODE-REGION NEC
7224	CERVICAL DISC DEGEN
7225	DEGENERATION OF THORACIC OR LUMBAR INTERVERTEBRAL DISC
72251	THORACIC DISC DEGEN
72252	LUMB/LUMBOSAC DISC DEGEN
7226	DISC DEGENERATION NOS

Step 3 (diagnosis of CNMP)	
Required diagnosis: 1	
Look back timeframe: 365 days	
CNMP Diagnosis Codes	
ICD-9 Code	Description
7227	INTERVERTEBRAL DISC DISORDER WITH MYELOPATHY
72270	DISC DIS W MYELOPATH NOS
72271	CERV DISC DIS W MYELOPAT
72272	THOR DISC DIS W MYELOPAT
72273	LUMB DISC DIS W MYELOPAT
7228	POSTLAMINECTOMY SYNDROME
72280	POSTLAMINECTOMY SYND NOS
72281	POSTLAMINECT SYND-CERV
72282	POSTLAMINECT SYND-THORAC
72283	POSTLAMINECT SYND-LUMBAR
7229	OTHER AND UNSPECIFIED DISC DISORDER
72290	DISC DIS NEC/NOS-UNSPEC
72291	DISC DIS NEC/NOS-CERV
72292	DISC DIS NEC/NOS-THORAC
72293	DISC DIS NEC/NOS-LUMBAR
723	OTHER DISORDERS OF CERVICAL REGION
7230	CERVICAL SPINAL STENOSIS
7231	CERVICALGIA
7232	CERVICOCRANIAL SYNDROME
7233	CERVICOBRACHIAL SYNDROME
7234	BRACHIAL NEURITIS NOS
7235	TORTICOLLIS NOS
7236	PANNICULITIS OF NECK
7237	OSSIFICATION CERV LIG
7238	CERVICAL SYNDROME NEC
7239	NECK DISORDER/SYMPT NOS
724	OTHER AND UNSPECIFIED DISORDERS OF BACK
7240	SPINAL STENOSIS OTHER THAN CERVICAL
72400	SPINAL STENOSIS NOS
72401	SPINAL STENOSIS-THORACIC
72402	SPINAL STENOSIS, LUMBAR REGION, WITHOUT NEUROGENIC CLAUDICATION
72409	SPINAL STENOSIS-OTH SITE
7241	PAIN IN THORACIC SPINE
7242	LUMBAGO

Step 3 (diagnosis of CNMP)	
Required diagnosis: 1	
Look back timeframe: 365 days	
CNMP Diagnosis Codes	
ICD-9 Code	Description
7243	SCIATICA
7244	LUMBOSACRAL NEURITIS NOS
7245	BACKACHE NOS
7246	DISORDERS OF SACRUM
7247	DISORDERS OF COCCYX
72470	DISORDER OF COCCYX NOS
72471	HYPERMOBILITY OF COCCYX
72479	DISORDER OF COCCYX NEC
7248	OTHER BACK SYMPTOMS
7249	BACK DISORDER NOS
725	POLYMYALGIA RHEUMATICA
726	PERIPHERAL ENTHESOPATHIES AND ALLIED SYNDROMES
7260	ADHESIVE CAPSULIT SHLDER
7261	ROTATOR CUFF SYNDROME OF SHOULDER AND ALLIED DISORDERS
72610	ROTATOR CUFF SYND NOS
72611	CALCIF TENDINITIS SHLDER
72612	BICIPITAL TENOSYNOVITIS
72619	ROTATOR CUFF DIS NEC
7262	SHOULDER REGION DIS NEC
7263	ENTHESOPATHY OF ELBOW REGION
72630	ELBOW ENTHESOPATHY NOS
72631	MEDIAL EPICONDYLITIS
72632	LATERAL EPICONDYLITIS
72633	OLECRANON BURSITIS
72639	ELBOW ENTHESOPATHY NEC
7264	ENTHESOPATHY OF WRIST
7265	ENTHESOPATHY OF HIP
7266	ENTHESOPATHY OF KNEE
72660	ENTHESOPATHY OF KNEE NOS
72661	PES ANSERINUS TENDINITIS
72662	TIBIAL COLL LIG BURSITIS
72663	FIBULA COLL LIG BURSITIS
72664	PATELLAR TENDINITIS
72665	PREPATELLAR BURSITIS

Step 3 (diagnosis of CNMP)	
Required diagnosis: 1	
Look back timeframe: 365 days	
CNMP Diagnosis Codes	
ICD-9 Code	Description
72669	ENTHESOPATHY OF KNEE NEC
7267	ENTHESOPATHY OF ANKLE AND TARSUS
72670	ANKLE ENTHESOPATHY NOS
72671	ACHILLES TENDINITIS
72672	TIBIALIS TENDINITIS
72673	CALCANEAL SPUR
72679	ANKLE ENTHESOPATHY NEC
7268	PERIPH ENTHESOPATHY NEC
7269	UNSPECIFIED ENTHESOPATHY
72690	ENTHESOPATHY, SITE NOS
72691	EXOSTOSIS, SITE NOS
727	OTHER DISORDERS OF SYNOVIUM TENDON AND BURSA
7270	SYNOVITIS AND TENOSYNOVITIS
72700	SYNOVITIS NOS
72701	SYNOVITIS IN OTH DIS
72702	GIANT CELL TUMOR TENDON
72703	TRIGGER FINGER
72704	RADIAL STYLOID TENOSYNOV
72705	TENOSYNOV HAND/WRIST NEC
72706	TENOSYNOVITIS FOOT/ANKLE
72709	SYNOVITIS NEC
7271	BUNION
7272	OCCUPATIONAL BURSITIS
7273	BURSITIS NEC
7274	GANGLION AND CYST OF SYNOVIUM TENDON AND BURSA
72740	SYNOVIAL CYST NOS
72741	GANGLION OF JOINT
72742	GANGLION OF TENDON
72743	GANGLION NOS
72749	BURSAL CYST NEC
7275	RUPTURE OF SYNOVIUM
72750	RUPTURE OF SYNOVIUM NOS
72751	POPLITEAL SYNOVIAL CYST
72759	RUPTURE OF SYNOVIUM NEC

Step 3 (diagnosis of CNMP)	
Required diagnosis: 1	
Look back timeframe: 365 days	
CNMP Diagnosis Codes	
ICD-9 Code	Description
7276	RUPTURE OF TENDON NONTRAUMATIC
72760	NONTRAUM TENDON RUPT NOS
72761	ROTATOR CUFF RUPTURE
72762	BICEPS TENDON RUPTURE
72763	RUPT EXTEN TENDON HAND
72764	RUPT FLEXOR TENDON HAND
72765	RUPTURE QUADRICEP TENDON
72766	RUPTURE PATELLAR TENDON
72767	RUPTURE ACHILLES TENDON
72768	RUPTURE TENDON FOOT NEC
72769	NONTRAUM TENDON RUPT NEC
7278	OTHER DISORDERS OF SYNOVIUM TENDON AND BURSA
72781	CONTRACTURE OF TENDON
72782	CALCIUM DEPOSIT TENDON
72783	PLICA SYNDROME
72789	SYNOV/TEND/BURSA DIS NEC
7279	SYNOV/TEND/BURSA DIS NOS
728	DISORDERS OF MUSCLE LIGAMENT AND FASCIA
7280	INFECTIVE MYOSITIS
7281	MUSCULAR CALCIFICATION AND OSSIFICATION
72810	MUSCULAR CALCIFICAT NOS
72811	PROG MYOSITIS OSSIFICANS
72812	TRAUM MYOSITIS OSSIFICAN
72813	POSTOP HETEROTOPIC CALC
72819	MUSCULAR CALCIFICAT NEC
7282	MUSC DISUSE ATROPHY NEC
7283	MUSCLE DISORDERS NEC
7284	LAXITY OF LIGAMENT
7285	HYPERMOBILITY SYNDROME
7286	CONTRACTED PALMAR FASCIA
7287	OTHER FIBROMATOSES OF MUSCLE LIGAMENT AND FASCIA
72871	PLANTAR FIBROMATOSIS
72879	FIBROMATOSES NEC
7288	OTHER DISORDERS OF MUSCLE LIGAMENT AND FASCIA

Step 3 (diagnosis of CNMP)	
Required diagnosis: 1	
Look back timeframe: 365 days	
CNMP Diagnosis Codes	
ICD-9 Code	Description
72881	INTERSTITIAL MYOSITIS
72882	FB GRANULOMA OF MUSCLE
72883	NONTRAUM MUSCLE RUPTURE
72884	DIASTASIS OF MUSCLE
72885	SPASM OF MUSCLE
72886	NECROTIZING FASCIITIS
72887	MUSCLE WEAKNESS (GENERALIZED).
72888	RHABDOMYOLYSIS
72889	MUSCLE/LIGAMENT DIS NEC
7289	MUSCLE/LIGAMENT DIS NOS
729	OTHER DISORDERS OF SOFT TISSUES
7290	RHEUMATISM NOS
7291	MYALGIA AND MYOSITIS NOS
7292	NEURALGIA/NEURITIS NOS
7293	PANNICULITIS UNSPECIFIED
72930	PANNICULITIS, UNSP SITE
72931	HYPERTROPHY OF FAT PAD
72939	PANNICULITIS, SITE NEC
7294	FASCIITIS NOS
7295	PAIN IN LIMB
7296	OLD FB IN SOFT TISSUE
7297	NONTRAUMATIC COMPARTMENT SYNDROME
72971	NONTRAUMATIC COMPARTMENT SYNDROME OF UPPER EXTREMITY
72972	NONTRAUMATIC COMPARTMENT SYNDROME OF LOWER EXTREMITY
72973	NONTRAUMATIC COMPARTMENT SYNDROME OF ABDOMEN
72979	NONTRAUMATIC COMPARTMENT SYNDROME OF OTHER SITES
7298	OTHER MUSCULOSKELETAL SYMPTOMS REFERABLE TO LIMBS
72981	SWELLING OF LIMB
72982	CRAMP IN LIMB
72989	MUSCSKEL SYMPT LIMB NEC
7299	SOFT TISSUE DIS NEC/NOS
72990	DISORDERS OF SOFT TISSUE, UNSPECIFIED
72991	POST-TRAUMATIC SEROMA
72992	NONTRAUMATIC HEMATOMA OF SOFT TISSUE

Step 3 (diagnosis of CNMP)	
Required diagnosis: 1	
Look back timeframe: 365 days	
CNMP Diagnosis Codes	
ICD-9 Code	Description
72999	OTHER DISORDERS OF SOFT TISSUE
730	OSTEOMYELITIS PERIOSTITIS AND OTHER INFECTIONS INVOLVING BONE
7300	ACUTE OSTEOMYELITIS
73000	AC OSTEOMYELITIS-UNSPEC
73001	AC OSTEOMYELITIS-SHLDER
73002	AC OSTEOMYELITIS-UP/ARM
73003	AC OSTEOMYELITIS-FOREARM
73004	AC OSTEOMYELITIS-HAND
73005	AC OSTEOMYELITIS-PELVIS
73006	AC OSTEOMYELITIS-L/LEG
73007	AC OSTEOMYELITIS-ANKLE
73008	AC OSTEOMYELITIS NEC
73009	AC OSTEOMYELITIS-MULT
7301	CHRONIC OSTEOMYELITIS
73010	CHR OSTEOMYELITIS-UNSP
73011	CHR OSTEOMYELIT-SHLDER
73012	CHR OSTEOMYELIT-UP/ARM
73013	CHR OSTEOMYELIT-FOREARM
73014	CHR OSTEOMYELIT-HAND
73015	CHR OSTEOMYELIT-PELVIS
73016	CHR OSTEOMYELIT-L/LEG
73017	CHR OSTEOMYELIT-ANKLE
73018	CHR OSTEOMYELIT NEC
73019	CHR OSTEOMYELIT-MULT
7302	UNSPECIFIED OSTEOMYELITIS
73020	OSTEOMYELITIS NOS-UNSPEC
73021	OSTEOMYELITIS NOS-SHLDER
73022	OSTEOMYELITIS NOS-UP/ARM
73023	OSTEOMYELIT NOS-FOREARM
73024	OSTEOMYELITIS NOS-HAND
73025	OSTEOMYELITIS NOS-PELVIS
73026	OSTEOMYELITIS NOS-L/LEG
73027	OSTEOMYELITIS NOS-ANKLE
73028	OSTEOMYELIT NOS-OTH SITE

Step 3 (diagnosis of CNMP)	
Required diagnosis: 1	
Look back timeframe: 365 days	
CNMP Diagnosis Codes	
ICD-9 Code	Description
73029	OSTEOMYELITIS NOS-MULT
7303	PERIOSTITIS WITHOUT MENTION OF OSTEOMYELITIS
73030	PERIOSTITIS-UNSPEC
73031	PERIOSTITIS-SHLDER
73032	PERIOSTITIS-UP/ARM
73033	PERIOSTITIS-FOREARM
73034	PERIOSTITIS-HAND
73035	PERIOSTITIS-PELVIS
73036	PERIOSTITIS-L/LEG
73037	PERIOSTITIS-ANKLE
73038	PERIOSTITIS NEC
73039	PERIOSTITIS-MULT
7307	OSTEOPATHY RESULTING FROM POLIOMYELITIS
73070	POLIO OSTEOPATHY-UNSPEC
73071	POLIO OSTEOPATHY-SHLDER
73072	POLIO OSTEOPATHY-UP/ARM
73073	POLIO OSTEOPATHY-FOREARM
73074	POLIO OSTEOPATHY-HAND
73075	POLIO OSTEOPATHY-PELVIS
73076	POLIO OSTEOPATHY-L/LEG
73077	POLIO OSTEOPATHY-ANKLE
73078	POLIO OSTEOPATHY NEC
73079	POLIO OSTEOPATHY-MULT
7308	OTHER INFECTIONS INVOLVING BONE IN DISEASES CLASSIFIED ELSEWHERE
73080	BONE INFECT NEC-UNSPEC
73081	BONE INFECT NEC-SHLDER
73082	BONE INFECT NEC-UP/ARM
73083	BONE INFECT NEC-FOREARM
73084	BONE INFECT NEC-HAND
73085	BONE INFECT NEC-PELVIS
73086	BONE INFECT NEC-L/LEG
73087	BONE INFECT NEC-ANKLE
73088	BONE INFECT NEC-OTH SITE
73089	BONE INFECT NEC-MULT

Step 3 (diagnosis of CNMP)	
Required diagnosis: 1	
Look back timeframe: 365 days	
CNMP Diagnosis Codes	
ICD-9 Code	Description
7309	UNSPECIFIED INFECTION OF BONE
73090	BONE INFEC NOS-UNSP SITE
73091	BONE INFECT NOS-SHLDER
73092	BONE INFECT NOS-UP/ARM
73093	BONE INFECT NOS-FOREARM
73094	BONE INFECT NOS-HAND
73095	BONE INFECT NOS-PELVIS
73096	BONE INFECT NOS-L/LEG
73097	BONE INFECT NOS-ANKLE
73098	BONE INFECT NOS-OTH SITE
73099	BONE INFECT NOS-MULT
731	OSTEITIS DEFORMANS AND OSTEOPATHIES ASSOCIATED WITH OTHER DISORDERS CLASSIFIED ELSEWHERE
7310	OSTEITIS DEFORMANS NOS
7311	OSTEITIS DEF IN OTH DIS
7312	HYPERTROPH OSTEOARTHROP
7313	MAJOR OSSEOUS DEFECTS
7318	BONE INVOLV IN OTH DIS
732	OSTEOCHONDROPATHIES
7320	JUV OSTEOCHONDROS SPINE
7321	JUV OSTEOCHONDROS PELVIS
7322	FEMORAL EPIPHYSIOLYSIS
7323	JUV OSTEOCHONDROSIS ARM
7324	JUV OSTEOCHONDROSIS LEG
7325	JUV OSTEOCHONDROSIS FOOT
7326	JUV OSTEOCHONDROSIS NEC
7327	OSTEOCHONDRIT DISSECANS
7328	OSTEOCHONDROPATHY NEC
7329	OSTEOCHONDROPATHY NOS
733	OTHER DISORDERS OF BONE AND CARTILAGE



**OxyContin (Oxycodone)
High Dose
Drugs Requiring Prior Authorization**

Drugs Requiring Prior Authorization	
Label Name	GCN
OXYCODONE HCL CR 80 MG TABLET	16286
OXYCODONE HCL ER 80 MG TABLET	16286
OXYCONTIN 60 MG TABLET	99240
OXYCONTIN 80 MG TABLET	16286

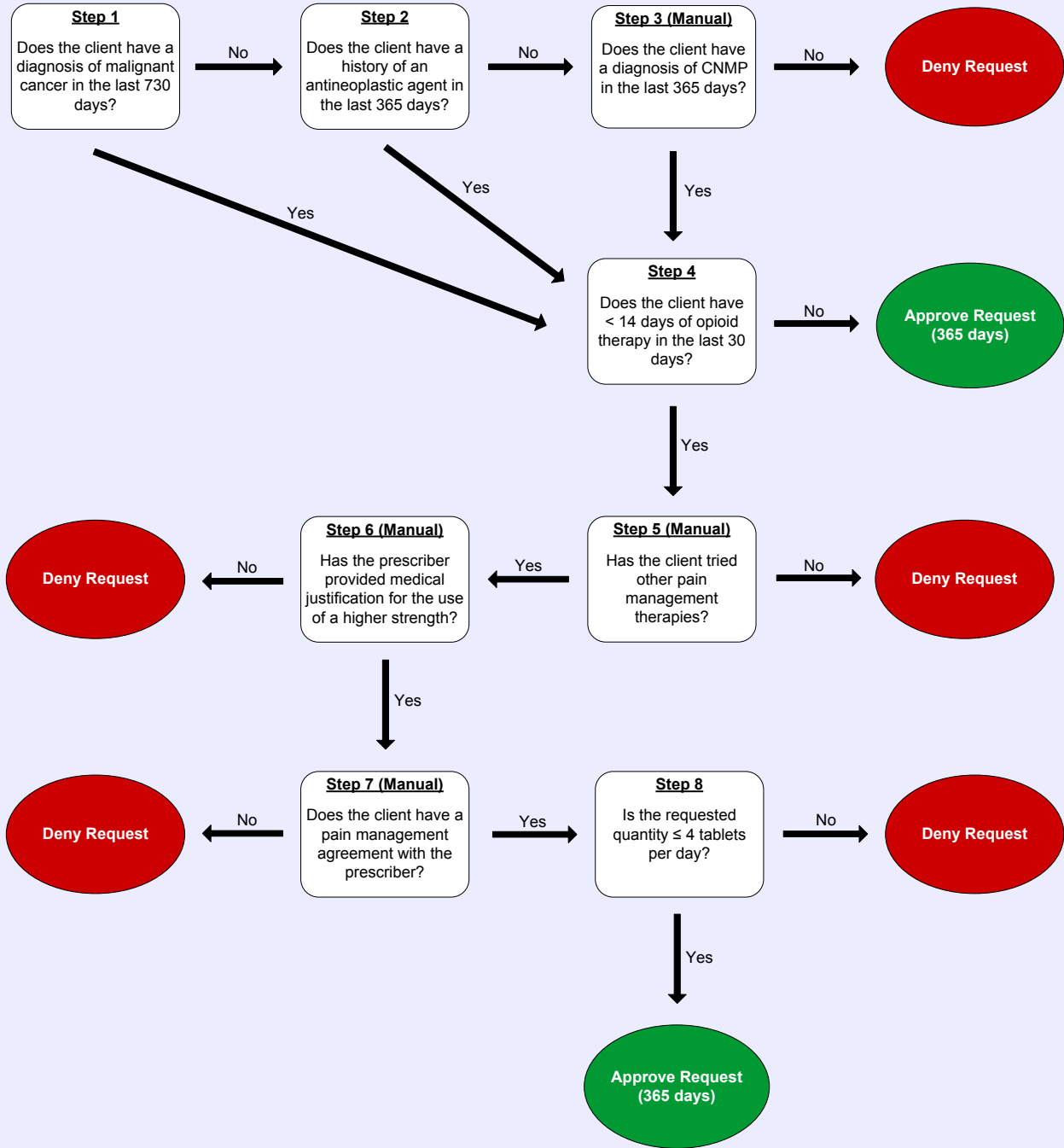


OxyContin (Oxycodone) High Dose Clinical Edit Criteria Logic

1. Does the client have a diagnosis of malignant cancer in the last 730 days?
 Yes (Go to #4)
 No (Go to #2)
2. Does the client have a history of an antineoplastic agent in the last 365 days?
 Yes (Go to #4)
 No (Go to #3)
3. Manual step – Does the client have a diagnosis of CNMP in the last 365 days?
 Yes (Go to #4)
 No (Deny)
4. Does the client have less than (<) 14 days of opioid therapy in the last 30 days?
 Yes (Go to #5)
 No (Approve – 365 days)
5. Manual step – Has the client tried other pain management therapies?
 Yes (Go to #6)
 No (Deny)
6. Manual step – Has the prescriber provided medical justification for the use of a higher strength?
 Yes (Go to #7)
 No (Deny)
7. Manual step – Does the client have a pain management agreement with the prescriber?
 Yes (Go to #8)
 No (Deny)
8. Is the requested quantity less than or equal to (\leq) 4 tablets per day?
 Yes (Approve – 365 days)
 No (Deny)



OxyContin (Oxycodone) High Dose Clinical Edit Criteria Logic Diagram





OxyContin (Oxycodone) High Dose Clinical Edit Criteria Supporting Tables

Step 1 (diagnosis of malignant cancer)

Required diagnosis: 1

Look back timeframe: 730 days

For the list of diagnosis codes that pertain to this step, see the [Malignant Cancer Diagnosis Codes](#) table in the previous "Supporting Tables" section.

Note: Click the hyperlink to navigate directly to the table.

Step 2 (history of an antineoplastic agent)

Required quantity: 1

Look back timeframe: 365 days

For the list of drug names and GCNs that pertain to this step, see the [Antineoplastic Agents](#) table in the previous "Supporting Tables" section.

Note: Click the hyperlink to navigate directly to the table.

Step 3 (diagnosis of CNMP)

Required diagnosis: 1

Look back timeframe: 365 days

For the list of diagnosis codes that pertain to this step, see the [CNMP Diagnosis Codes](#) table in the previous "Supporting Tables" section.

Note: Click the hyperlink to navigate directly to the table.

Step 4 (< 14 days of opioid therapy)

Required quantity: 1

Look back timeframe: 30 days

Label Name	GCN
ACETAMINOPHEN-COD #2 TABLET	70131
ACETAMINOPHEN-COD #3 TABLET	70134
ACETAMINOPHEN-COD #4 TABLET	70136
ACETAMINOPHEN-CODEINE ELIXIR	55401
ACTIQ 200 MCG LOZENGE	19204
ACTIQ 400 MCG LOZENGE	19206

Step 4 (< 14 days of opioid therapy)	
Required quantity: 1	
Look back timeframe: 30 days	
Label Name	GCN
ACTIQ 600 MCG LOZENGE	19191
ACTIQ 800 MCG LOZENGE	19192
ACTIQ 1,200 MCG LOZENGE	19193
ACTIQ 1,600 MCG LOZENGE	19194
ASCOMP WITH CODEINE CAPSULE	69500
AVINZA 30 MG CAPSULE	17193
AVINZA 45 MG CAPSULE	16212
AVINZA 60 MG CAPSULE	17192
AVINZA 75 MG CAPSULE	16213
AVINZA 90 MG CAPSULE	17191
AVINZA 120 MG CAPSULE	17189
BUTALB-CAFF-ACETAMINOPH-CODEIN	70140
BUTALBITAL COMP-CODEINE #3 CAP	69500
COCET TABLET	70135
CODEINE SULFATE 30 MG TABLET	16241
CODEINE SULFATE 60 MG TABLET	16242
CO-GESIC 5-500 TABLET	70331
DEMEROL 50 MG/ML AMPUL	25605
DEMEROL 50 MG/ML AMPUL	25608
DEMEROL 75 MG/1.5 ML AMPUL	25607
DEMEROL 100 MG/ML AMPUL	25626
DEMEROL 50 MG TABLET	15991
DEMEROL 100 MG TABLET	15990
DEMEROL 50 MG/ML VIAL	15962
DEMEROL 100 MG/ML VIAL	15960
DILAUDID 2 MG TABLET	16141
DILAUDID 4 MG TABLET	16143
DILAUDID 8 MG TABLET	16144
DILAUDID-5 1 MG/ML LIQUID	20251
DILAUDID-HP 10 MG/ML AMPUL	98596
DILAUDID-HP 10 MG/ML VIAL	20451
DILAUDID-HP 250 MG VIAL	16092
DOLOPHINE HCL 10 MG TABLET	16420
DURAGESIC 12 MCG/HR PATCH	24635
DURAGESIC 25 MCG/HR PATCH	19200
DURAGESIC 50 MCG/HR PATCH	19201

Step 4 (< 14 days of opioid therapy)	
Required quantity: 1	
Look back timeframe: 30 days	
Label Name	GCN
DURAGESIC 75 MCG/HR PATCH	19202
DURAGESIC 100 MCG/HR PATCH	19203
EMBEDA 20-0.8 MG CAPSULE	27526
EMBEDA 30-1.2 MG CAPSULE	27535
EMBEDA 50-2 MG CAPSULE	27536
EMBEDA 60-2.4 MG CAPSULE	27537
EMBEDA 80-3.2 MG CAPSULE	27538
EMBEDA 100-4 MG CAPSULE	27539
ENDOCET 5-325 TABLET	70491
ENDOCET 7.5-325 MG TABLET	14965
ENDOCET 7.5-500 MG TABLET	50756
ENDOCET 10-325 MG TABLET	14966
ENDOCET 10-650 MG TABLET	50766
ENDODAN 4.83-325 MG TABLET	26836
ETH-OXYDOSE 20 MG/ML SOLUTION	16281
EXALGO ER 8 MG TABLET	22056
EXALGO ER 12 MG TABLET	28427
EXALGO ER 16 MG TABLET	22098
FENTANYL 12 MCG/HR PATCH	24635
FENTANYL 25 MCG/HR PATCH	19200
FENTANYL 50 MCG/HR PATCH	19201
FENTANYL 75 MCG/HR PATCH	19202
FENTANYL 100 MCG/HR PATCH	19203
FENTANYL CITRATE OTFC 200 MCG	19204
FENTANYL CITRATE OTFC 400 MCG	19206
FENTANYL CITRATE OTFC 600 MCG	19191
FENTANYL CITRATE OTFC 800 MCG	19192
FENTANYL CIT OTFC 1,200 MCG	19193
FENTANYL CIT OTFC 1,600 MCG	19194
FENTORA 100 MCG BUCCAL TABLET	97280
FENTORA 200 MCG BUCCAL TABLET	97281
FENTORA 400 MCG BUCCAL TABLET	97283
FENTORA 600 MCG BUCCAL TABLET	97284
FENTORA 800 MCG BUCCAL TABLET	97285
FIORICET-COD 30-50-325-40 CAP	70140
FIORINAL-COD 30-50-325-40 CAP	69500

Step 4 (< 14 days of opioid therapy)	
Required quantity: 1	
Look back timeframe: 30 days	
Label Name	GCN
HYCET 7.5 MG-325 MG/15 ML SOL	21146
HYCODAN TABLET	96041
HYDROCODON-ACETAMINOPH 2.5-500	70338
HYDROCODON-ACETAMINOPHEN 5-300	26470
HYDROCODON-ACETAMINOPHEN 5-325	12486
HYDROCODON-ACETAMINOPHEN 5-500	70331
HYDROCODON-ACETAMINOPH 7.5-300	26709
HYDROCODON-ACETAMINOPH 7.5-325	12488
HYDROCODON-ACETAMINOPH 7.5-500	70339
HYDROCODON-ACETAMINOPH 7.5-650	70333
HYDROCODON-ACETAMINOPH 7.5-750	70335
HYDROCODON-ACETAMINOPHN 10-300	22929
HYDROCODON-ACETAMINOPHN 10-325	70330
HYDROCODON-ACETAMINOPHN 10-500	70334
HYDROCODON-ACETAMINOPHN 10-650	70332
HYDROCODON-ACETAMINOPHN 10-660	70363
HYDROCODON-ACETAMINOPHN 10-750	85319
HYDROCODONE BT-IBUPROFEN TAB	63101
HYDROCODONE-ACETAMINOPHEN SOLN	20906
HYDROCODONE-HOMATROPINE SYRUP	13973
HYDROGESIC 5-500 MG CAPSULE	70320
HYDROMET SYRUP	13973
HYDROMORPHONE 2 MG TABLET	16141
HYDROMORPHONE 3 MG SUPPOS	16130
HYDROMORPHONE 4 MG TABLET	16143
HYDROMORPHONE 8 MG TABLET	16144
HYDROMORPHONE 10 MG/ML VIAL	20451
IBUDONE 5-200 MG TABLET	22678
IBUDONE 10-200 MG TABLET	99371
INFUMORPH 10 MG/ML AMPUL P-F	19829
INFUMORPH 25 MG/ML AMPUL P-F	19843
KADIAN ER 10 MG CAPSULE	26490
KADIAN ER 20 MG CAPSULE	26492
KADIAN ER 30 MG CAPSULE	97534
KADIAN ER 50 MG CAPSULE	26493
KADIAN ER 60 MG CAPSULE	97535

Step 4 (< 14 days of opioid therapy)	
Required quantity: 1	
Look back timeframe: 30 days	
Label Name	GCN
KADIAN ER 80 MG CAPSULE	97508
KADIAN ER 100 MG CAPSULE	26494
KADIAN ER 200 MG CAPSULE	98135
LORCET 10-650 TABLET	70332
LORCET PLUS TABLET	70333
LORTAB 5-500 TABLET	70331
LORTAB 7.5-500 TABLET	70339
LORTAB 10-500 TABLET	70334
LORTAB ELIXIR	20906
MEPERIDINE 50 MG/5 ML SOLUTION	15980
MEPERIDINE 50 MG TABLET	15991
MEPERIDINE 100 MG TABLET	15990
MEPERIDINE 25 MG/ML VIAL	25613
MEPERIDINE 50 MG/ML VIAL	25609
MEPERIDINE 100 MG/ML VIAL	25627
MEPERITAB 50 MG TABLET	15991
MEPERITAB 100 MG TABLET	15990
METHADONE 10 MG/ML ORAL CONC	16415
METHADONE 5 MG/5 ML SOLUTION	16400
METHADONE 10 MG/5 ML SOLUTION	16410
METHADONE 40 MG TABLET DISPR	16423
METHADONE HCL 5 MG TABLET	16422
METHADONE HCL 10 MG TABLET	16420
METHADONE INTENSOL 10 MG/ML	16415
METHADOSE 10 MG/ML ORAL CONC	16415
METHADOSE 10 MG TABLET	16420
METHADOSE 40 MG TABLET DISPR	16423
MORPHINE 15 MG/ML VIAL	16041
MORPHINE SULF 10 MG/5 ML SOLN	16060
MORPHINE SULF 20 MG/5 ML SOLN	16062
MORPHINE SULF 100 MG/5 ML SOLN	16063
MORPHINE SULF CR 15 MG TABLET	16643
MORPHINE SULF CR 30 MG TABLET	16640
MORPHINE SULF CR 60 MG TABLET	16641
MORPHINE SULF CR 100 MG TABLET	16642
MORPHINE SULF CR 200 MG TABLET	16078

Step 4 (< 14 days of opioid therapy)	
Required quantity: 1	
Look back timeframe: 30 days	
Label Name	GCN
MORPHINE SULF ER 15 MG TABLET	16643
MORPHINE SULF ER 30 MG TABLET	16640
MORPHINE SULF ER 60 MG TABLET	16641
MORPHINE SULF ER 100 MG TABLET	16642
MORPHINE SULF ER 200 MG TABLET	16078
MORPHINE SULFATE 50 MG/ML VIAL	16277
MORPHINE SULFATE IR 15 MG TAB	16070
MORPHINE SULFATE IR 30 MG TAB	16071
MS CONTIN 15 MG TABLET	16643
MS CONTIN 60 MG TABLET	16641
MS CONTIN 100 MG TABLET	16642
MS CONTIN 200 MG TABLET	16078
MS CONTIN CR 30 MG TABLET	16640
NORCO 10-325 TABLET	70330
NUCYNTA 50 MG TABLET	26163
NUCYNTA 75 MG TABLET	26164
NUCYNTA 100 MG TABLET	26165
ONSOLIS 200 MCG SOLUBLE FILM	27545
ONSOLIS 400 MCG SOLUBLE FILM	27546
ONSOLIS 600 MCG SOLUBLE FILM	27547
ONSOLIS 800 MCG SOLUBLE FILM	27548
ONSOLIS 1,200 MCG SOLUBLE FILM	27549
OPANA 5 MG TABLET	27243
OPANA 10 MG TABLET	27244
OPANA ER 5 MG TABLET	27247
OPANA ER 7.5 MG TABLET	99492
OPANA ER 10 MG TABLET	27248
OPANA ER 15 MG TABLET	99493
OPANA ER 20 MG TABLET	27249
OPANA ER 30 MG TABLET	99494
OPANA ER 40 MG TABLET	27253
ORAMORPH SR 15 MG TABLET	16643
ORAMORPH SR 30 MG TABLET	16640
ORAMORPH SR 60 MG TABLET	16641
ORAMORPH SR 100 MG TABLET	16642
OXYCODON-ACETAMINOPHEN 2.5-325	70492

Step 4 (< 14 days of opioid therapy)	
Required quantity: 1	
Look back timeframe: 30 days	
Label Name	GCN
OXYCODON-ACETAMINOPHEN 7.5-325	14965
OXYCODON-ACETAMINOPHEN 7.5-500	50756
OXYCODONE CONC 20 MG/ML SOLN	16281
OXYCODONE HCL 5 MG CAPSULE	16285
OXYCODONE HCL 5 MG/5 ML SOL	16280
OXYCODONE HCL 20 MG/ML SOLN	16281
OXYCODONE HCL 5 MG TABLET	16290
OXYCODONE HCL 10 MG TABLET	16291
OXYCODONE HCL 15 MG TABLET	20091
OXYCODONE HCL 20 MG TABLET	21194
OXYCODONE HCL 30 MG TABLET	20092
OXYCODONE-ACETAMINOPHEN 5-325	70491
OXYCODONE-ACETAMINOPHEN 5-500	70500
OXYCODONE-ACETAMINOPHEN 10-325	14966
OXYCODONE-ACETAMINOPHEN 10-650	50766
OXYCODONE-ASA 4.5-0.38-325 TAB	70481
OXYCODONE-IBUPROFEN 5-400 TAB	23827
OXYCONTIN 10 MG TABLET	16282
OXYCONTIN 15 MG TABLET	99238
OXYCONTIN 20 MG TABLET	16283
OXYCONTIN 30 MG TABLET	99239
OXYCONTIN 40 MG TABLET	16284
OXYMORPHONE HCL 5 MG TABLET	27243
OXYMORPHONE HCL 10 MG TABLET	27244
PERCOCET 2.5-325 MG TABLET	70492
PERCOCET 5-325 MG TABLET	70491
PERCOCET 7.5-325 MG TABLET	14965
PERCOCET 7.5-500 MG TABLET	50756
PERCOCET 10-325 MG TABLET	14966
PERCOCET 10-650 MG TABLET	50766
PERCODAN TABLET	26836
POLYGESIC 5/500 CAPSULE	70320
PRIMALEV 2.5-300 MG TABLET	26953
PRIMLEV 5-300 MG TABLET	26954
PRIMLEV 7.5-300 MG TABLET	26955
PRIMLEV 10-300 MG TABLET	26956

Step 4 (< 14 days of opioid therapy)	
Required quantity: 1	
Look back timeframe: 30 days	
Label Name	GCN
PROPOXYPH-ACETAMINOPHEN 50-325	70933
REPREXAIN 2.5-200 MG TABLET	16279
REPREXAIN 5-200 MG TABLET	22678
REPREXAIN 7.5-200 MG TABLET	63101
REPREXAIN 10-200 MG TABLET	99371
ROXICET 5-500 CAPLET	70490
ROXICET 5-325 ORAL SOLUTION	70470
ROXICET 5-325 TABLET	70491
ROXICODONE 5 MG/5 ML SOLUTION	16280
ROXICODONE 5 MG TABLET	16290
ROXICODONE 15 MG TABLET	20091
ROXICODONE 30 MG TABLET	20092
ROXICODONE INTENSOL 20 MG/ML	16281
TYLENOL WITH CODEINE #3 TABLET	70134
TYLENOL WITH CODEINE #4 TABLET	70136
TYLOX 5-500 CAPSULE	70500
VICODIN 5-500 TABLET	70331
VICODIN ES 7.5-750 MG TABLET	70335
VICODIN HP TABLET	70363
VICOPROFEN 200-7.5 MG TAB	63101
XODOL 5-300 TABLET	26470
XODOL 7.5-300 MG TABLET	26709
XODOL 10-300 TABLET	22929
XOLOX 10-500 MG TABLET	27245
ZAMICET SOLUTION	99967
ZYDONE 5-400 MG TABLET	70401
ZYDONE 7.5-400 MG TABLET	70402
ZYDONE 10-400 MG TABLET	70403



OxyContin (Oxycodone)

Clinical Edit Criteria References

1. OxyContin® [package insert]. New York, NY: Purdue Pharma; 1996.
2. Drug facts and comparisons. 2002.
3. Lacy CF, Armstrong LL, Goldman MP, Lance LL. Drug information handbook, 2001-2002. Hudson, OH: Lexicomp; 2001.
4. Physicians' desk reference. 56th ed. Montvale, NJ: Medical Economics Company; 2002.
5. Opioids.com. Narcotic analgesics: OxyContin. Available at <http://opioids.com/oxycodone/prescribe.html>.
6. Roth S, Fleischmann R, Burch F, et al. Around-the-clock, controlled-release oxycodone therapy for osteoarthritis-related pain: Placebo-controlled trial and long-term evaluation. Arch Intern Med 2000; 160(6):853-60.
7. Hart A, Hopkins C. ICD-9-CM expert for physicians, vol. 1-2. 6th ed. 2002.

Publication History

The Publication History records the publication iterations and revisions to this document. Notes for the *most current revision* are also provided in the **Revision Notes** on the first page of this document.

Publication Date	Notes
01/31/2011	Initial publication and posting to website
04/06/2012	<ul style="list-style-type: none">• Clarified sections specifying the dosage form/strengths of OxyContin (oxycodone) requiring prior authorization• In the "Clinical Edit Criteria Logic" section for high dose OxyContin, clarified wording associated with step 1• In each "Clinical Edit Supporting Tables" section, revised tables to specify the diagnosis codes pertinent to steps 1 and 3 of the logic diagram• In the "Clinical Edit Supporting Tables" section for low dose OxyContin, revised tables to specify the drug names and GCNs pertinent to step 2 of the logic diagram• In the "Clinical Edit Supporting Tables" section for high dose OxyContin, revised tables to specify the drug names and GCNs pertinent to steps 2 and 4 of the logic diagram