

Texas Prior Authorization Program Clinical Edit Criteria

Drug/Drug Class

Propylthiouracil

Clinical Edit Information Included in this Document

- **Drugs requiring prior authorization:** the list of drugs requiring prior authorization for this clinical edit
- **Prior authorization criteria logic:** a description of how the prior authorization request will be evaluated against the clinical edit criteria rules
- **Logic diagram:** a visual depiction of the clinical edit criteria logic
- **Supporting tables:** a collection of information associated with the steps within the criteria (diagnosis codes, procedure codes, and therapy codes); provided when applicable
- **References:** clinical publications and sources relevant to this clinical edit

Note: Click the hyperlink to navigate directly to that section.

Revision Notes

- Added a new section to specify the drugs requiring prior authorization
- In the “Clinical Edit Supporting Tables” section, revised table to specify the diagnosis codes pertinent to step 2 of the logic diagram
- Modified the criteria logic and logic diagram to identify the steps that are executed manually



Propylthiouracil

Drugs Requiring Prior Authorization

Drugs Requiring Prior Authorization	
Label Name	GCN
PROPYLTHIOURACIL 50 MG TABLET	26391



Propylthiouracil

Clinical Edit Criteria Logic

1. Is the client less than or equal (\leq) to 18 years of age?
 Yes (Go to #2)
 No (Approve – 365 days)

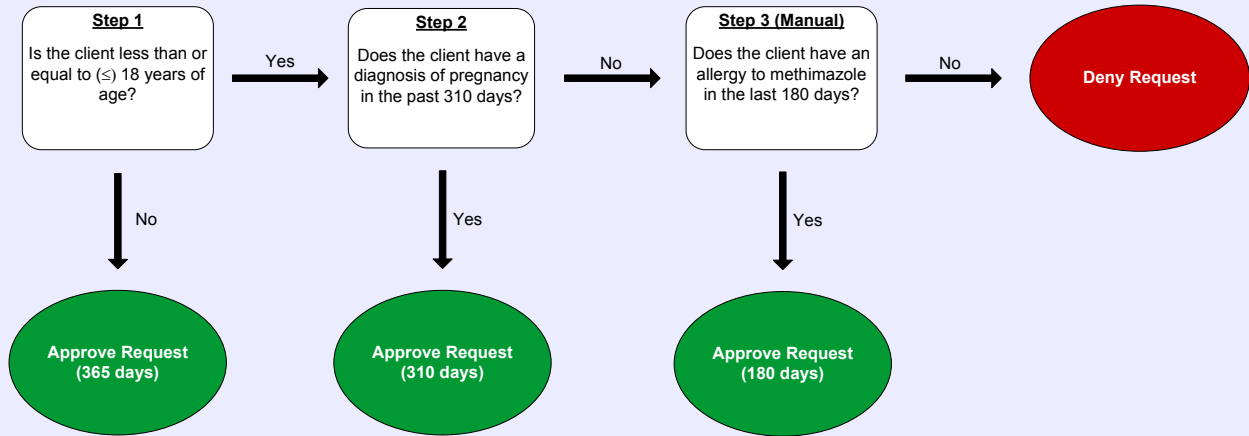
2. Does the client have a diagnosis of pregnancy in the past 310 days?
 Yes (Approve – 310 days)
 No (Go to #3)

3. Manual step – Does the client have an allergy to methimazole in the last 180 days?
 Yes (Approve – 180 days)
 No (Deny)



Propylthiouracil

Clinical Edit Criteria Logic Diagram





Propylthiouracil

Clinical Edit Criteria Supporting Tables

Step 2 (diagnosis of pregnancy) Required diagnosis: 1 Look back timeframe: 310 days	
ICD-9 Code	Description
37133	RUPTURE DESCOMET MEMBRAN
37913	EQUATORIAL STAPHYLOMA
64003	THREATEN ABORT-ANTEPART
64083	HEM EARLY PG NEC-ANTEPAR
64093	HEM EARLY PREG-ANTEPART
64103	PLACENTA PREVIA-ANTEPART
64113	PLACEN PREV HEM-ANTEPART
64123	PREM SEPAR PLAC-ANTEPART
64133	COAG DEF HEMORR-ANTEPART
64183	ANTEPART HEM NEC-ANTEPAR
64193	ANTEPART HEM NOS-ANTEPAR
64200	ESSEN HYPERTEN PREG-UNSP
64203	ESSEN HYPERTEN-ANTEPART
64210	RENAL HYPERTEN PREG-UNSP
64213	RENAL HYPERTEN-ANTEPART
64230	TRANS HYPERTEN PREG-UNSP
64233	TRANS HYPERTEN-ANTEPART
64240	MILD/NOS PREECLAMP-UNSP
64243	MILD/NOS PREECLAMP-ANTEP
64250	SEVERE PREECLAMP-UNSPEC
64253	SEV PREECLAMP-ANTEPARTUM
64260	ECLAMPSIA-UNSPECIFIED
64263	ECLAMPSIA-ANTEPARTUM
64270	TOX W OLD HYPERTEN-UNSP
64273	TOX W OLD HYPER-ANTEPART
64290	HYPERTEN PREG NOS-UNSPEC
64293	HYPERTENS NOS-ANTEPARTUM
6430	MILD HYPEREMESIS GRAVIDARUM
64303	MILD HYPEREMESIS-ANTEPAR
64310	HYPEREM W METAB DIS-UNSP
64313	HYPEREM W METAB-ANTEPART
64320	LATE VOMIT OF PREG-UNSP
64323	LATE VOMIT PREG-ANTEPART
64380	VOMIT COMPL PREG-UNSPEC

Step 2 (diagnosis of pregnancy)	
Required diagnosis: 1	
Look back timeframe: 310 days	
ICD-9 Code	Description
64383	VOMIT COMPL PREG-ANTEPAR
64390	VOMIT OF PREG NOS-UNSPEC
64393	VOMIT OF PG NOS-ANTEPART
64400	THREAT PREM LABOR-UNSPEC
64403	THRT PREM LABOR-ANTEPART
64410	THREAT LABOR NEC-UNSPEC
64413	THREAT LABOR NEC-ANTEPAR
64513	POST TERM PREG-ANTEPAR
64523	PROLONGED PREG-ANTEPAR
64603	PAPYRACEOUS FET-ANTEPAR
64610	EDEMA IN PREG-UNSPEC
64613	EDEMA IN PREG-ANTEPARTUM
64620	RENAL DIS PREG NOS-UNSP
64623	RENAL DIS NOS-ANTEPARTUM
64630	RECURRENT PREGNANCY LOSS, UNSPECIFIED AS TO EPISODE OF CARE OR NOT APPLICABLE
64633	RECURRENT PREGNANCY LOSS, ANTEPARTUM CONDITION OR COMPLICATION
64640	NEURITIS OF PREG-UNSPEC
64643	NEURITIS OF PREG-ANTEPAR
64650	BACTERIURIA PREG-UNSPEC
64653	ASY BACTERIURIA-ANTEPART
64660	GU INFECT IN PREG-UNSPEC
64663	GU INFECTION-ANTEPARTUM
64670	LIVER DIS IN PREG-UNSPEC
64673	LIVER DISORDER-ANTEPART
64680	PREG COMPL NEC-UNSPEC
64683	PREG COMPL NEC-ANTEPART
64690	PREG COMPL NOS-UNSPEC
64693	PREG COMPL NOS-ANTEPART
64700	SYPHILIS IN PREG-UNSPEC
64703	SYPHILIS-ANTEPARTUM
64710	GONORRHEA IN PREG-UNSPEC
64713	GONORRHEA-ANTEPARTUM
64720	OTHER VD IN PREG-UNSPEC
64723	OTHER VD-ANTEPARTUM
64730	TB IN PREG-UNSPECIFIED
64733	TUBERCULOSIS-ANTEPARTUM
64740	MALARIA IN PREG-UNSPEC
64743	MALARIA-ANTEPARTUM

Step 2 (diagnosis of pregnancy)	
Required diagnosis: 1	
Look back timeframe: 310 days	
ICD-9 Code	Description
64750	RUBELLA IN PREG-UNSPEC
64753	RUBELLA-ANTEPARTUM
64760	OTH VIRUS IN PREG-UNSPEC
64763	OTH VIRAL DIS-ANTEPARTUM
64780	INF DIS IN PREG NEC-UNSP
64783	INFECT DIS NEC-ANTEPART
64790	INFECT IN PREG NOS-UNSP
64793	INFECT NOS-ANTEPARTUM
64800	DIABETES IN PREG-UNSPEC
64803	DIABETES-ANTEPARTUM
64810	THYROID DYSFUN PREG-UNSP
64813	THYROID DYSFUNC-ANTEPART
64820	ANEMIA IN PREG-UNSPEC
64823	ANEMIA-ANTEPARTUM
64830	DRUG DEPEND PREG-UNSPEC
64833	DRUG DEPENDENCE-ANTEPART
64840	MENTAL DIS PREG-UNSPEC
64843	MENTAL DISORDER-ANTEPART
64850	CONGEN CV DIS PREG-UNSP
64853	CONGEN CV DIS-ANTEPARTUM
64860	CV DIS NEC PREG-UNSPEC
64863	CV DIS NEC-ANTEPARTUM
64870	BONE DISORD IN PREG-UNSP
64873	BONE DISORDER-ANTEPARTUM
64880	ABN GLUCOSE IN PREG-UNSP
64883	ABN GLUCOSE-ANTEPARTUM
64890	OTH CURR COND PREG-UNSP
64893	OTH CURR COND-ANTEPARTUM
64900	TOBACCO USE DISORDER COMPLICATING PREGNANCY, CHILDBIRTH, OR THE PUERPERIUM, UNSPECIFIED AS TO EPISODE OF CARE OR NOT APPLICABLE
64903	TOBACCO USE DISORDER COMPLICATING PREGNANCY, CHILDBIRTH, OR THE PUERPERIUM, ANTEPARTUM CONDITION OR COMPLICATION
64910	OBESITY COMPLICATING PREGNANCY, CHILDBIRTH, OR THE PUERPERIUM, UNSPECIFIED AS TO EPISODE OF CARE OR NOT APPLICABLE
64913	OBESITY COMPLICATING PREGNANCY, CHILDBIRTH, OR THE PUERPERIUM, ANTEPARTUM CONDITION OR COMPLICATION
64920	BARIATRIC SURGERY STATUS COMPLICATING PREGNANCY, CHILDBIRTH, OR THE PUERPERIUM, UNSPECIFIED AS TO EPISODE OF CARE OR NOT APPLICABLE

Step 2 (diagnosis of pregnancy)	
Required diagnosis: 1	
Look back timeframe: 310 days	
ICD-9 Code	Description
64923	BARIATRIC SURGERY STATUS COMPLICATING PREGNANCY, CHILDBIRTH, OR THE PUERPERIUM, ANTEPARTUM CONDITION OR COMPLICATION
64930	COAGULATION DEFECTS COMPLICATING PREGNANCY, CHILDBIRTH, OR THE PUERPERIUM, UNSPECIFIED AS TO EPISODE OF CARE OR NOT APPLICABLE
64933	COAGULATION DEFECTS COMPLICATING PREGNANCY, CHILDBIRTH, OR THE PUERPERIUM, ANTEPARTUM CONDITION OR COMPLICATION
64940	EPILEPSY COMPLICATING PREGNANCY, CHILDBIRTH, OR THE PUERPERIUM, UNSPECIFIED AS TO EPISODE OF CARE OR NOT APPLICABLE
64943	EPILEPSY COMPLICATING PREGNANCY, CHILDBIRTH, OR THE PUERPERIUM, ANTEPARTUM CONDITION OR COMPLICATION
64950	SPOTTING COMPLICATING PREGNANCY, UNSPECIFIED AS TO EPISODE OF CARE OR NOT APPLICABLE
64953	SPOTTING COMPLICATING PREGNANCY, ANTEPARTUM CONDITION OR COMPLICATION
64960	UTERINE SIZE DATE DISCREPANCY, UNSPECIFIED AS TO EPISODE OF CARE OR NOT APPLICABLE
64963	UTERINE SIZE DATE DISCREPANCY, ANTEPARTUM CONDITION OR COMPLICATION
64970	CERVICAL SHORTENING, UNSPECIFIED AS TO EPISODE OF CARE OR NOT APPLICABLE
64973	CERVICAL SHORTENING, ANTEPARTUM CONDITION OR COMPLICATION
651	MULTIPLE GESTATION
65103	TWIN PREGNANCY-ANTEPART
65113	TRIPLET PREG-ANTEPARTUM
65123	QUADRUPLET PREG-ANTEPART
65133	TWINS W FETAL LOSS-ANTE
65143	TRIPLETS W FET LOSS-ANTE
65153	QUADS W FETAL LOSS-ANTE
65173	MULTIPLE GESTATION FOLLOWING (ELECTIVE) FETAL REDUCTION, ANTEPARTUM CONDITION OR COMPLICATION.
65203	UNSTABLE LIE-ANTEPARTUM
654	ABNORMALITY OF ORGANS AND SOFT TISSUES OF PELVIS
655	KNOWN OR SUSPECTED FETAL ABNORMALITY AFFECTING MANAGEMENT OF MOTHER
65503	FETAL CNS MALFOR-ANTEPAR
65513	FET CHROMO ABN-ANTEPART
65523	FAMIL HERED DIS-ANTEPART
65543	FET DAMG D/T DIS-ANTEPAR
65553	FET DAMG D/T DRUG-ANTEPA
65563	RADIAT FET DAMAG-ANTEPAR

Step 2 (diagnosis of pregnancy)	
Required diagnosis: 1	
Look back timeframe: 310 days	
ICD-9 Code	Description
65573	DEC FETAL MOVMT ANTEPART
65583	FETAL ABNORM NEC-ANTEPAR
65593	FETAL ABNORM NOS-ANTEPAR
656	OTHER KNOWN OR SUSPECTED FETAL AND PLACENTAL PROBLEMS AFFECTING MANAGEMENT OF MOTHER
65703	POLYHYDRAMNIOS-ANTEPART
65803	OLIGOHYDRAMNIOS-ANTEPAR
65963	ELDERLY MULTIGRAVD-ANTEP
65973	ABN FTL HRT RATE/RHY-ANT
67103	VARIC VEIN LEG-ANTEPART
67113	VARICOSE VULVA-ANTEPART
67123	THROMBOPHLEBIT-ANTEPART
67803	FETAL HEMATOLOGIC CONDITIONS, ANTEPARTUM CONDITION OR COMPLICATION
67813	FETAL CONJOINED TWINS, ANTEPARTUM CONDITION OR COMPLICATION
67903	MATERNAL COMPLICATIONS FROM IN UTERO PROCEDURE, ANTEPARTUM CONDITION OR COMPLICATION
67913	FETAL COMPLICATIONS FROM IN UTERO PROCEDURES, ANTEPARTUM CONDITION OR COMPLICATION
V23	SUPERVISION OF HIGH-RISK PREGNANCY
V230	PREG W HX OF INFERTILITY
V231	PREG W HX-TROPHOBLAS DIS
V232	PREG W HX OF ABORTION
V233	GRAND MULTIPARITY
V234	PREG W POOR OBSTETRIC HX
V235	PREG W POOR REPRODUCT HX
V237	INSUFFICNT PRENATAL CARE
V238	SUPERVISION OF OTHER HIGH-RISK PREGNANCY
V239	SUPRV HIGH-RISK PREG NOS
V241	POSTPART CARE-LACTATION
V2341	PREGNANCY WITH HISTORY OF PRE-TERM LABOR
V2349	PREGNANCY WITH OTHER POOR OBSTETRIC HISTORY
V2381	SUPRV ELDERLY PRIMIGRAV
V2382	SUPRV ELDERLY MULTIGRAV
V2383	SUPRV YOUNG PRIMIGRAVIDA
V2384	SUPRV YOUNG MULTIGRAVIDA
V2385	PREGNANCY RESULTING FROM ASSISTED REPRODUCTIVE TECHNOLOGY
V2386	PREGNANCY WITH HISTORY OF IN UTERO PROCEDURE DURING PREVIOUS PREGNANCY
V2389	SUPRV HIGH-RISK PREG NEC



Propylthiouracil

Clinical Edit Criteria References

1. Klasko RK, editor: DRUGDEX® System (electronic version). Greenwood Village, CO: Thomson Micromedex. Available at <http://www.thomsonhc.com>. Accessed on October 7, 2009.
2. Drug Facts and Comparisons. Facts and Comparisons 4.0 [online database]. St. Louis, MO: Wolters Kluwer Health, Inc., 2009. Available at <http://online.factsandcomparisons.com>. Accessed on October 7, 2009.
3. U.S. Department of Health and Human Services, U.S. Food and Drug Administration. Propylthiouracil-induced liver failure. FDA Alert. June 4, 2009. Available at <http://www.fda.gov/Drugs/DrugSafety/PostmarketDrugSafetyInformationforPatientsandProviders/DrugSafetyInformationforHealthcareProfessionals/ucm162701.htm>. Accessed on October 7, 2009.
4. AHFS Drug Information 2009 [online book]. Jackson, WY: Teton Data Systems, Version 6.1.0, 2009. Based on: McEvoy GK, editor. AHFS drug information 2009. Bethesda, MD: American Society of Health-System Pharmacists. 2009.
5. Ozenirler S, Tuncer C, Boztepe U, et al. Propylthiouracil-induced hepatic damage. *Ann Pharmacother.* 1996; 30:960-3.
6. Reddy CM. Propylthiouracil and hepatitis: A case report. *J Nat Med Assoc* 1979; 71:1185-6.
7. Ruiz JK, Rossi GV, Vallejos HA, et al. Fulminant hepatic failure associated with propylthiouracil. *Ann Pharmacother.* 2003; 37:224-8.
8. Woeber KA. Methimazole-induced hepatotoxicity. *Endocrine Practice.* 2002; 8(3):222-4.
9. Rivkees SA, Mattison DR. Ending propylthiouracil-induced liver failure in children. *N Engl J Med* 2009; 360:1575.

Publication History

The Publication History records the publication iterations and revisions to this document. Notes for the *most current revision* are also provided in the **Revision Notes** on the first page of this document.

Publication Date	Notes
03/09/2011	Initial publication and posting to website
10/13/2011	<ul style="list-style-type: none">• Added a new section to specify the drugs requiring prior authorization• In the "Clinical Edit Supporting Tables" section, revised table to specify the diagnosis codes pertinent to step 2 of the logic diagram• Modified the criteria logic and logic diagram to identify the steps that are executed manually