

**Texas Prior Authorization Program
Clinical Edit Criteria**

Drug/Drug Class

Provigil (Modafinil)

Clinical Edit Information Included in this Document

- **Drugs requiring prior authorization:** the list of drugs requiring prior authorization for this clinical edit
- **Prior authorization criteria logic:** a description of how the prior authorization request will be evaluated against the clinical edit criteria rules
- **Logic diagram:** a visual depiction of the clinical edit criteria logic
- **Supporting tables:** a collection of information associated with the steps within the criteria (diagnosis codes, procedure codes, and therapy codes); provided when applicable
- **References:** clinical publications and sources relevant to this clinical edit

Note: Click the hyperlink to navigate directly to that section.

Revision Notes

Added Modafinil 100mg and 200 mg tablets to table of drugs requiring prior authorization

**Provigil (Modafinil)****Drugs Requiring Prior Authorization**

Drugs Requiring Prior Authorization	
Label Name	GCN
MODAFINIL 100 MG TABLET	26101
MODAFINIL 200 MG TABLET	26102
PROVIGIL 100 MG TABLET	26101
PROVIGIL 200 MG TABLET	26102



Provigil (Modafinil)

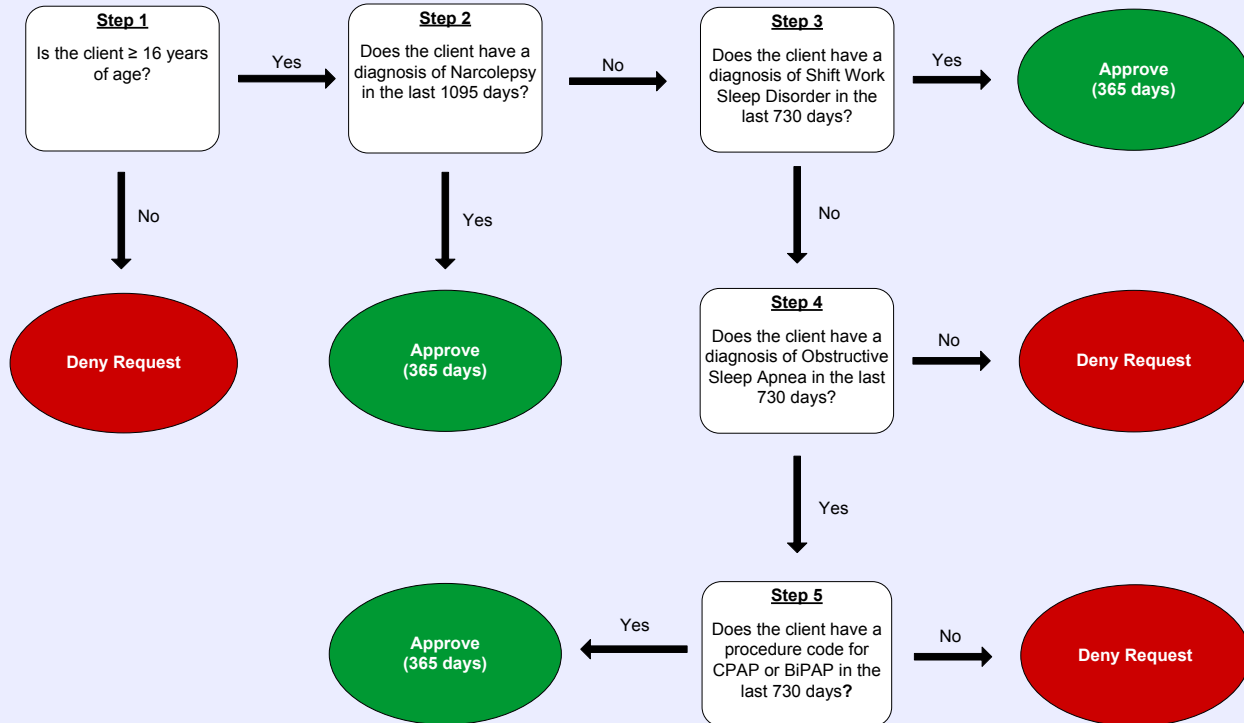
Clinical Edit Criteria Logic

1. Is the client greater than or equal to (\geq) 16 years of age?
 Yes (Go to #2)
 No (Deny)
2. Does the client have a diagnosis of Narcolepsy in the last 1095 days?
 Yes (Approve – 365 days)
 No (Go to #3)
3. Does the client have a diagnosis of Shift Work Sleep Disorder in the last 730 days?
 Yes (Approve – 365 days)
 No (Go to #4)
4. Does the client have a diagnosis of Obstructive Sleep Apnea in the last 730 days?
 Yes (Go to #5)
 No (Deny)
5. Does the client have a procedure code for CPAP or BiPAP in the last 730 days?
 Yes (Approve – 365 days)
 No (Deny)



Provigil (Modafinil)

Clinical Edit Criteria Logic Diagram





Provigil (Modafinil)

Clinical Edit Criteria Supporting Tables

Step 2 (diagnosis of Narcolepsy) Required diagnosis: 1 Look back timeframe: 1095 days	
ICD-9 Code	Description
34700	NARCOLEPSY,WITHOUT CATAPLEXY
34701	NARCOLEPSY,WITH CATAPLEXY
34710	NARCOLEPSY IN CONDITIONS CLASSIFIED ELSEWHERE, WITHOUT CATAPLEXY
34711	NARCOLEPSY IN CONDITIONS CLASSIFIED ELSEWHERE, WITH CATAPLEXY

Step 3 (diagnosis of Shift Work Sleep Disorder) Required diagnosis: 1 Look back timeframe: 730 days	
ICD-9 Code	Description
30745	CIRCADIAN RHYTHM SLEEP DISORDER, OF NON ORGANIC
32736	CIRCADIAN RHYTHM SLEEP DISORDER, SHIFT WORK TYPE

Step 4 (diagnosis of Obstructive Sleep Apnea) Required diagnosis: 1 Look back timeframe: 730 days	
ICD-9 Code	Description
32723	OBSTRUCTIVE SLEEP APNEA (ADULT)
78051	INSOMNIA WITH SLEEP APNEA UNSPECIFIED
78053	HYPERSOMNIA WITH SLEEP APNEA UNSPECIFIED
78057	UNSPECIFIED SLEEP APNEA

Step 5 (procedure code for CPAP or BiPAP) Required procedure: 1 Look back timeframe: 730 days	
CPT Code	Description
9390	CONTINUOUS POSITIVE AIRWAY PRESSURE (CPAP)
94660	CPAP INITIATION AND MANAGEMENT
95811	SLEEP STAGING WITH INITIATION OF CPAP

Step 5 (procedure code for CPAP or BiPAP)	
Required procedure: 1	
Look back timeframe: 730 days	
CPT Code	Description
E0601	CPAP DEVICE
E0470	CPAP WITH BI-LEVEL FAILURE
E0471	CPAP WITH BI-LEVEL FAILURE
E0472	CPAP WITH BI-LEVEL FAILURE



Provigil (Modafinil)

Clinical Edit Criteria References

1. Provigil® (modafinil) prescribing information. Frazer, PA: Cephalon, Inc.; August 17, 2007. Available at: <http://www.fda.gov/cder/foi/label/2007/020717s020s013s018lbl.pdf>. Accessed on August 11, 2008.
2. Ballon JS, Feifel D. A systematic review of modafinil: Potential clinical uses and mechanisms of action. *J Clin Psychiatry* 2006;67:554-66.
3. Psychopharmacologic Drugs Advisory Committee, United States Food and Drug Administration. March 23, 2006. Meeting minutes available at: <http://www.fda.gov/ohrms/dockets/ac/06/minutes/2006-4212m1.pdf>. Accessed on August 11, 2008.
4. Gold Standard. Clinical pharmacology: Provigil monograph. Tampa, FL; 2011. Accessed on October 14, 2011.

Publication History

The Publication History records the publication iterations and revisions to this document. Notes for the *most current revision* are also provided in the **Revision Notes** on the first page of this document.

Publication Date	Notes
01/31/2011	Initial publication and posting to website
04/13/2012	<ul style="list-style-type: none">• Added a new section to specify the drugs requiring prior authorization• In the "Clinical Edit Supporting Tables" section, revised tables to specify the diagnosis codes pertinent to steps 2, 3 and 4 of the logic diagram• In the "Clinical Edit Supporting Tables" section, revised table to specify the procedure codes pertinent to step 5 of the logic diagram
10/26/2012	Added Modafinil 100mg and 200mg tablets to table of drugs requiring prior authorization