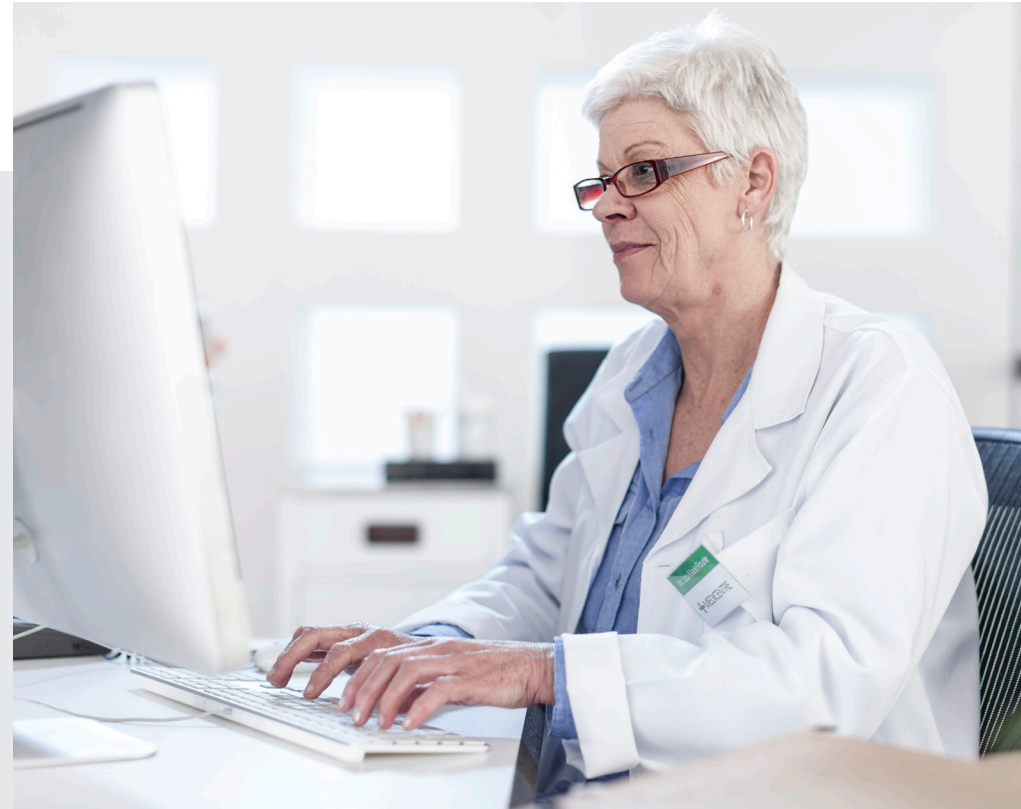


---

# Quality Measures Desktop Reference for Medicaid Providers

HEDIS® is a widely used set of performance measures developed and maintained by NCQA. These are used to drive improvement efforts surrounding best practices.



## Enrollee care opportunities

You can find enrollee care opportunities within the **Patient360** application located on Availity Essentials **Payer Spaces**. To access the **Patient360** application, you must have the *Patient360* role assignment. From the Availity home page, select **Payer Spaces**, then choose the health plan from the menu. Choose the **Patient360** tile from the **Payer Space Applications** menu and complete the required information on the screen. Gaps in care are located in the *Active Alerts* section of the *Enrollee Summary*.



Measure	Exclusions	Eligible population	Occurrence	Description of measurement screening, test, or treatment needed
<b>Weight Assessment and Counseling for Nutrition and Physical Activity for Children/Adolescents (WCC)</b>	<ul style="list-style-type: none"> <li>Enrollees with a diagnosis of pregnancy</li> <li>Enrollees who use hospice services or elect to use a hospice benefit any time during the measurement year</li> <li>Enrollees who die any time during the measurement year</li> </ul>	Ages 3 to 17	Annual	<p>The percentage of enrollees who had an enrollee visit with a PCP or OB/GYN during the measurement year in which the following were documented:</p> <ul style="list-style-type: none"> <li>BMI percentile documentation*</li> <li>Counseling for nutrition</li> <li>Counseling for physical activity</li> </ul> <p>* Because BMI norms for youth vary with age and gender, this measure evaluates whether BMI percentile is assessed rather than an absolute BMI value.</p>
<b>Immunizations for Adolescents (IMA)</b>	<ul style="list-style-type: none"> <li>Enrollees who use hospice services or elect to use a hospice benefit any time during the measurement year</li> <li>Enrollees who die any time during the measurement year</li> </ul>	Ages 9 to 13	Multiple doses	<p>The percentage of enrollees who had one dose of meningococcal vaccine, one tetanus, diphtheria toxoids and acellular pertussis (Tdap) vaccine, and have completed the human papillomavirus (HPV) vaccine series by their 13th birthday. The measure calculates a rate for each vaccine and two combination rates.</p> <ul style="list-style-type: none"> <li>Meningococcal vaccine between 11th and 13th birthday</li> <li>Tdap vaccine between 10th and 13th birthday</li> <li>HPV vaccine between 9th and 13th birthday</li> </ul>
<b>Lead Screening in Children (LSC)</b>	<ul style="list-style-type: none"> <li>Enrollees who use hospice services or elect to use a hospice benefit any time during the measurement year.</li> <li>Enrollees who die any time during the measurement year</li> </ul>	Ages 0 to 2	Once before age 2	<p>The percentage of enrollees who had one or more capillary or venous lead blood test by their second birthday</p>

Measure	Exclusions	Eligible population	Occurrence	Description of measurement screening, test, or treatment needed
<b>Cervical Cancer Screening (CCS)</b>	<ul style="list-style-type: none"> <li>• Enrollees who use hospice services or elect to use a hospice benefit any time during the measurement year</li> <li>• Enrollees who die any time during the measurement year</li> <li>• Hysterectomy with no residual cervix</li> <li>• Cervical agenesis or acquired absence of cervix</li> <li>• Enrollees receiving palliative care</li> <li>• Enrollees who had an encounter for palliative care</li> <li>• Enrollees with sex assigned at birth of male anytime during the enrollee's history</li> </ul>	Age 21 to 64	Varies by age	<p>The percentage of enrollees who were recommended for routine cervical cancer screening and were screened for cervical cancer using any of the following criteria:</p> <ul style="list-style-type: none"> <li>• Enrollees 21 to 64 years of age who were recommended for routine cervical cancer screening and had cervical cytology performed within the last three years</li> <li>• Enrollees 30 to 64 years of age who were recommended for routine cervical cancer screening and had cervical high-risk human papillomavirus (hrHPV) testing performed within the last five years</li> <li>• Enrollees 30 to 64 years of age who were recommended for routine cervical cancer screening and had cervical cytology/high-risk human papillomavirus (hrHPV) cotesting within the last five years</li> </ul>
<b>Childhood Immunization Status (CIS)</b>	<ul style="list-style-type: none"> <li>• Enrollees who use hospice services or elect to use a hospice benefit any time during the measurement year</li> <li>• Enrollees who die any time during the measurement year</li> <li>• Enrollees who had a contraindication to a childhood vaccine on or before their second birthday</li> </ul>	Ages 0 to 2	Multiple doses	<p>The percentage of enrollees who had appropriate doses of the following vaccines on or before their second birthday:</p> <ul style="list-style-type: none"> <li>• Four diphtheria, tetanus, and acellular pertussis (DTaP)</li> <li>• Three polio (IPV)</li> <li>• One measles, mumps, and rubella (MMR) (can only be given on or between first and second birthday to close the gap)</li> <li>• Three haemophilus influenza type B (HiB)</li> <li>• Three hepatitis B (One of the three vaccinations can be a newborn hepatitis B vaccination during the eight-day period that begins on the date of birth and ends seven days after the date of birth)</li> <li>• One chicken pox (VZV) (can only be given on or between first and second birthday to close the gap)</li> <li>• Four pneumococcal conjugate (PCV)</li> <li>• One hepatitis A (HepA) (can only be given on or between first and second birthday to close the gap)</li> <li>• Two two-dose RV or three three-dose rotavirus (RV) (or one two-dose and two three-dose RV combination)</li> <li>• Two influenza (flu) (Influenza cannot be given until infant is 6 months of age — one of the two vaccinations for influenza can be an LAIV administered on the child's second birthday)</li> </ul>



Measure	Exclusions	Eligible population	Occurrence	Description of measurement screening, test, or treatment needed
<b>Chlamydia Screening in Women (CHL)</b>	<ul style="list-style-type: none"> <li>Enrollees who use hospice services or elect to use a hospice benefit any time during the measurement year</li> <li>Enrollees who die any time during the measurement year</li> </ul>	Ages 16 to 24	Annual	Percentage of enrollees who were identified as sexually active and who had at least one screening test for chlamydia during the measurement year
<b>Oral Evaluation, Dental Services (OED)</b>	<ul style="list-style-type: none"> <li>Enrollees who use hospice services or elect to use a hospice benefit any time during the measurement year</li> <li>Enrollees who die any time during the measurement year</li> </ul>	Ages 0 to 20	Annual	The percentage of enrollees under 21 years of age who received a comprehensive or periodic oral evaluation with a dental provider during the measurement year
<b>Topical Fluoride for Children (TFC)</b>	<ul style="list-style-type: none"> <li>Enrollees who use hospice services or elect to use a hospice benefit any time during the measurement year</li> <li>Enrollees who die any time during the measurement year</li> </ul>	Ages 1 to 4	Annual	The percentage of enrollees who received at least two fluoride varnish during the measurement year applications
<b>Appropriate Testing for Pharyngitis (CWP)</b>	<ul style="list-style-type: none"> <li>Enrollees who use hospice services or elect to use a hospice benefit any time during the measurement year</li> <li>Enrollees who die any time during the measurement year</li> </ul>	Ages 3 years and older	Each occurrence	The percentage of episodes for enrollees who have been diagnosed with pharyngitis, dispensed an antibiotic, and received group A streptococcus (strep) test for the episode on or between July 1 of the year prior to the measurement year to June 30 of the measurement year
<b>Pharmacotherapy Management of COPD Exacerbation (PCE)</b>	<ul style="list-style-type: none"> <li>Enrollees who use hospice services or elect to use a hospice benefit any time during the measurement year</li> <li>Enrollees who die any time during the measurement year</li> </ul>	Ages 40 and older	Inpatient discharge or ED event	<p>The percentage of COPD exacerbations for enrollees who had an acute inpatient discharge or emergency department (ED) visit on or between January 1 to November 30 of the measurement year and who were dispensed appropriate medications. Two rates are reported:</p> <ul style="list-style-type: none"> <li><b>Dispensed a systemic corticosteroid</b> (or there was evidence of an active prescription) within 14 days of the event</li> <li><b>Dispensed a bronchodilator</b> (or there was evidence of an active prescription) within 30 days of the event</li> </ul> <p><b>Note:</b> The eligible population for this measure is based on acute inpatient discharges and ED visits, not on enrollees. It is possible for the denominator to include multiple events for the same individual.</p>



Measure	Exclusions	Eligible population	Occurrence	Description of measurement screening, test, or treatment needed
<b>Asthma Medication Ratio (AMR)</b>	<ul style="list-style-type: none"><li>• Enrollees who use hospice services or elect to use a hospice benefit any time during the measurement year</li><li>• Enrollees who die any time during the measurement year</li><li>• Enrollees who had a diagnosis that requires a different treatment approach than enrollees with asthma any time during the enrollee's history through December 31 of the measurement year.</li><li>• Enrollees who had no asthma controller or reliever medications dispensed during the measurement year.</li></ul>	Ages 5 to 64	Annual	The percentage of enrollees who have been identified as having persistent asthma and had a ratio of controller medications to total asthma medications of 0.50 or greater during the measurement year.





Measure	Exclusions	Eligible population	Occurrence	Description of measurement screening, test, or treatment needed
<b>Persistence of Beta-Blocker Treatment After a Heart Attack (PBH)</b>	<ul style="list-style-type: none"> <li>• Enrollees who use hospice services or elect to use a hospice benefit any time during the measurement year</li> <li>• Enrollees who die any time during the measurement year</li> <li>• Enrollees with a medication dispensing event that indicates a contraindication to beta-blocker therapy.</li> <li>• Enrollees with a diagnosis that indicates a contraindication to beta-blocker therapy any time during the enrollee's history through the end of the continuous enrollment period meet criteria.</li> <li>• Enrollees 66 to 80 years of age as of December 31 of the measurement year with frailty and advanced illness. Enrollees must meet both frailty and advanced illness criteria to be excluded.</li> <li>• Enrollees 81 years of age and older as of December 31 of the measurement year (all product lines) with at least two indications of frailty with different dates of service during the measurement year.</li> </ul>	Ages 18 and older	After discharge	The percentage of enrollees who were hospitalized and discharged from July 1 of the year prior to the measurement year to June 30 of the measurement year with a diagnosis of AMI (Acute myocardial infarction) and who received persistent beta-blocker treatment for 180 days (six months) after discharge.



Measure	Exclusions	Eligible population	Occurrence	Description of measurement screening, test, or treatment needed
<b>Controlling High Blood Pressure (CBP)</b>	<ul style="list-style-type: none"> <li>• Enrollees who use hospice services or elect to use a hospice benefit any time during the measurement year</li> <li>• Enrollees who die any time during the measurement year</li> <li>• Enrollees receiving palliative care any time during the measurement year</li> <li>• Enrollees who had an encounter for palliative care anytime during the measurement year</li> <li>• Enrollees with a diagnosis that indicates end-stage renal disease (ESRD) any time during the enrollee's history on or prior to December 31 of the measurement year</li> <li>• Enrollees with a procedure that indicates ESRD: dialysis any time during the enrollee's history on or prior to December 31 of the measurement year</li> <li>• Enrollees with a diagnosis of pregnancy any time during the measurement year.</li> <li>• Enrollees 66 to 80 years of age as of December 31 of the measurement year (all product lines) with frailty <b>and</b> advanced illness. Enrollees must meet <b>both</b> frailty and advanced illness criteria to be excluded.</li> <li>• Enrollees 81 years of age and older as of December 31 of the measurement year (all product lines) with at least two indications of frailty with different dates of service during the measurement year.</li> </ul>	Ages 18 to 85	Annual	<p>The percentage of enrollees who had a diagnosis of hypertension (HTN) and whose blood pressure (BP) was adequately controlled (&lt; 140/90 mm Hg) during the measurement year.</p> <p>The final BP of the measurement year is captured.</p> <p><b>Note:</b> The most recent BP reading during the measurement year on or after the second diagnosis of hypertension. If multiple BP measurements occur on the same date or are noted in the chart on the same date, use the lowest systolic and lowest diastolic BP reading. If no BP is recorded during the measurement year, assume that the enrollee is "not controlled."</p>





Measure	Exclusions	Eligible population	Occurrence	Description of measurement screening, test, or treatment needed
<b>Statin Therapy for Patients with Cardiovascular Disease (SPC)</b>	<ul style="list-style-type: none"> <li>• Enrollees who use hospice services or elect to use a hospice benefit any time during the measurement year</li> <li>• Enrollees who die any time during the measurement year</li> <li>• Enrollees with a diagnosis of pregnancy during the measurement year or the year prior to the measurement year.</li> <li>• In vitro fertilization in the measurement year or the year prior to the measurement year</li> <li>• Dispensed at least one prescription for clomiphene during the measurement year or the year prior to the measurement year</li> <li>• End stage renal disease (ESRD) during the measurement year or the year prior to the measurement year</li> <li>• Dialysis during the measurement year or the year prior to the measurement year</li> <li>• Cirrhosis during the measurement year or the year prior to the measurement year</li> <li>• Myalgia, myositis, myopathy, or rhabdomyolysis during the measurement year</li> <li>• Enrollees receiving palliative care any time during the measurement year</li> <li>• Enrollees who had an encounter for palliative anytime during the measurement year</li> <li>• Enrollees 66 years of age and older as of December 31 of the measurement year (all product lines) with frailty <b>and</b> advanced illness. Enrollees must meet <b>both</b> frailty and advanced illness criteria to be excluded</li> </ul>	Men ages 21 to 75  Women ages 40 to 75	Annual	<p>The percentage of enrollees who are identified as having clinical atherosclerotic cardiovascular disease (ASCVD) and met the following criteria. The following rates are reported:</p> <ul style="list-style-type: none"> <li>• <b>Received Statin Therapy:</b> Enrollees who were dispensed at least one high- or moderate-intensity statin medication during the measurement year</li> <li>• <b>Statin Adherence 80%:</b> Enrollees who remained on a high- or moderate-intensity statin medication for at least 80% of the treatment period (treatment period begins with the earliest dispensing event for any high-intensity or moderate-intensity statin medication during the measurement year).</li> </ul>





Measure	Exclusions	Eligible population	Occurrence	Description of measurement screening, test, or treatment needed
<b>Cardiac Rehabilitation (CRE)</b>	<ul style="list-style-type: none"> <li>• Enrollees who use hospice services or elect to use a hospice benefit any time during the measurement year</li> <li>• Enrollees who die any time during the measurement year</li> <li>• Enrollees receiving palliative care any time during the measurement year</li> <li>• Enrollees who had an encounter for palliative anytime during the measurement year</li> <li>• Enrollees 66 to 80 years of age as of December 31 of the measurement year (all product lines) with frailty <b>and</b> advanced illness. Enrollees must meet <b>both</b> frailty and advanced illness criteria to be excluded.</li> <li>• Enrollees 81 years of age and older as of December 31 of the measurement year (all product lines) with at least two indications of frailty with different dates of service during the measurement year</li> <li>• Discharged from an inpatient setting with any of the following on the discharge claim during the 180 days after the episode date: <ul style="list-style-type: none"> <li>– Myocardial Infarction (MI)</li> <li>– Coronary artery bypass graft (CABG)</li> <li>– Heart or heart/lung transplant</li> <li>– Heart valve repair or replacement</li> <li>– Percutaneous Coronary Intervention (PCI)</li> </ul> </li> </ul>	Ages 18 and older	Annual	<p>The percentage of enrollees who have attended cardiac rehabilitation following a qualified cardiac event including, myocardial infarction, percutaneous coronary intervention, coronary artery bypass grafting, heart and heart/lung transplantation or heart valve repair/replacement on or between July 1 of the year prior to the measurement year to June 30 of the measurement year. Four rates are reported:</p> <ul style="list-style-type: none"> <li>• <b>Initiation:</b> the percentage of enrollees who attended two or more sessions of cardiac rehabilitation within 30 days after a qualifying event</li> <li>• <b>Engagement 1:</b> the percentage of enrollees who attended 12 or more sessions of cardiac rehabilitation within 90 days after a qualifying event</li> <li>• <b>Engagement 2:</b> the percentage of enrollees who attended 24 or more sessions of cardiac rehabilitation within 180 days after a qualifying event</li> <li>• <b>Achievement:</b> the percentage of enrollees who attended 36 or more sessions of cardiac rehabilitation within 180 days after a qualifying event.</li> </ul>



Measure	Exclusions	Eligible population	Occurrence	Description of measurement screening, test, or treatment needed
<b>Glycemic Status Assessment for Patients with Diabetes (GSD)</b>	<ul style="list-style-type: none"> <li>• Enrollees who use hospice services or elect to use a hospice benefit any time during the measurement year</li> <li>• Enrollees who die any time during the measurement year</li> <li>• Enrollees receiving palliative care any time during the measurement year</li> <li>• Enrollees who had an encounter for palliative anytime during the measurement year</li> <li>• Enrollees 66 years of age and older as of December 31 of the measurement year (all product lines) with frailty <b>and</b> advanced illness. Enrollees must meet <b>both</b> frailty and advanced illness criteria to be excluded</li> </ul>	Ages 18 to 75	Annual	<p>The percentage of enrollees with diabetes (types 1 and 2) whose most recent glycemic status (hemoglobin A1c [HbA1c] or glucose management indicator [GMI]) was at the following levels during the measurement year:</p> <ul style="list-style-type: none"> <li>• Glycemic Status (&lt; 8%)</li> <li>• Glycemic Status (&gt; 9%)</li> </ul> <p><b>Note:</b> Organizations must use the same data collection method (administrative or hybrid) to report these indicators.</p>
<b>Blood Pressure Control Patients with Diabetes (BPD)</b>	<ul style="list-style-type: none"> <li>• Enrollees who use hospice services or elect to use a hospice benefit any time during the measurement year</li> <li>• Enrollees who die any time during the measurement year</li> <li>• Enrollees receiving palliative care any time during the measurement year</li> <li>• Enrollees who had an encounter for palliative anytime during the measurement year</li> <li>• Enrollees 66 years of age and older as of December 31 of the measurement year (all product lines) with frailty <b>and</b> advanced illness. Enrollees must meet <b>both</b> frailty and advanced illness criteria to be excluded</li> </ul>	Ages 18 to 75	Annual	<p>The percentage of enrollees with diabetes (types 1 and 2) whose blood pressure (BP) was adequately controlled (&lt; 140/90 mm Hg) during the measurement year</p> <p>The final BP of the measurement year is captured.</p>





Measure	Exclusions	Eligible population	Occurrence	Description of measurement screening, test, or treatment needed
Eye Exam for Patients with Diabetes (EED)	<ul style="list-style-type: none"> <li>• Enrollees who use hospice services or elect to use a hospice benefit any time during the measurement year</li> <li>• Enrollees who die any time during the measurement year</li> <li>• Enrollees receiving palliative care any time during the measurement year</li> <li>• Enrollees who had an encounter for palliative anytime during the measurement year</li> <li>• Enrollees 66 years of age and older as of December 31 of the measurement year (all product lines) with frailty <b>and</b> advanced illness. Enrollees must meet <b>both</b> frailty and advanced illness criteria to be excluded.</li> </ul>	Ages 18 to 75	Annual	<p>The percentage of enrollees with diabetes (types 1 and 2) who had one of the following:</p> <ul style="list-style-type: none"> <li>• A retinal or dilated eye exam by an eye care professional (optometrist or ophthalmologist) in the measurement year</li> <li>• A negative retinal or dilated eye exam (negative for retinopathy) by an eye care professional in the year prior to the measurement year</li> <li>• Bilateral eye enucleation any time during the enrollee's history through December 31 of the measurement year</li> </ul>





Measure	Exclusions	Eligible population	Occurrence	Description of measurement screening, test, or treatment needed
<b>Kidney Health Evaluation for Patients with Diabetes (KED)</b>	<ul style="list-style-type: none"> <li>• Enrollees who use hospice services or elect to use a hospice benefit any time during the measurement year</li> <li>• Enrollees who die any time during the measurement year</li> <li>• Enrollees receiving palliative care any time during the measurement year</li> <li>• Enrollees who had an encounter for palliative care anytime during the measurement year</li> <li>• Enrollees with a diagnosis of end-stage renal disease (ESRD) any time during the enrollee's history on or prior to December 31 of the measurement year</li> <li>• Enrollees who had dialysis any time during the enrollee's history on or prior to December 31 of the measurement year</li> <li>• Enrollees 66 to 80 years of age as of December 31 of the measurement year (all product lines) with frailty <b>and</b> advanced illness. Enrollees must meet <b>both</b> frailty and advanced illness criteria to be excluded.</li> <li>• Enrollees 81 years of age and older as of December 31 of the measurement year (all product lines) with at least two indications of frailty with different dates of service during the measurement year</li> <li>• Advanced illness on at least two different dates of service</li> <li>• Dispensed dementia medication</li> </ul>	Ages 18 to 85	Annual	The percentage of enrollees with diabetes (type 1 and type 2) who received a kidney health evaluation, defined by an estimated glomerular filtration rate (eGFR) <b>and</b> a urine albumin-creatinine rate (uACR), during the measurement year.





Measure	Exclusions	Eligible population	Occurrence	Description of measurement screening, test, or treatment needed
<b>Statin Therapy for Patients with Diabetes (SPD)</b>	<ul style="list-style-type: none"> <li>• Enrollees with at least one of the following during the year prior to the measurement year in any setting:               <ul style="list-style-type: none"> <li>– Myocardial Infarction (MI)</li> <li>– Coronary artery bypass graft (CABG)</li> <li>– Percutaneous Coronary Intervention (PCI)</li> <li>– Other revascularization procedure</li> </ul> </li> <li>• Enrollees who had at least one encounter with a diagnosis of IVD during both the measurement year and the year prior to the measurement year</li> <li>• Enrollees with a diagnosis of pregnancy during the measurement year or year prior to the measurement year</li> <li>• In vitro fertilization in the measurement year or year prior to the measurement year</li> <li>• Dispensed at least one prescription for clomiphene during the measurement year or the year prior to the measurement year</li> <li>• End stage renal disease (ESRD) during the measurement year or the year prior to the measurement year</li> <li>• Dialysis during the measurement year or the year prior to the measurement year</li> <li>• Cirrhosis during the measurement year or the year prior to the measurement year</li> <li>• Myalgia, myositis, myopathy, or rhabdomyolysis during the measurement year</li> </ul>	Ages 40 to 75	Annual	<p>The percentage of enrollees with diabetes who do not have clinical atherosclerotic cardiovascular disease (ASCVD) who met the following criteria. Two rates are reported:</p> <ul style="list-style-type: none"> <li>• <b>Received statin therapy:</b> enrollees who were dispensed at least one statin medication of any intensity during the measurement year</li> <li>• <b>Statin adherence 80%:</b> enrollees who remained on a statin medication of any intensity for at least 80% of the treatment period (treatment period begins with the earliest dispensing event for any statin medication during the measurement year).</li> </ul>



Measure	Exclusions	Eligible population	Occurrence	Description of measurement screening, test, or treatment needed
<b>Statin Therapy for Patients with Diabetes (SPD) (cont.)</b>	<ul style="list-style-type: none"> <li>• Enrollees who use hospice services or elect to use a hospice benefit any time during the measurement year</li> <li>• Enrollees who die any time during the measurement year</li> <li>• Enrollees receiving palliative care any time during the measurement year</li> <li>• Enrollees who had an encounter for palliative care any time during the measurement year</li> <li>• Enrollees 66 years of age and older as of December 31 of the measurement year (all product lines) with frailty <b>and</b> advanced illness. Enrollees must meet <b>both</b> frailty and advanced illness criteria to be excluded</li> </ul>	Ages 40 to 75	Annual	<p>The percentage of enrollees with diabetes who do not have clinical atherosclerotic cardiovascular disease (ASCVD) who met the following criteria. Two rates are reported:</p> <ul style="list-style-type: none"> <li>• <b>Received statin therapy:</b> enrollees who were dispensed at least one statin medication of any intensity during the measurement year</li> <li>• <b>Statin adherence 80%:</b> enrollees who remained on a statin medication of any intensity for at least 80% of the treatment period (treatment period begins with the earliest dispensing event for any statin medication during the measurement year).</li> </ul>
<b>Diagnosed Mental Health Disorders (DMH)</b>	<ul style="list-style-type: none"> <li>• Enrollees who use hospice services or elect to use a hospice benefit any time during the measurement year</li> <li>• Enrollees who die any time during the measurement year</li> </ul>	1 year or older	Annual	<p>The percentage of enrollees who were diagnosed with a mental health disorder during the measurement year</p> <p><b>Note:</b> The measure provides information on the diagnosed prevalence of mental health disorders. Neither a higher nor lower rate indicates better performance.</p>
<b>Antidepressant Medication Management (AMM)</b>	<ul style="list-style-type: none"> <li>• Enrollees who use hospice services or elect to use a hospice benefit any time during the measurement year</li> <li>• Enrollees who die any time during the measurement year</li> <li>• Enrollees who did not have an encounter with a diagnosis of major depression during the 121-day period from 60 days prior to the index prescription start date (IPSD), through the IPSD and the 60 days after the IPSD</li> </ul>	Ages 18 and older	Per episode	<p>The percentage of enrollees who were treated with antidepressant medication, had a diagnosis of major depression and who remained on an antidepressant medication treatment. Two rates are reported:</p> <ul style="list-style-type: none"> <li>• <b>Effective acute phase treatment:</b> the percentage of enrollees who remained on an antidepressant medication for at least 84 days (12 weeks)</li> <li>• <b>Effective continuation phase treatment:</b> the percentage of enrollees who remained on an antidepressant medication for at least 180 days (six months)</li> </ul>

Measure	Exclusions	Eligible population	Occurrence	Description of measurement screening, test, or treatment needed
<b>Follow-Up After Hospitalization for Mental Illness (FUH)</b>	<ul style="list-style-type: none"> <li>Enrollees who use hospice services or elect to use a hospice benefit any time during the measurement year</li> <li>Enrollees who die any time during the measurement year</li> </ul>	Ages 6 and older	Within seven and/or 30 days after discharge	<p>The percentage of discharges for enrollees who were hospitalized for treatment of selected mental illness or intentional self-harm diagnoses and who had a follow-up visit with a mental health provider during the measurement year. Two rates are reported:</p> <ul style="list-style-type: none"> <li>The percentage of discharges for which the enrollee received follow-up within 30 days after discharge</li> <li>The percentage of discharges for which the enrollee received follow-up within 7 days after discharge</li> </ul>
<b>Follow-Up After Emergency Department Visit for Mental Illness (FUM)</b>	<ul style="list-style-type: none"> <li>Enrollees who use hospice services or elect to use a hospice benefit any time during the measurement year</li> <li>Enrollees who die any time during the measurement year</li> </ul>	Ages 6 or older	Within seven and/or 30 days after ED visit	<p>The percentage of emergency department (ED) visits with a principal diagnosis of mental illness or intentional self-harm, who had a follow-up visit for mental illness with any practitioner. Two rates are reported:</p> <ul style="list-style-type: none"> <li>The percentage of ED visits for which the enrollee received follow-up within 30 days of the ED visit (31 total days)</li> <li>The percentage of ED visits for which the enrollee received follow-up within 7 days of the ED visit (8 total days)</li> </ul>
<b>Diagnosed Substance Use Disorders (DSU)</b>	<ul style="list-style-type: none"> <li>Enrollees who use hospice services or elect to use a hospice benefit any time during the measurement year</li> <li>Enrollees who die any time during the measurement year</li> </ul>	Ages 13 years or older	Annual	<p>The percentage of enrollees who were diagnosed with a substance use disorder during the measurement year. Four rates are reported:</p> <ul style="list-style-type: none"> <li>The percentage of enrollees diagnosed with an alcohol disorder</li> <li>The percentage of enrollees diagnosed with an opioid disorder</li> <li>The percentage of enrollees diagnosed with a disorder for other or unspecified drugs</li> <li>The percentage of enrollees diagnosed with any substance use disorder</li> </ul> <p><b>Note:</b> The measure provides information on the diagnosed prevalence of substance use disorders. Neither a higher nor lower rate indicates better performance.</p>



Measure	Exclusions	Eligible population	Occurrence	Description of measurement screening, test, or treatment needed
<b>Follow-Up After High Intensity Care for Substance Use Disorder (FUI)</b>	<ul style="list-style-type: none"> <li>Enrollees who use hospice services or elect to use a hospice benefit any time during the measurement year</li> <li>Enrollees who die any time during the measurement year</li> </ul>	Ages 13 years and older	Within seven and/or 30 days after discharge	<p>Percentage of acute inpatient hospitalizations, residential treatment, or withdrawal management visits for a diagnosis of substance use that result in a follow-up visit or service for substance use disorder during the measurement year. Two rates are reported:</p> <ul style="list-style-type: none"> <li>The percentage of visits or discharges for which the enrollee received follow-up for substance use disorder within the 30 days after the visit or discharge</li> <li>The percentage of visits or discharges for which the enrollee received follow-up for substance use disorder within the 7 days after discharge</li> </ul> <p><b>Note:</b> Follow-up visits on the same day of the visit or discharge do not meet this measure.</p>
<b>Follow-Up After Emergency Department Visit for Substance Use (FUA)</b>	<ul style="list-style-type: none"> <li>Enrollees who use hospice services or elect to use a hospice benefit any time during the measurement year</li> <li>Enrollees who die any time during the measurement year</li> </ul>	Ages 13 years and older	Within seven and/or 30 days after ED visit	<p>The percentage of emergency department (ED) visits among enrollees with a principal diagnosis of substance use disorder (SUD), or any diagnosis of drug overdose, for which there was follow-up during the measurement year. Two rates are reported:</p> <ul style="list-style-type: none"> <li>The percentage of ED visits for which the enrollee received follow-up within 30 days of the ED visit (31 total days)</li> <li>The percentage of ED visits for which the enrollee received follow-up within seven days of the ED visit (eight total days)</li> </ul> <p><b>Note:</b> Follow-up visits that occur on the same day as the ED discharge meet this measure.</p>
<b>Pharmacotherapy for Opioid Use Disorder (POD)</b>	<ul style="list-style-type: none"> <li>Enrollees who use hospice services or elect to use a hospice benefit any time during the measurement year</li> <li>Enrollees who die any time during the measurement year</li> </ul>	Ages 16 years and older	Annual	<p>The percentage of opioid use disorder (OUD) pharmacotherapy events that lasted at least 180 days with a diagnosis of OUD and a new OUD pharmacotherapy event July 1 of the year prior to the measurement year to June 30 of the measurement year.</p>
<b>Diabetes Screening for People with Schizophrenia or Bipolar Disorder Who Are Using Antipsychotic Medications (SSD)</b>	<ul style="list-style-type: none"> <li>Enrollees who use hospice services or elect to use a hospice benefit any time during the measurement year</li> <li>Enrollees who die any time during the measurement year</li> <li>Enrollees with diabetes</li> <li>Enrollees who had no antipsychotic medications dispensed during the measurement year</li> </ul>	Ages 18 to 64	Annual	<p>The percentage of enrollees with schizophrenia, schizoaffective disorder, or bipolar disorder, who were dispensed an antipsychotic medication and had a diabetes screening test (glucose test and/or HbA1c test) during the measurement year</p>



Measure	Exclusions	Eligible population	Occurrence	Description of measurement screening, test, or treatment needed
<b>Diabetes Monitoring for People with Diabetes and Schizophrenia (SMD)</b>	<ul style="list-style-type: none"> <li>• Enrollees who use hospice services or elect to use a hospice benefit any time during the measurement year</li> <li>• Enrollees who die any time during the measurement year</li> </ul>	Ages 18 to 64	Annual	Percentage of enrollees with schizophrenia or schizoaffective disorder and diabetes who had <b>both</b> an LDL-C and an HbA1c test during the measurement year
<b>Cardiovascular Monitoring for People with Cardiovascular Disease and Schizophrenia (SMC)</b>	<ul style="list-style-type: none"> <li>• Enrollees who use hospice services or elect to use a hospice benefit any time during the measurement year</li> <li>• Enrollees who die any time during the measurement year</li> </ul>	Ages 18 to 64	Annual	<p>Percentage of enrollees with schizophrenia, schizoaffective disorder <b>and</b> cardiovascular disease who had an LDL-C test during the measurement year</p> <p><b>Note:</b> Indicators of cardiovascular disease include:</p> <ul style="list-style-type: none"> <li>• Inpatient discharge for acute myocardial infarction (AMI) or coronary artery bypass grafting (CABG) during the year</li> <li>• Diagnosis of percutaneous coronary intervention (PCI) in any setting during the year</li> <li>• Diagnosis of ischemic vascular disease (IVD) during an inpatient or outpatient visit in both the current year and the prior year</li> </ul>
<b>Adherence to Antipsychotic Medications for Individuals with Schizophrenia (SAA)</b>	<ul style="list-style-type: none"> <li>• Enrollees who use hospice services or elect to use a hospice benefit any time during the measurement year</li> <li>• Enrollees who die any time during the measurement year</li> <li>• Enrollees who had a diagnosis of dementia</li> <li>• Enrollees who <i>did not</i> have at least two antipsychotic medication dispensing events.</li> <li>• Enrollees 66 to 80 years of age as of December 31 of the measurement year (all product lines) with frailty <b>and</b> advanced illness. Enrollees must meet <b>both</b> frailty and advanced illness criteria to be excluded</li> <li>• Enrollees 81 years of age and older as of December 31 of the measurement year (all product lines) with at least two indications of frailty with different dates of service during the measurement year</li> </ul>	Ages 18 years and older	Annual	The percentage of enrollees with schizophrenia or schizoaffective disorder who were dispensed and remained on the antipsychotic medication for at least 80% of their treatment period (treatment period begins on earliest prescription dispensing date for any antipsychotic medication during the measurement year)



Measure	Exclusions	Eligible population	Occurrence	Description of measurement screening, test, or treatment needed
<b>Use of Opioids from Multiple Providers (UOP)</b>	<ul style="list-style-type: none"> <li>Enrollees who use hospice services or elect to use a hospice benefit any time during the measurement year</li> <li>Enrollees who die any time during the measurement year</li> </ul>	Ages 18 years and older	Annual	<p>The percentage of enrollees receiving prescription opioids for <math>\geq 15</math> days during the measurement year who received opioids from multiple providers. Three rates are reported:</p> <ul style="list-style-type: none"> <li><b>Multiple prescribers:</b> the percentage of enrollees receiving prescriptions for opioids from four or more different prescribers during the measurement year</li> <li><b>Multiple pharmacies:</b> the percentage of enrollees receiving prescriptions for opioids from four or more different pharmacies during the measurement year</li> <li><b>Multiple prescribers and multiple pharmacies:</b> the percentage of enrollees receiving prescriptions for opioids from four or more different prescribers <b>and</b> four or more different pharmacies during the measurement year (for example, the percentage of enrollees who are numerator compliant for both the multiple prescribers and multiple pharmacies rates).</li> </ul> <p><b>Note:</b> A lower rate indicates better performance for all three rates.</p>
<b>Risk of Continued Opioid Use (COU)</b>	<ul style="list-style-type: none"> <li>Enrollees who use hospice services or elect to use a hospice benefit any time during the measurement year</li> <li>Enrollees who die any time during the measurement year</li> <li>Enrollees who met at least one of the following at any time during the 365 days prior to the IPSD through 61 days after the IPSD: <ul style="list-style-type: none"> <li>– Cancer</li> <li>– Sickle cell disease</li> </ul> </li> <li>Enrollees receiving palliative care any time during the measurement year</li> <li>Enrollees who had an encounter for palliative care any time during the measurement year</li> </ul>	Ages 18 years and older	Annual	<p>The percentage of enrollees who have a new episode of opioid use that puts them at risk for continued opioid use. November 1 of the year prior to the measurement year to October 31 of the measurement year. Two rates are reported:</p> <ul style="list-style-type: none"> <li>The percentage of enrollees with at least 15 days of prescription opioids in a 30-day period</li> <li>The percentage of enrollees with at least 31 days of prescription opioids in a 62-day period</li> </ul> <p><b>Note:</b> Lower rate indicates higher performance.</p>



Measure	Exclusions	Eligible population	Occurrence	Description of measurement screening, test, or treatment needed
<b>Appropriate Treatment for Upper Respiratory Infection (URI)</b>	<ul style="list-style-type: none"> <li>• Enrollees who use hospice services or elect to use a hospice benefit any time during the measurement year</li> <li>• Enrollees who die any time during the measurement year</li> </ul>	Ages 3 months and older	Per occurrence	The percentage of episodes for enrollees with a diagnosis of upper respiratory infection (URI) that did not result in an antibiotic dispensing event July 1 of the year prior to the measurement year to June 30 of the measurement year.
<b>Avoidance of Antibiotic Treatment for Acute Bronchitis/Bronchiolitis (AAB)</b>	<ul style="list-style-type: none"> <li>• Enrollees who use hospice services or elect to use a hospice benefit any time during the measurement year</li> <li>• Enrollees who die any time during the measurement year</li> </ul>	Ages 3 months and older	Per occurrence	The percentage of episodes for enrollees with a diagnosis of acute bronchitis/bronchiolitis that did not result in an antibiotic dispensing event July 1 of the year prior to the measurement year to June 30 of the measurement year.





Measure	Exclusions	Eligible population	Occurrence	Description of measurement screening, test, or treatment needed
Use of Imaging Studies for Low Back Pain (LBP)	<ul style="list-style-type: none"> <li>• Enrollees who use hospice services or elect to use a hospice benefit any time during the measurement year</li> <li>• Enrollees who die any time during the measurement year</li> <li>• Enrollees 66 years of age or older as of December 31 of the measurement year (all product lines) with frailty <b>and</b> advanced illness. Enrollees must meet <b>both</b> frailty and advanced illness criteria to be excluded</li> <li>• Enrollees meet any of the following criteria:               <ul style="list-style-type: none"> <li>– Cancer</li> <li>– Recent trauma</li> <li>– Intravenous drug abuse</li> <li>– Neurological impairment</li> <li>– HIV</li> <li>– Spinal infection</li> <li>– Major organ transplant</li> <li>– Prolonged use of corticosteroids</li> <li>– Osteoporosis</li> <li>– Lumbar surgery</li> <li>– Spondylopathy</li> <li>– Fragility fracture</li> <li>– Spondylopathy</li> </ul> </li> </ul>	Ages 18 to 75	Not applicable	Percentage of enrollees who had a primary diagnosis of lower back pain and <b>did not</b> have an imaging study (e.g., plain X-ray, MRI, or CT scan) within 28 days of the diagnosis January 1 to December 3 of the measurement year.





Measure	Exclusions	Eligible population	Occurrence	Description of measurement screening, test, or treatment needed
<b>Use of Opioids at High Dosage (HDO)</b>	<ul style="list-style-type: none"> <li>• Enrollees who use hospice services or elect to use a hospice benefit any time during the measurement year</li> <li>• Enrollees who die any time during the measurement year</li> <li>• Enrollees who meet the following criteria: <ul style="list-style-type: none"> <li>– Cancer</li> <li>– Sickle cell</li> </ul> </li> <li>• Enrollees receiving palliative care any time during the measurement year</li> <li>• Enrollees who had an encounter for palliative care any time during the measurement year</li> </ul>	Ages 18 years and older	Annual	<p>The percentage of enrollees who received prescription opioids at a high dosage (average morphine milligram equivalent dose [MME] <math>\geq</math> 90) for <math>\geq</math> 15 days during the measurement year.</p> <p><b>Note:</b> Lower rate indicates higher performance.</p>
<b>Adults' Access to Preventive/Ambulatory Health Services (AAP)</b>	<ul style="list-style-type: none"> <li>• Enrollees who use hospice services or elect to use a hospice benefit any time during the measurement year</li> <li>• Enrollees who die any time during the measurement year</li> </ul>	Ages 20 and older	Annual	<p>The percentage of enrollees who had an ambulatory or preventive care visit. The organization reports three separate percentages for each product line.</p> <ul style="list-style-type: none"> <li>• Medicaid and Medicare enrollees who had an ambulatory or preventive care visit during the measurement year.</li> <li>• Commercial enrollees who had an ambulatory or preventive care visit during the measurement year or the 2 years prior to the measurement year.</li> </ul>
<b>Initiation and Engagement of Substance Use Disorder Treatment (IET)</b>	<ul style="list-style-type: none"> <li>• Enrollees who use hospice services or elect to use a hospice benefit any time during the measurement year</li> <li>• Enrollees who die any time during the measurement year</li> </ul>	Ages 13 and older	Per episode	<p>The percentage of new substance use disorder (SUD) episodes that result in treatment initiation and engagement. Two rates are reported:</p> <ul style="list-style-type: none"> <li>• <b>Initiation of SUD treatment:</b> the percentage of new SUD episodes that result in treatment initiation through an inpatient SUD admission, outpatient visit, intensive outpatient encounter, partial hospitalization, telehealth visit, or medication treatment within 14 days. November 15 of the year prior to the measurement year to November 14 of the measurement year.</li> <li>• <b>Engagement of SUD treatment:</b> the percentage of new SUD episodes that have evidence of treatment engagement within 34 days of initiation</li> </ul>

Measure	Exclusions	Eligible population	Occurrence	Description of measurement screening, test, or treatment needed
<b>Prenatal and Postpartum Care (PPC)</b>	<ul style="list-style-type: none"> <li>• Enrollees who use hospice services or elect to use a hospice benefit any time during the measurement year</li> <li>• Enrollees who die any time during the measurement year</li> </ul>	Live birth	Per occurrence	<p>The percentage of deliveries of live births on or between October 8 of the year prior to the measurement year and October 7 of the measurement year. For these enrollees, the measure assesses the following facets of prenatal and postpartum care:</p> <ul style="list-style-type: none"> <li>• <b>Timeliness of prenatal care:</b> the percentage of deliveries that received a prenatal care visit in the first trimester, on or before the enrollment start date or within 42 days of enrollment in the organization</li> <li>• <b>Postpartum care:</b> the percentage of deliveries that had a postpartum visit on or between seven and 84 days after delivery</li> </ul>
<b>Use of First-Line Psychosocial Care for Children and Adolescents on Antipsychotics (APP)</b>	<ul style="list-style-type: none"> <li>• Enrollees who use hospice services or elect to use a hospice benefit any time during the measurement year</li> <li>• Enrollees who die any time during the measurement year</li> <li>• Enrollees for whom first-line antipsychotic medications may be clinically appropriate: enrollees with a diagnosis of schizophrenia, schizoaffective disorder, bipolar disorder, other psychotic disorder, autism, or other developmental disorder on at least two different dates of service during the measurement year</li> </ul>	Ages 1 to 17	Annual	<p>The percentage of enrollees who had a new prescription for an antipsychotic medication and had documentation of psychosocial care as first-line treatment January 1 through December 1 of the measurement year.</p>





Measure	Exclusions	Eligible population	Occurrence	Description of measurement screening, test, or treatment needed
<b>Well-Child Visits in the First 30 Months of Life (W30)</b>	<ul style="list-style-type: none"> <li>Enrollees who use hospice services or elect to use a hospice benefit any time during the measurement year</li> <li>Enrollees who die any time during the measurement year</li> </ul>	<p>Ages 0 to 15 months</p> <p>Ages 15 to 30 months</p>	<p>Six visits</p> <p>Two visits</p>	<p>Enrollees who had the following number of well-child visits with a PCP during the last 15 months. The following rates are reported:</p> <ul style="list-style-type: none"> <li><b>Well-child visits in the first 15 months:</b> children who turned 15 months old during the measurement year: six or more well-child visits</li> <li><b>Well-child visits for age 15 to 30 months:</b> children who turned 30 months old during the measurement year: two or more well-child visits</li> </ul>
<b>Child and Adolescent Well-Care Visits (WCV)</b>	<ul style="list-style-type: none"> <li>Enrollees who use hospice services or elect to use a hospice benefit any time during the measurement year</li> <li>Enrollees who die any time during the measurement year</li> </ul>	Ages 3 to 21	Annual	Enrollees who had at least one comprehensive well-care visit with a PCP or an OB/GYN practitioner during the measurement year





Measure	Exclusions	Eligible population	Occurrence	Description of measurement screening, test, or treatment needed
<b>Antibiotic Utilization for Respiratory Conditions (AXR)</b>	<ul style="list-style-type: none"> <li>Enrollees who use hospice services or elect to use a hospice benefit any time during the measurement year</li> </ul>	Ages 3 months and older	Per episode	The percentage of episodes for enrollees with a diagnosis of a respiratory condition that resulted in an antibiotic dispensing event July 1 of the year prior to the measurement year to June 30 of the measurement year
<b>Plan All-Cause Readmissions (PCR)</b>	<ul style="list-style-type: none"> <li>Enrollees who use hospice services or elect to use a hospice benefit any time during the measurement year</li> </ul>	Ages 18 to 64 years	Per occurrence	The number of acute inpatient and observation stays during the measurement year that were followed by an unplanned acute readmission for any diagnosis within 30 days and the predicted probability of an acute readmission.
<b>Utilization of the PHQ-9 to Monitor Depression Symptoms for Adolescents and Adults (DMS-E)</b>	<ul style="list-style-type: none"> <li>Enrollees with any of the following at any time during enrollee's history through the end measurement period: <ul style="list-style-type: none"> <li>– Bipolar disorder</li> <li>– Personality disorder</li> <li>– Psychotic disorder</li> <li>– Pervasive developmental disorder</li> </ul> </li> <li>Enrollees who use hospice services or elect to use a hospice benefit any time during the measurement period</li> <li>Enrollees who die any time during the measurement year</li> </ul>	Ages 12 years and older	Per encounter	This measure looks at the percentage of enrollees 12 years of age and older with a diagnosis of major depression or dysthymia who had an outpatient encounter with a <i>Enrollee Health Questionnaire-9 (PHQ-9)</i> score present in their record in the same assessment period as the encounter



Measure	Exclusions	Eligible population	Occurrence	Description of measurement screening, test, or treatment needed
<b>Childhood Immunization Status (CIS-E)</b>	<ul style="list-style-type: none"> <li>• Enrollees who use hospice services or elect to use a hospice benefit any time during the measurement year</li> <li>• Enrollees who die any time during the measurement year</li> <li>• Enrollees who had a contraindication to a childhood vaccine on or before their second birthday</li> </ul>	Ages 0 to 2	Multiple doses	<p>The percentage of enrollees who had appropriate doses of the following vaccines on or before their second birthday:</p> <ul style="list-style-type: none"> <li>• Four diphtheria, tetanus, and acellular pertussis (DTaP)</li> <li>• Three polio (IPV)</li> <li>• One measles, mumps, and rubella (MMR) (can only be given on or between first and second birthday to close the gap)</li> <li>• Three haemophilus influenza type B (HiB)</li> <li>• Three hepatitis B (hepB) (One of the three vaccinations can be a newborn hepatitis B vaccination during the eight-day period that begins on the date of birth and ends seven days after the date of birth)</li> <li>• One chicken pox (VZV) (can only be given on or between first and second birthday to close the gap)</li> <li>• Four pneumococcal conjugate (PCV)</li> <li>• One hepatitis A (HepA) (can only be given on or between first and second birthday to close the gap)</li> <li>• Two two-dose rotavirus (RV) or 3 three-dose rotavirus (RV) (Or one two-dose and two three-dose RV combination)</li> <li>• Two influenza (flu) (influenza cannot be given until infant is 6 months of age — one of the two vaccinations for influenza can be an LAIV administered on the child's second birthday)</li> </ul>
<b>Immunizations for Adolescents (IMA-E)</b>	<ul style="list-style-type: none"> <li>• Enrollees who use hospice services or elect to use a hospice benefit any time during the measurement year</li> <li>• Enrollees who die any time during the measurement year</li> </ul>	Ages 13	Multiple doses	<p>The percentage of enrollees who had one dose of meningococcal vaccine, one tetanus, diphtheria toxoids and acellular pertussis (Tdap) vaccine, and have completed the human papillomavirus (HPV) vaccine series by their 13th birthday.</p> <ul style="list-style-type: none"> <li>• Meningococcal vaccine between 11th and 13th birthday</li> <li>• Tdap vaccine between 10th and 13th birthday</li> <li>• HPV vaccine between 9th and 13th birthday</li> </ul>



Measure	Exclusions	Eligible population	Occurrence	Description of measurement screening, test, or treatment needed
<b>Breast Cancer Screening (BCS-E)</b>	<ul style="list-style-type: none"> <li>• Enrollees who use hospice services or elect to use a hospice benefit any time during the measurement year</li> <li>• Enrollees who die any time during the measurement year</li> <li>• Enrollees who had a bilateral mastectomy or both right and left unilateral mastectomies any time during the enrollee's history through the end of the measurement period</li> <li>• Enrollees who had gender-affirming chest surgery with a diagnosis of gender dysphoria any time during the enrollee's history through the end of the measurement period</li> <li>• Enrollees 66 years of age and older as of December 31 of the measurement year (all product lines) with frailty <b>and</b> advanced illness. Enrollees must meet <b>both</b> frailty and advanced illness criteria to be excluded</li> <li>• Enrollees who die any time during the measurement year</li> <li>• Enrollees receiving palliative care any time during the measurement year</li> <li>• Enrollees who had an encounter for palliative anytime during the measurement year</li> </ul>	Ages 50 to 74	Every two years	The percentage of enrollees who were recommended for routine breast cancer screening and had a mammogram to screen for breast cancer from October 1, two years prior to the measurement period through the end of the measurement period





Measure	Exclusions	Eligible population	Occurrence	Description of measurement screening, test, or treatment needed
<b>Cervical Cancer Screening (CCS-E)</b>	<ul style="list-style-type: none"> <li>• Enrollees who use hospice services or elect to use a hospice benefit any time during the measurement year</li> <li>• Enrollees who die any time during the measurement year</li> <li>• Hysterectomy with no residual cervix any time during the enrollee's history through December 31 of the measurement year</li> <li>• Cervical agenesis or acquired absence of cervix any time during the enrollee's history through the end of the measurement period</li> <li>• Enrollees receiving palliative care any time during the measurement period</li> <li>• Enrollees who had an encounter for palliative care any time during the measurement period</li> <li>• Enrollees with Sex assigned at birth of male at any time during the enrollee's history</li> </ul>	Ages 21 to 64	Varies by age	<p>The percentage of enrollees who were recommended for routine cervical cancer screening and were screened for cervical cancer using any of the following criteria:</p> <ul style="list-style-type: none"> <li>• Enrollees 21 to 64 years of age who were recommended for routine cervical cancer screening and had cervical cytology performed within the last three years</li> <li>• Enrollees 30 to 64 years of age who were recommended for routine cervical cancer screening and had cervical high-risk human papillomavirus (hrHPV) testing performed within the last five years</li> <li>• Enrollees 30 to 64 years of age who were recommended for routine cervical cancer screening and had cervical cytology/high-risk human papillomavirus (hrHPV) cotesting within the last five years</li> </ul>

Measure	Exclusions	Eligible population	Occurrence	Description of measurement screening, test, or treatment needed
Colorectal Cancer Screening (COL-E)	<ul style="list-style-type: none"> <li>• Enrollees who use hospice services or elect to use a hospice benefit any time during the measurement year</li> <li>• Enrollees who die any time during the measurement year</li> <li>• Enrollees 66 years of age and older as of December 31 of the measurement year (all product lines) with frailty <b>and</b> advanced illness. Enrollees must meet <b>both</b> frailty and advanced illness criteria to be excluded</li> <li>• Enrollees receiving palliative care any time during the measurement year</li> <li>• Enrollees who had an encounter for palliative care any time during the measurement year</li> <li>• Enrollees who had colorectal cancer any time during the enrollee's history through December 31 of the measurement year</li> <li>• Enrollees who had a total colectomy any time during the enrollee's history through December 31 of the measurement period</li> </ul>	Ages 45 to 75	Dependent on screening type	<p>The percentage of enrollees who had appropriate screening for colorectal cancer. Screenings are defined by one of the following:</p> <ul style="list-style-type: none"> <li>• Fecal occult blood test (FOBT) during the measurement period</li> <li>• Flexible sigmoidoscopy during the measurement period or the four years prior to the measurement period</li> <li>• Colonoscopy during the measurement year or the nine years prior to the measurement period</li> <li>• CT colonography during the measurement period or the four years prior to the measurement period.</li> <li>• Stool DNA (sDNA) with fecal immunochemical test (FIT) test during the measurement period or the two years prior to the measurement period</li> </ul>



Measure	Exclusions	Eligible population	Occurrence	Description of measurement screening, test, or treatment needed
<b>Follow-Up Care for Children Prescribed ADHD Medication (ADD-E)</b>	<ul style="list-style-type: none"> <li>• Enrollees who use hospice services or elect to use a hospice benefit any time during the measurement year</li> <li>• Enrollees who die any time during the measurement year</li> <li>• Enrollees with a diagnosis of narcolepsy any time during the enrollee's history through the end of the measurement period</li> </ul>	Ages 6 to 12	Varies by phase	<p>The percentage of children newly prescribed attention-deficit/hyperactivity disorder (ADHD) medication who had at least three follow-up care visits within a 10-month period, one of which was within 30 days of when the first ADHD medication was dispensed during the measurement year. Two rates are reported:</p> <ul style="list-style-type: none"> <li>• <b>Initiation phase:</b> the percentage of enrollees 6 to 12 years of age with a prescription dispensed for ADHD medication, who had one follow-up visit with a practitioner with prescribing authority during the 30-day initiation phase</li> <li>• <b>Continuation and maintenance (C&amp;M) phase:</b> the percentage of enrollees 6 to 12 years of age with a prescription dispensed for ADHD medication, who remained on the medication for at least 210 days and who, in addition to the visit in the Initiation Phase, had at least two follow-up visits with a practitioner within 270 days (nine months) after the initiation phase ended.</li> </ul>
<b>Metabolic Monitoring for Children and Adolescents on Antipsychotics (APM-E)</b>	<ul style="list-style-type: none"> <li>• Enrollees who use hospice services or elect to use a hospice benefit any time during the measurement year</li> <li>• Enrollees who die any time during the measurement year</li> </ul>	Ages 1 to 17	Annual	<p>Enrollees who had two or more antipsychotic prescriptions and had metabolic testing during the measurement year. Three rates are reported:</p> <ul style="list-style-type: none"> <li>• The percentage of children and adolescents on antipsychotics who received blood glucose testing (blood glucose or HbA1c)</li> <li>• The percentage of children and adolescents on antipsychotics who received cholesterol testing (LDL-C or cholesterol)</li> <li>• The percentage of children and adolescents on antipsychotics who received <b>both</b> blood glucose and cholesterol testing.</li> </ul>
<b>Depression Screening and Follow-up for Adolescents and Adults (DSF-E)</b>	<ul style="list-style-type: none"> <li>• Enrollees who use hospice services or elect to use a hospice benefit any time during the measurement year</li> <li>• Enrollees who die any time during the measurement year</li> <li>• Enrollees with a history of bipolar any time during the enrollee's history through the end of the year prior to the measurement period</li> <li>• Enrollees with depression that starts during the year prior to the measurement period</li> </ul>	Ages 12 and older	Per episode	<p>The percentage of enrollees who were screened for clinical depression using a standardized instrument and, if screened positive, received follow-up care during the measurement year:</p> <ul style="list-style-type: none"> <li>• <b>Depression screening:</b> The percentage of enrollees who were screened for clinical depression using a standardized instrument.</li> <li>• <b>Follow-up on positive screen:</b> The percentage of enrollees who received follow-up care within 30 days of a positive depression screen finding.</li> </ul>



Measure	Exclusions	Eligible population	Occurrence	Description of measurement screening, test, or treatment needed
<b>Unhealthy Alcohol Use Screening and Follow-Up (ASF-E)</b>	<ul style="list-style-type: none"> <li>• Enrollees who use hospice services or elect to use a hospice benefit any time during the measurement year</li> <li>• Enrollees who die any time during the measurement year</li> <li>• Enrollees with alcohol use disorder that starts during the year prior to the measurement period</li> <li>• Enrollees with history of dementia any time during the enrollee's history through the end of the measurement period</li> </ul>	Ages 18 years and older	Per episode	<p>The percentage of enrollees who were screened for unhealthy alcohol use using a standardized instrument and, if screened positive, received appropriate follow-up care during the measurement year.</p> <ul style="list-style-type: none"> <li>• <b>Unhealthy alcohol use screening:</b> The percentage of enrollees who had a systematic screening for unhealthy alcohol use</li> <li>• <b>Follow-up care on positive screen:</b> The percentage of enrollees receiving brief counseling or other follow-up care within 60 days (two months) of screening positive for unhealthy alcohol use</li> </ul>



Measure	Exclusions	Eligible population	Occurrence	Description of measurement screening, test, or treatment needed
<b>Depression Remission or Response for Adolescents and Adults (DRR-E)</b>	<ul style="list-style-type: none"> <li>• Enrollees who use hospice services or elect to use a hospice benefit any time during the measurement year</li> <li>• Enrollees who die any time during the measurement year</li> <li>• Enrollees with any of the following any time during the enrollee's history through the end of the measurement period: <ul style="list-style-type: none"> <li>– Bipolar disorder</li> <li>– Personality disorder</li> <li>– Psychotic disorder</li> <li>– Pervasive developmental disorder</li> </ul> </li> </ul>	Ages 12 and older	Per episode	<p>The percentage of enrollees with a diagnosis of depression and an elevated PHQ-9 score, who had evidence of response or remission within 120-240 days (4-8 months) of the elevated score:</p> <ul style="list-style-type: none"> <li>• <b>Follow-Up PHQ-9:</b> The percentage of enrollees who have a follow-up PHQ-9 score documented within 120-240 days (four to eight months) after the initial elevated PHQ-9 score</li> <li>• <b>Depression remission:</b> The percentage of enrollees who achieved remission within 120-240 days (four to eight months) after the initial elevated PHQ-9 score</li> <li>• <b>Depression response:</b> The percentage of enrollees who showed response within 120-240 days (four to eight months) after the initial elevated PHQ-9 score</li> </ul>
<b>Adult Immunization Status (AIS-E)</b>	<ul style="list-style-type: none"> <li>• Enrollees who use hospice services or elect to use a hospice benefit any time during the measurement year</li> <li>• Enrollees who die any time during the measurement year</li> </ul>	Ages 19 and older	Annual	The percentage of enrollees who are up to date on recommended routine vaccines for influenza, tetanus and diphtheria (Td) or tetanus, diphtheria and acellular pertussis (Tdap), zoster and pneumococcal during the measurement year.
<b>Prenatal Immunization Status (PRS-E)</b>	<ul style="list-style-type: none"> <li>• Enrollees who use hospice services or elect to use a hospice benefit any time during the measurement year.</li> <li>• Enrollees who die any time during the measurement year.</li> <li>• Deliveries that occurred at less than 37 weeks gestation</li> </ul>	N/A	Annual	The percentage of deliveries in the measurement period in which enrollees had received influenza and tetanus, diphtheria toxoids and acellular pertussis (Tdap) vaccinations during the measurement year.
<b>Prenatal Depression Screening and Follow-up (PND-E)</b>	<ul style="list-style-type: none"> <li>• Enrollees who use hospice services or elect to use a hospice benefit any time during the measurement year</li> <li>• Enrollees who die any time during the measurement year</li> <li>• Deliveries that occurred at less than 37 weeks gestation</li> </ul>	N/A	Annual	<p>The percentage of deliveries in which enrollees were screened for clinical depression while pregnant and, if screened positive, received follow-up care:</p> <ul style="list-style-type: none"> <li>• <b>Depression screening:</b> The percentage of deliveries in which enrollees were screened for clinical depression during pregnancy using a standardized instrument</li> <li>• <b>Follow-up on positive screen:</b> The percentage of deliveries in which enrollees received follow-up care within 30 days of a positive depression screen finding</li> </ul>



Measure	Exclusions	Eligible population	Occurrence	Description of measurement screening, test, or treatment needed
<b>Postpartum Depression Screening and Follow-up (PDS-E)</b>	<ul style="list-style-type: none"> <li>• Enrollees who use hospice services or elect to use a hospice benefit any time during the measurement year</li> <li>• Enrollees who die any time during the measurement year</li> </ul>	N/A	Annual	<p>The percentage of deliveries in which enrollees were screened for clinical depression during the postpartum period, and if screened positive, received follow-up care during the measurement year:</p> <ul style="list-style-type: none"> <li>• <b>Depression screening:</b> The percentage of deliveries in which enrollees were screened for clinical depression using a standardized instrument during the postpartum period</li> <li>• <b>Follow-up on positive screen:</b> The percentage of deliveries in which enrollees received follow-up care within 30 days of a positive depression screen finding</li> </ul>
<b>Social Need Screening and Intervention (SNS-E)</b>	<ul style="list-style-type: none"> <li>• Enrollees who use hospice services or elect to use a hospice benefit any time during the measurement year</li> <li>• Enrollees who die any time during the measurement year</li> </ul>	Any age	Annual	<p>The percentage of enrollees who were screened, using prespecified instruments, at least once during the measurement period for unmet food, housing, and transportation needs, and received a corresponding intervention if they screened positive:</p> <ul style="list-style-type: none"> <li>• <b>Food screening:</b> The percentage of enrollees who were screened for food insecurity.</li> <li>• <b>Food intervention:</b> The percentage of enrollees who received a corresponding intervention within 30 days (one month) of screening positive for food insecurity.</li> <li>• <b>Housing screening:</b> The percentage of enrollees who were screened for housing instability, homelessness, or housing inadequacy.</li> <li>• <b>Housing intervention:</b> The percentage of enrollees who received a corresponding intervention within 30 days (one month) of screening positive for housing instability, homelessness, or housing inadequacy.</li> <li>• <b>Transportation screening:</b> The percentage of enrollees who were screened for transportation insecurity.</li> <li>• <b>Transportation intervention:</b> The percentage of enrollees who received a corresponding intervention within 30 days (one month) of screening positive for transportation insecurity.</li> </ul>





Measure	Exclusions	Eligible population	Occurrence	Description of measurement screening, test, or treatment needed
<b>Medical Assistance with Smoking and Tobacco Use Cessation (MSC) — CAHPS®</b>	NA	Ages 18 and older	Annual	<p>The following components of this measure assess different facets of providing medical assistance with smoking and tobacco use cessation:</p> <ul style="list-style-type: none"> <li>• <b>Advising smokers and tobacco users to quit:</b> a rolling average represents the percentage of enrollees 18 years of age and older who were current smokers or tobacco users and who received advice to quit during the measurement year</li> <li>• <b>Discussing cessation medications:</b> a rolling average represents the percentage of enrollees 18 years of age and older who were current smokers or tobacco users and who discussed or were recommended cessation medications during the measurement year</li> <li>• <b>Discussing cessation strategies:</b> a rolling average represents the percentage of enrollees 18 years of age and older who were current smokers or tobacco users and who discussed or were provided cessation methods or strategies during the measurement year</li> </ul>
<b>Health Plan Survey 5.1H, Adult Version (CPA) — CAHPS</b>	N/A	Enrollees who have been with the plan through the year	Annual	<p>Five composite scores summarize responses in key areas:</p> <ol style="list-style-type: none"> <li>1. Claims processing (commercial only)</li> <li>2. Customer service</li> <li>3. Getting care quickly</li> <li>4. Getting needed care</li> <li>5. How well doctors communicate</li> </ol> <p>Item-specific question summary rates are reported for the rating questions and each composite question. Question summary rates are also reported individually for one item summarizing the following concept:</p> <ol style="list-style-type: none"> <li>1. Coordination of care</li> </ol>



Measure	Exclusions	Eligible population	Occurrence	Description of measurement screening, test, or treatment needed
Health Plan Survey 5.1H, Child Version (CPC) — CAHPS	N/A	Enrollees who have been with the plan through the year	Annual	<p>This measure provides information on parents' experience with their child's Medicaid organization. Results summarize enrollee experiences through ratings, composites, and individual question summary rates.</p> <p>Four global rating questions reflect overall satisfaction:</p> <ol style="list-style-type: none"> <li>1. Rating of All health care</li> <li>2. Rating of health plan</li> <li>3. Rating of personal doctor</li> <li>4. Rating of specialist seen most often</li> </ol> <p>Four composite scores summarize responses in key areas:</p> <ol style="list-style-type: none"> <li>1. Customer service</li> <li>2. Getting care quickly</li> <li>3. Getting needed care</li> <li>4. How well doctors communicate.</li> </ol> <p>Item-specific question summary rates are reported for the rating questions and each composite question. Question summary rates are also reported individually for one item summarizing the following concept:</p> <ol style="list-style-type: none"> <li>1. Coordination of care</li> </ol>
Children With Chronic Conditions (CCC) — CAHPS	N/A	Enrollees who have been with the plan through the year	Annual	<p>This measure provides information on parents' experience with their child's Medicaid organization for the population of children with chronic conditions.</p> <p>Three composites summarize satisfaction with basic components of care essential for successful treatment, management, and support of children with chronic conditions:</p> <ol style="list-style-type: none"> <li>1. Access to specialized services</li> <li>2. Family centered care: personal doctor who knows child</li> <li>3. Coordination of care for children with chronic conditions</li> </ol> <p>Item-specific question summary rates are reported for each composite question. Question summary rates are also reported individually for two items summarizing the following concepts:</p> <ol style="list-style-type: none"> <li>1. Access to prescription medicines</li> <li>2. Family centered care: getting needed information</li> </ol>



Measure	Exclusions	Eligible population	Occurrence	Description of measurement screening, test, or treatment needed
Early and Periodic Screening, Diagnosis and Treatment (EPSDT) program	N/A	Ages 0 to 20	Multiple	<p>Screening must include:</p> <ul style="list-style-type: none"> <li>• Comprehensive health development history (inclusive <b>both</b> physical and mental health)</li> <li>• Comprehensive unclothed physical exam or appropriately draped</li> <li>• Appropriate immunizations</li> <li>• Laboratory tests</li> <li>• Lead toxicity screening</li> <li>• Health education including anticipatory guidance</li> <li>• Vision services</li> <li>• Dental services</li> <li>• Hearing services</li> <li>• Other necessary health care — diagnostic services and treatment to correct or ameliorate defects, physical and mental illnesses, and conditions discovered by the screening services</li> </ul>





Learn more about Amerigroup District of  
Columbia, Inc. programs

[providers.amerigroup.com/DC](https://providers.amerigroup.com/DC)



District of Columbia