

Provider Pathways

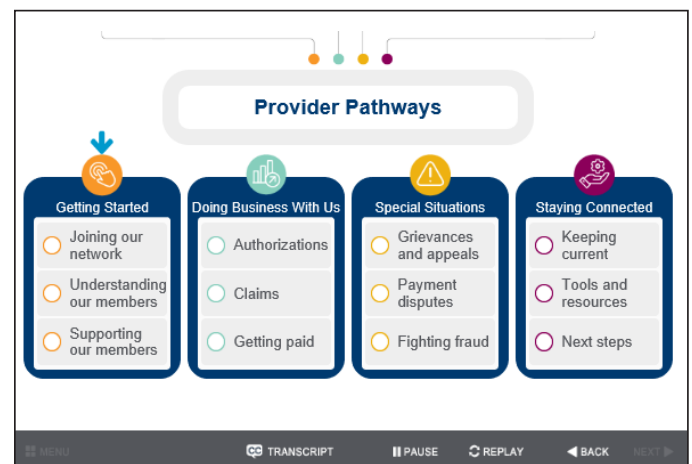
Doing business with Amerigroup District of Columbia, Inc. orientation is here!

At Amerigroup, we value you as a care provider in our network. We are always looking to improve our training methodology. That's why we've redesigned one of the ways we share important information about our tools and resources to make it more useful for you.

Provider Pathways is a 24/7 digital resource that gives a foundation on doing business with Amerigroup. This self-paced offering provides Amerigroup with a new approach to an easy, on-demand option for sharing information on our most frequently used provider tools and resources. In addition, Provider Pathways — Doing Business with Amerigroup eLearning gives you flexibility for scheduling training for yourself and your staff.

You're in control of your training experience.

When using Provider Pathways, you will select your training path. Whether you want to learn more about authorizations, claims, or another topic, you will choose your path and your pace.



Provider Pathways includes information on most of our frequently used provider tools and resources:

- Joining our network
- Signing up for Availity Essentials
- Enrolling in electronic fund transfer (EFT) and electronic remittance advice (ERA)
- Checking enrollee eligibility and claim status
- Authorizations and so much more

Provider Pathways

Welcome Student

Before you begin

- Adjust your sound to a comfortable level. You may need to click the speaker to check it.
- Click **NEXT** on the lower right corner to begin.
- If NEXT is not visible:
 - Click the maximize button at the top right to expand.
 - Hold down the **Ctrl** key and press the **F5** key to reduce.

If needed

- Click to learn about course navigation features and tips.
- Click **TRANSCRIPT** to display the transcript.

Screen ID: landing Click the arrow to continue

TRANSCRIPT NEXT

The modules have instructor voiceover and transcripts to take you through each lesson.

You can pause, replay, or go back whenever you need. Provider Pathways tracks your progress in case you leave and come back later.

Welcome

About this course
This training will orient you to our procedures and requirements.

Details can be found:

- In your provider manual
- [On the provider website](#)
- By calling Provider Experience or your local representative

The modules are designed to be informative, easy to navigate, and can be retaken anytime if you need a quick refresher on one or more topics.

Access the training.

Provider Pathways is available at <https://provider.amerigroup.com/dc-provider/home> under **Resources > Training Academy > Training Resources**.

If you have questions about this new provider resource, contact your Health Care Networks team.

Learn more about Amerigroup programs
<https://provider.amerigroup.com/DC>



District of Columbia