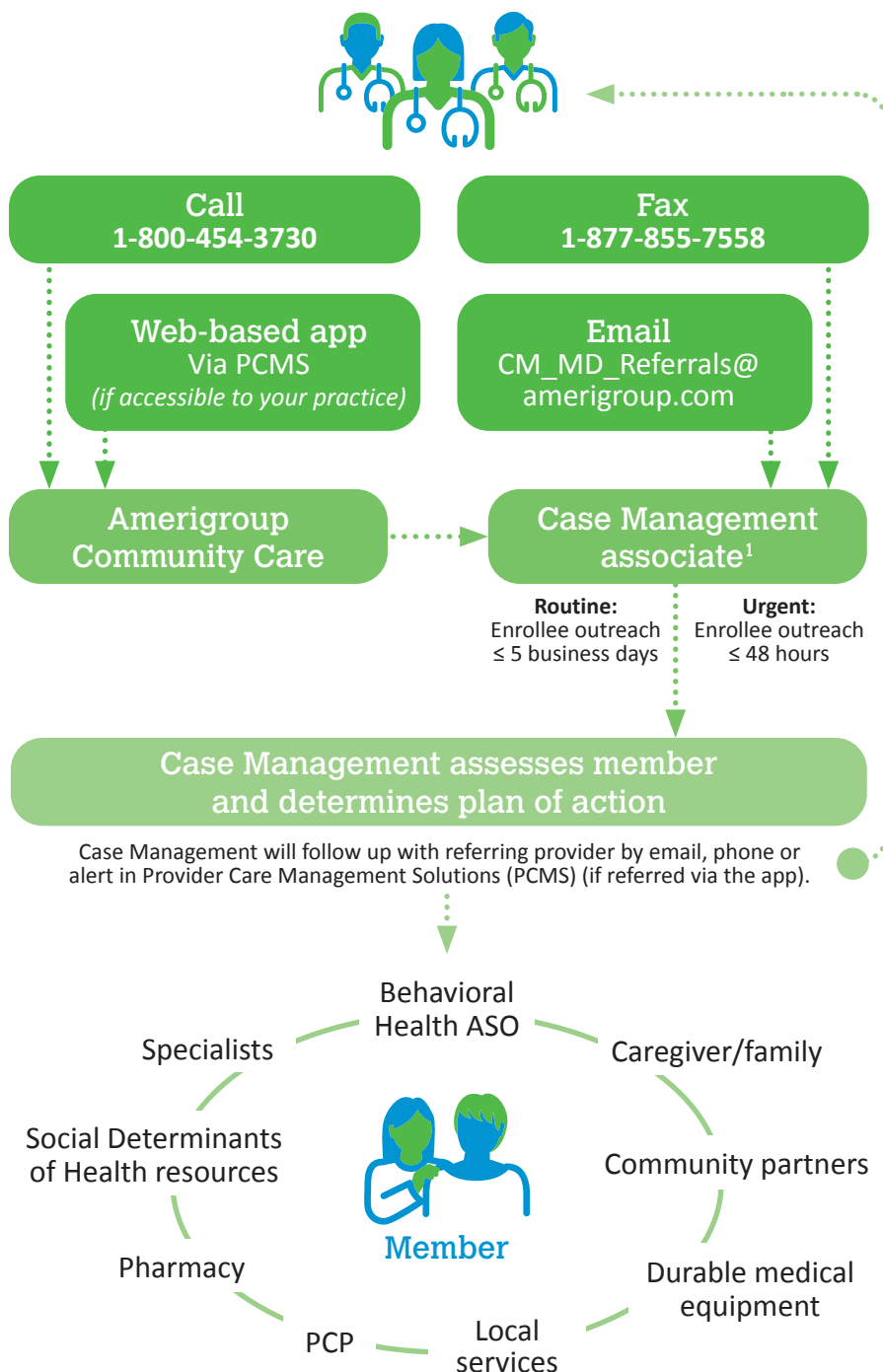


# Amerigroup Community Care Case Management Referrals

## How can PCPs refer?



## We can work together:



- 1** Refer members who may benefit from case management to us.
- 2** Our case managers may call you for information, clarification or to coordinate care for a member.
- 3** **Help us prevent readmissions!** Members are more likely to avoid readmission if seen by a PCP within seven days of discharge. We ask for your support in accommodating these urgent requests.



<sup>1</sup> Face-to-face case management is delivered through delegated partner The Coordinating Center.\*

\* The Coordinating Center is an independent company providing face-to-face case management on behalf of Amerigroup Community Care.